

# LAIR-2 (E-19): sc-67601

## BACKGROUND

Leukocyte-associated immunoglobulin-like receptor 2 (LAIR-2), also called CD306 antigen, is a secreted 152 amino acid member of the immunoglobulin superfamily. LAIR-2 was identified by its similarity to LAIR-1. It may help modulate mucosal tolerance established by the interaction of LAIR-1 with Ep-CAM. Two isoforms have been characterized for this protein. Isoform 1, also called LAIR-2a, is the full length protein. Isoform 2, also called LAIR-2b, is missing the amino acid sequence from 122 and 138.

## REFERENCES

1. Meyaard, L., van der Vuurst de Vries, A.R., de Ruiter, T., Lanier, L.L., Phillips, J.H. and Clevers, H. 2001. The epithelial cellular adhesion molecule (Ep-CAM) is a ligand for the leukocyte-associated immunoglobulin-like receptor (LAIR). *J. Exp. Med.* 194: 107-112.
2. Xie, X., Ouyang, W.M., Xue, J.N., Zhang, X.H., Liu, F., Zhuang, R. and Jin, B.Q. 2004. Cloning, prokaryotic expression of LAIR and identification of their immunological reactivities. *Xi Bao Yu Fen Zi Mian Yi Xue Za Zhi* 19: 118-120.
3. Xu, X.G., Wang, C.Y., Xie, X., Xue, J.N., Ouyang, W.M., Jian, J.L. and Jin, B.Q. 2005. Identification of cell lines expressing the putative ligand(s) for LAIR-1(CD305) and LAIR-2(CD306). *Xi Bao Yu Fen Zi Mian Yi Xue Za Zhi* 21: 553-556, 560.
4. Lebbink, R.J., van den Berg, M.C., de Ruiter, T., Raynal, N., van Roon, J.A., Lenting, P.J., Jin, B. and Meyaard, L. 2008. The soluble leukocyte-associated Ig-like receptor (LAIR)-2 antagonizes the collagen/LAIR-1 inhibitory immune interaction. *J. Immunol.* 180: 1662-1669.
5. Lenting, P.J., Westerlaken, G.H., Denis, C.V., Akkerman, J.W. and Meyaard, L. 2010. Efficient inhibition of collagen-induced platelet activation and adhesion by LAIR-2, a soluble Ig-like receptor family member. *PLoS ONE* 5: e12174.

## CHROMOSOMAL LOCATION

Genetic locus: LAIR2 (human) mapping to 19q13.42.

## SOURCE

LAIR-2 (E-19) is an affinity purified goat polyclonal antibody raised against a peptide mapping within an internal region of LAIR-2 of human origin.

## PRODUCT

Each vial contains 200 µg IgG in 1.0 ml of PBS with < 0.1% sodium azide and 0.1% gelatin.

Blocking peptide available for competition studies, sc-67601 P, (100 µg peptide in 0.5 ml PBS containing < 0.1% sodium azide and 0.2% BSA).

## STORAGE

Store at 4° C, **\*\*DO NOT FREEZE\*\***. Stable for one year from the date of shipment. Non-hazardous. No MSDS required.

## APPLICATIONS

LAIR-2 (E-19) is recommended for detection of LAIR-2 of human origin by Western Blotting (starting dilution 1:200, dilution range 1:100-1:1000), immunofluorescence (starting dilution 1:50, dilution range 1:50-1:500) and solid phase ELISA (starting dilution 1:30, dilution range 1:30-1:3000).

Suitable for use as control antibody for LAIR-2 siRNA (h): sc-62538, LAIR-2 shRNA Plasmid (h): sc-62538-SH and LAIR-2 shRNA (h) Lentiviral Particles: sc-62538-V.

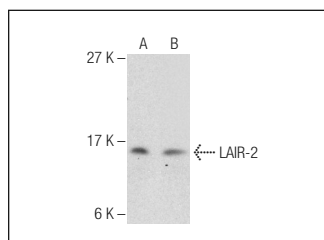
Molecular Weight of LAIR-2: 16 kDa.

Positive Controls: Jurkat whole cell lysate: sc-2204 or Raji whole cell lysate.

## RECOMMENDED SECONDARY REAGENTS

To ensure optimal results, the following support (secondary) reagents are recommended: 1) Western Blotting: use donkey anti-goat IgG-HRP: sc-2020 (dilution range: 1:2000-1:100,000) or Cruz Marker™ compatible donkey anti-goat IgG-HRP: sc-2033 (dilution range: 1:2000-1:5000), Cruz Marker™ Molecular Weight Standards: sc-2035, TBS Blotto A Blocking Reagent: sc-2333 and Western Blotting Luminol Reagent: sc-2048. 2) Immunofluorescence: use donkey anti-goat IgG-FITC: sc-2024 (dilution range: 1:100-1:400) or donkey anti-goat IgG-TR: sc-2783 (dilution range: 1:100-1:400) with UltraCruz™ Mounting Medium: sc-24941.

## DATA



LAIR-2 (E-19): sc-67601. Western blot analysis of LAIR-2 expression in Jurkat (A) and Raji (B) whole cell lysates.

## RESEARCH USE

For research use only, not for use in diagnostic procedures.

## PROTOCOLS

See our web site at [www.scbt.com](http://www.scbt.com) or our catalog for detailed protocols and support products.