

IL-22R α 2 (K-18): sc-67635

BACKGROUND

IL-22R α 2 (interleukin-22 receptor α 2 chain), also known as IL-22 binding protein (IL-22BP), cytokine receptor family class II member 10 (CRF2-10) or CRF2-soluble 1 (CRF2-S1), is a soluble, non-signaling single chain receptor for IL-22. It is highly expressed in intestine and lymph nodes and is also found in spleen, kidney and liver. IL-22R α 2 has a cytokine-binding domain that contains two FnIII domains. Its affinity for IL-22 is four- to ten-fold higher than that of the membrane-bound IL-22 receptor, however it has a dissociation rate up to 20 times lower. By binding to IL-22, IL-22R α 2 prevents the binding to the IL-22 membrane-bound receptor and therefore inhibits IL-22 signaling. This suggests that IL-22R α 2 may be important in regulating inflammatory responses. In addition, IL-22R α 2 can be induced by lipopolysaccharide (LPS).

REFERENCES

- Xu, W., et al. 2001. A soluble class II cytokine receptor, IL-22R α 2, is a naturally occurring IL-22 antagonist. *Proc. Natl. Acad. Sci. USA* 98: 9511-9516.
- Dumoutier, L., et al. 2001. Cloning and characterization of IL-22 binding protein, a natural antagonist of IL-10-related T cell-derived inducible factor/IL-22. *J. Immunol.* 166: 7090-7095.
- Kotenko, S.V., et al. 2001. Identification, cloning, and characterization of a novel soluble receptor that binds IL-22 and neutralizes its activity. *J. Immunol.* 166: 7096-7103.
- Wei, C.C., et al. 2003. Cloning and characterization of mouse IL-22 binding protein. *Genes Immun.* 4: 204-211.
- Weiss, B., et al. 2004. Cloning of murine IL-22 receptor α 2 and comparison with its human counterpart. *Genes Immun.* 5: 330-336.
- Wolk, K., et al. 2005. Is there an interaction between interleukin-10 and interleukin-22? *Genes Immun.* 6: 8-18.
- Otkjaer, K., et al. 2005. The dynamics of gene expression of interleukin-19 and interleukin-20 and their receptors in psoriasis. *Br. J. Dermatol.* 153: 911-918.
- Wolk, K., et al. 2007. IL-22 induces lipopolysaccharide-binding protein in hepatocytes: a potential systemic role of IL-22 in Crohn's disease. *J. Immunol.* 178: 5973-5981.
- Weber, G.F., et al. 2007. Inhibition of interleukin-22 attenuates bacterial load and organ failure during acute polymicrobial sepsis. *Infect. Immun.* 75: 1690-1697.

CHROMOSOMAL LOCATION

Genetic locus: Il22ra2 (mouse) mapping to 10 A3.

SOURCE

IL-22R α 2 (K-18) is an affinity purified goat polyclonal antibody raised against a peptide mapping near the C-terminus of IL-22R α 2 of mouse origin.

STORAGE

Store at 4° C, ****DO NOT FREEZE****. Stable for one year from the date of shipment. Non-hazardous. No MSDS required.

PRODUCT

Each vial contains 200 μ g IgG in 1.0 ml of PBS with < 0.1% sodium azide and 0.1% gelatin.

Blocking peptide available for competition studies, sc-67635 P, (100 μ g peptide in 0.5 ml PBS containing < 0.1% sodium azide and 0.2% BSA).

APPLICATIONS

IL-22R α 2 (K-18) is recommended for detection of Interleukin-22 receptor α 2 chain precursor of mouse and rat origin by Western Blotting (starting dilution 1:200, dilution range 1:100-1:1000), immunoprecipitation [1-2 μ g per 100-500 μ g of total protein (1 ml of cell lysate)], immunofluorescence (starting dilution 1:50, dilution range 1:50-1:500) and solid phase ELISA (starting dilution 1:30, dilution range 1:30-1:3000).

Suitable for use as control antibody for IL-22R α 2 siRNA (m): sc-62496, IL-22R α 2 shRNA Plasmid (m): sc-62496-SH and IL-22R α 2 shRNA (m) Lentiviral Particles: sc-62496-V.

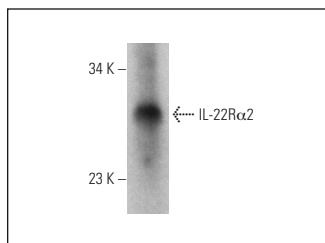
Molecular Weight of IL-22R α 2: 27 kDa.

Positive Controls: mouse heart extract: sc-2254.

RECOMMENDED SECONDARY REAGENTS

To ensure optimal results, the following support (secondary) reagents are recommended: 1) Western Blotting: use donkey anti-goat IgG-HRP: sc-2020 (dilution range: 1:2000-1:100,000) or Cruz Marker™ compatible donkey anti-goat IgG-HRP: sc-2033 (dilution range: 1:2000-1:5000), Cruz Marker™ Molecular Weight Standards: sc-2035, TBS Blotto A Blocking Reagent: sc-2333 and Western Blotting Luminol Reagent: sc-2048. 2) Immunoprecipitation: use Protein A/G PLUS-Agarose: sc-2003 (0.5 ml agarose/2.0 ml). 3) Immunofluorescence: use donkey anti-goat IgG-FITC: sc-2024 (dilution range: 1:100-1:400) or donkey anti-goat IgG-TR: sc-2783 (dilution range: 1:100-1:400) with UltraCruz™ Mounting Medium: sc-24941.

DATA



IL-22R α 2 (K-18): sc-67635. Western blot analysis of IL-22R α 2 expression in mouse heart tissue extract.

RESEARCH USE

For research use only, not for use in diagnostic procedures.

PROTOCOLS

See our web site at www.scbt.com or our catalog for detailed protocols and support products.