

SEMA6B (E-18): sc-67830

BACKGROUND

Semaphorins are a family of cell surface and secreted proteins involved in neural development that are conserved from insects to humans. Members of this family are approximately 750 amino acids in length (including signal sequences) and are defined by a conserved extracellular "semaphorin" domain of approximately 500 amino acids containing 14-16 cysteines, blocks of conserved sequences and no obvious repeats. The transmembrane semaphorins are characterized by an additional 80 amino acid transmembrane domain and an 80-110 amino acid cytoplasmic domain. SEMA6B, also known as SEMA Z, is a single pass type I transmembrane protein highly expressed in adult brain and heart. It contains a proline-rich cytoplasmic domain with SH3 domain binding sites. SEMA6B functions as a repellent for sympathetic ganglion axons and suppresses neurite outgrowth. This activity is propagated through its receptor, plexin-A4. In addition, SEMA6B may play a role in tumor progression.

CHROMOSOMAL LOCATION

Genetic locus: SEMA6B (human) mapping to 19p13.3; Sema6b (mouse) mapping to 17 D.

SOURCE

SEMA6B (E-18) is an affinity purified goat polyclonal antibody raised against a peptide mapping within an N-terminal extracellular domain of SEMA6B of human origin.

PRODUCT

Each vial contains 200 µg IgG in 1.0 ml of PBS with < 0.1% sodium azide and 0.1% gelatin.

Blocking peptide available for competition studies, sc-67830 P, (100 µg peptide in 0.5 ml PBS containing < 0.1% sodium azide and 0.2% BSA).

APPLICATIONS

SEMA6B (E-18) is recommended for detection of semaphorin-6B of mouse, rat and human origin by Western Blotting (starting dilution 1:200, dilution range 1:100-1:1000), immunoprecipitation [1-2 µg per 100-500 µg of total protein (1 ml of cell lysate)], immunofluorescence (starting dilution 1:50, dilution range 1:50-1:500) and solid phase ELISA (starting dilution 1:30, dilution range 1:30-1:3000).

SEMA6B (E-18) is also recommended for detection of semaphorin-6B in additional species, including canine and bovine.

Suitable for use as control antibody for SEMA6B siRNA (h): sc-63006, SEMA6B siRNA (m): sc-63007, SEMA6B shRNA Plasmid (h): sc-63006-SH, SEMA6B shRNA Plasmid (m): sc-63007-SH, SEMA6B shRNA (h) Lentiviral Particles: sc-63006-V and SEMA6B shRNA (m) Lentiviral Particles: sc-63007-V.

Molecular Weight of SEMA6B: 110 kDa.

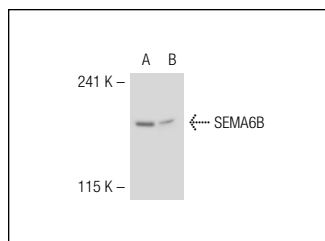
Molecular Weight of SEMA6Ba isoform: 73 kDa.

Positive Controls: SEMA6B (h): 293T Lysate: sc-112698.

RECOMMENDED SECONDARY REAGENTS

To ensure optimal results, the following support (secondary) reagents are recommended: 1) Western Blotting: use donkey anti-goat IgG-HRP: sc-2020 (dilution range: 1:2000-1:100,000) or Cruz Marker™ compatible donkey anti-goat IgG-HRP: sc-2033 (dilution range: 1:2000-1:5000), Cruz Marker™ Molecular Weight Standards: sc-2035, TBS Blotto A Blocking Reagent: sc-2333 and Western Blotting Luminol Reagent: sc-2048. 2) Immunoprecipitation: use Protein A/G PLUS-Agarose: sc-2003 (0.5 ml agarose/2.0 ml). 3) Immunofluorescence: use donkey anti-goat IgG-FITC: sc-2024 (dilution range: 1:100-1:400) or donkey anti-goat IgG-TR: sc-2783 (dilution range: 1:100-1:400) with UltraCruz™ Mounting Medium: sc-24941.

DATA



SEMA6B (E-18): sc-67830. Western blot analysis of SEMA6B expression in non-transfected: sc-117752 (A) and mouse SEMA6B: sc-112698 (B) 293T whole cell lysates.

STORAGE

Store at 4° C, **DO NOT FREEZE**. Stable for one year from the date of shipment. Non-hazardous. No MSDS required.

RESEARCH USE

For research use only, not for use in diagnostic procedures.

PROTOCOLS

See our web site at www.scbt.com or our catalog for detailed protocols and support products.

MONOS
Satisfaction
Guaranteed

Try **SEMA6B (G-7): sc-390928** or **SEMA6B (XX09-t): sc-74276**, our highly recommended monoclonal alternatives to SEMA6B (E-18).