

Pcdhb22 (M-14): sc-67929

BACKGROUND

Protocadherins are a large family of cadherin-like cell adhesion proteins that are involved in the establishment and maintenance of neuronal connections in the brain. There are three protocadherin gene clusters, designated α , β and γ , all of which contain multiple tandemly arranged genes. PCDHB15 (protocadherin β 15) is a 787 amino acid protein that is one of 16 proteins in the protocadherin β cluster. Unlike the α and γ gene clusters whose genes are spliced to downstream constant region exons during transcription, members of the β cluster (such as PCDHB15) do not use constant-region exons to produce mRNAs. As a result, each protocadherin β gene encodes the transmembrane, extracellular and short cytoplasmic domains of the protein. Localized to the cell membrane, PCDHB15 is a single-pass type I membrane protein that contains six cadherin domains. Pcdhb22 (protocadherin β 22) is the 794 amino acid rodent homolog of human PCDHB15.

REFERENCES

1. Wu, Q., et al. 2001. Comparative DNA sequence analysis of mouse and human protocadherin gene clusters. *Genome Res.* 11: 389-404.
2. Vanhalst, K., et al. 2001. The human and murine protocadherin- β one-exon gene families show high evolutionary conservation, despite the difference in gene number. *FEBS Lett.* 495: 120-125.
3. Miki, R., et al. 2005. Identification and characterization of coding single-nucleotide polymorphisms within human protocadherin- α and - β gene clusters. *Gene* 349: 1-14.
4. Yang, X., et al. 2005. A human- and male-specific protocadherin that acts through the Wnt signaling pathway to induce neuroendocrine transdifferentiation of prostate cancer cells. *Cancer Res.* 65: 5263-5271.
5. Sjöblom, T., et al. 2006. The consensus coding sequences of human breast and colorectal cancers. *Science* 314: 268-274.
6. Online Mendelian Inheritance in Man, OMIM™. 2007. Johns Hopkins University, Baltimore, MD. MIM Number: 606341. World Wide Web URL: <http://www.ncbi.nlm.nih.gov/omim/>

CHROMOSOMAL LOCATION

Genetic locus: Pcdhb22 (mouse) mapping to 18 B3.

SOURCE

Pcdhb22 (M-14) is an affinity purified goat polyclonal antibody raised against a peptide mapping near the C-terminus of Pcdhb22 of mouse origin.

PRODUCT

Each vial contains 200 μ g IgG in 1.0 ml of PBS with < 0.1% sodium azide and 0.1% gelatin.

Blocking peptide available for competition studies, sc-67929 P, (100 μ g peptide in 0.5 ml PBS containing < 0.1% sodium azide and 0.2% BSA).

STORAGE

Store at 4° C, ****DO NOT FREEZE****. Stable for one year from the date of shipment. Non-hazardous. No MSDS required.

APPLICATIONS

Pcdhb22 (M-14) is recommended for detection of Pcdhb22 of mouse and rat origin, and to a lesser extent, PCDHB15 of human origin by Western Blotting (starting dilution 1:200, dilution range 1:100-1:1000), immunoprecipitation [1-2 μ g per 100-500 μ g of total protein (1 ml of cell lysate)], immunofluorescence (starting dilution 1:50, dilution range 1:50-1:500) and solid phase ELISA (starting dilution 1:30, dilution range 1:30-1:3000).

Suitable for use as control antibody for PCDHB15 siRNA (h): sc-62757, Pcdhb22 siRNA (m): sc-62758, PCDHB15 shRNA Plasmid (h): sc-62757-SH, Pcdhb22 shRNA Plasmid (m): sc-62758-SH, PCDHB15 shRNA (h) Lentiviral Particles: sc-62757-V and Pcdhb22 shRNA (m) Lentiviral Particles: sc-62758-V.

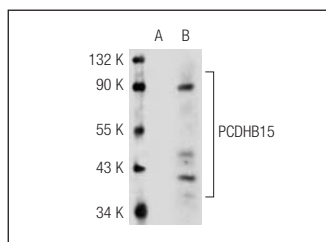
Molecular Weight of Pcdhb22: 90 kDa.

Positive Controls: NIH/3T3 whole cell lysate: sc-2210, 3T3-L1 cell lysate: sc-2243 or F9 cell lysate: sc-2245.

RECOMMENDED SECONDARY REAGENTS

To ensure optimal results, the following support (secondary) reagents are recommended: 1) Western Blotting: use donkey anti-goat IgG-HRP: sc-2020 (dilution range: 1:2000-1:100,000) or Cruz Marker™ compatible donkey anti-goat IgG-HRP: sc-2033 (dilution range: 1:2000-1:5000), Cruz Marker™ Molecular Weight Standards: sc-2035, TBS Blotto A Blocking Reagent: sc-2333 and Western Blotting Luminol Reagent: sc-2048. 2) Immunoprecipitation: use Protein A/G PLUS-Agarose: sc-2003 (0.5 ml agarose/2.0 ml). 3) Immunofluorescence: use donkey anti-goat IgG-FITC: sc-2024 (dilution range: 1:100-1:400) or donkey anti-goat IgG-TR: sc-2783 (dilution range: 1:100-1:400) with UltraCruz™ Mounting Medium: sc-24941.

DATA



Pcdhb22 (M-14): sc-67929. Western blot analysis of PCDHB15 expression in non-transfected: sc-117752 (A) and human PCDHB15 transfected: sc-115416 (B) 293T whole cell lysates.

RESEARCH USE

For research use only, not for use in diagnostic procedures.

PROTOCOLS

See our web site at www.scbt.com or our catalog for detailed protocols and support products.