

# VEPH1 (D-15): sc-67982



The Power to Question

## BACKGROUND

Ventricular zone-expressed PH domain-containing protein homolog 1 (VEPH1), also known as KIAA1692 or protein melted, is a 833 amino acid protein belonging to the MELT/VEPH family. VEPH1 is a peripheral membrane protein localized to the cytoplasmic side. VEPH1 has one PH domain which is required for the membrane targeting of the protein. The human gene encoding VEPH1 is 76% homologous to the *Drosophila* VEPH1 gene which encodes a protein that acts as a regulator of the Insulin signaling pathway. It is thought that this role of VEPH1 is conserved across species. VEPH1 exists as three isoforms produced by alternative splicing.

## REFERENCES

- Nagase, T., Kikuno, R., Hattori, A., Kondo, Y., Okumura, K. and Ohara, O. 2000. Prediction of the coding sequences of unidentified human genes. XIX. The complete sequences of 100 new cDNA clones from brain which code for large proteins *in vitro*. DNA Res. 7: 347-355.
- Muto, E., Tabata, Y., Taneda, T., Aoki, Y., Muto, A., Arai, K. and Watanabe, S. 2004. Identification and characterization of VEPH, a novel gene encoding a PH domain-containing protein expressed in the developing central nervous system of vertebrates. Biochimie 86: 523-531.
- Teleman, A.A., Chen, Y.W. and Cohen, S.M. 2005. *Drosophila* melted modulates FOXO and TOR activity. Dev. Cell 9: 271-281.
- Barrios-Rodiles, M., Brown, K.R., Ozdamar, B., Bose, R., Liu, Z., Donovan, R.S., Shinjo, F., Liu, Y., Dembowy, J., Taylor, I.W., Luga, V., Przulj, N., Robinson, M., Suzuki, H., Hayashizaki, Y., Jurisica, I. and Wrana, J.L. 2005. High-throughput mapping of a dynamic signaling network in mammalian cells. Science 307: 1621-1625.
- Online Mendelian Inheritance in Man, OMIM™. 2005. Johns Hopkins University, Baltimore, MD. MIM Number: 609594. World Wide Web URL: <http://www.ncbi.nlm.nih.gov/omim/>
- Olsen, J.V., Blagoev, B., Gnad, F., Macek, B., Kumar, C., Mortensen, P. and Mann, M. 2006. Global, *in vivo*, and site-specific phosphorylation dynamics in signaling networks. Cell 127: 635-648.
- Sjöblom, T., Jones, S., Wood, L.D., Parsons, D.W., Lin, J., Barber, T.D., Mandelker, D., Leary, R.J., Ptak, J., Silliman, N., Szabo, S., Buckhaults, P., Farrell, C., Meeh, P., Markowitz, S.D., Willis, J., Dawson, D., Willson, J.K., Gazdar, A.F., Hartigan, J., et al. 2006. The consensus coding sequences of human breast and colorectal cancers. Science 314: 268-274.

## CHROMOSOMAL LOCATION

Genetic locus: VEPH1 (human) mapping to 3q25.31; Veph1 (mouse) mapping to 3 E1.

## SOURCE

VEPH1 (D-15) is an affinity purified goat polyclonal antibody raised against a peptide mapping near the C-terminus of VEPH1 of human origin.

## RESEARCH USE

For research use only, not for use in diagnostic procedures.

## PRODUCT

Each vial contains 200 µg IgG in 1.0 ml of PBS with < 0.1% sodium azide and 0.1% gelatin.

Blocking peptide available for competition studies, sc-67982 P, (100 µg peptide in 0.5 ml PBS containing < 0.1% sodium azide and 0.2% BSA).

## APPLICATIONS

VEPH1 (D-15) is recommended for detection of VEPH1 of mouse, rat and human origin by Western Blotting (starting dilution 1:200, dilution range 1:100-1:1000), immunofluorescence (starting dilution 1:50, dilution range 1:50-1:500), immunohistochemistry (including paraffin-embedded sections) (starting dilution 1:50, dilution range 1:50-1:500) and solid phase ELISA (starting dilution 1:30, dilution range 1:30-1:3000).

VEPH1 (D-15) is also recommended for detection of VEPH1 in additional species, including equine, canine, bovine and porcine.

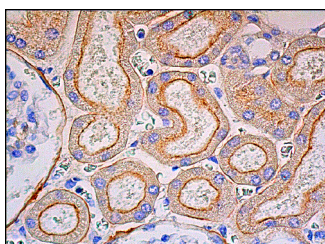
Suitable for use as control antibody for VEPH1 siRNA (h): sc-63212, VEPH1 siRNA (m): sc-63213, VEPH1 shRNA Plasmid (h): sc-63212-SH, VEPH1 shRNA Plasmid (m): sc-63213-SH, VEPH1 shRNA (h) Lentiviral Particles: sc-63212-V and VEPH1 shRNA (m) Lentiviral Particles: sc-63213-V.

Molecular Weight of VEPH1: 95 kDa.

## RECOMMENDED SECONDARY REAGENTS

To ensure optimal results, the following support (secondary) reagents are recommended: 1) Western Blotting: use donkey anti-goat IgG-HRP: sc-2020 (dilution range: 1:2000-1:100,000) or Cruz Marker™ compatible donkey anti-goat IgG-HRP: sc-2033 (dilution range: 1:2000-1:5000), Cruz Marker™ Molecular Weight Standards: sc-2035, TBS Blotto A Blocking Reagent: sc-2333 and Western Blotting Luminol Reagent: sc-2048. 2) Immunofluorescence: use donkey anti-goat IgG-FITC: sc-2024 (dilution range: 1:100-1:400) or donkey anti-goat IgG-TR: sc-2783 (dilution range: 1:100-1:400) with UltraCruz™ Mounting Medium: sc-24941. 3) Immunohistochemistry: use ImmunoCruz™: sc-2053 or ABC: sc-2023 goat IgG Staining Systems.

## DATA



VEPH1 (D-15): sc-67982. Immunoperoxidase staining of formalin fixed, paraffin-embedded human kidney tissue showing apical membrane staining of cells in tubules.

## STORAGE

Store at 4° C, \*\*DO NOT FREEZE\*\*. Stable for one year from the date of shipment. Non-hazardous. No MSDS required.