

Endo180 (E-17): sc-68076

BACKGROUND

Endo180 (endocytic receptor 180), also known as macrophage mannose receptor C type 2 (MRC2), urokinase plasminogen activator receptor-associated protein (uPARAP) or CD280 antigen, is a ubiquitously expressed, type I membrane protein with predominant expression in fetal lung and kidney. The extracellular domain of Endo180 contains a fibronectin type II domain, eight C-type lectin domains and a cysteine-rich domain. Endo180 functions as a cell surface receptor and mediates collagen matrix remodeling as well as cell migration by playing a role in the uptake and lysosomal degradation of collagen. Endo180 can bind to gelatin and collagens I, II, IV and V. It may play a role in wound regeneration. In addition, Endo180 can form a complex with uPAR and pro-uPA, thereby partaking in a variety of cellular proteolytic and signaling functions. Endo180 participates in the destruction of connective tissue during the progression of head and neck squamous cell carcinoma.

CHROMOSOMAL LOCATION

Genetic locus: MRC2 (human) mapping to 17q23.2; Mrc2 (mouse) mapping to 11 E1.

SOURCE

Endo180 (E-17) is an affinity purified goat polyclonal antibody raised against a peptide mapping within an extracellular domain of Endo180 of human origin.

PRODUCT

Each vial contains 200 µg IgG in 1.0 ml of PBS with < 0.1% sodium azide and 0.1% gelatin.

Blocking peptide available for competition studies, sc-68076 P, (100 µg peptide in 0.5 ml PBS containing < 0.1% sodium azide and 0.2% BSA).

APPLICATIONS

Endo180 (E-17) is recommended for detection of endocytic receptor 180 of mouse, rat and human origin by Western Blotting (starting dilution 1:200, dilution range 1:100-1:1000), immunoprecipitation [1-2 µg per 100-500 µg of total protein (1 ml of cell lysate)], immunofluorescence (starting dilution 1:50, dilution range 1:50-1:500) and solid phase ELISA (starting dilution 1:30, dilution range 1:30-1:3000).

Endo180 (E-17) is also recommended for detection of endocytic receptor 180 in additional species, including equine, canine, bovine and porcine.

Suitable for use as control antibody for Endo180 siRNA (h): sc-62276, Endo180 siRNA (m): sc-62277, Endo180 shRNA Plasmid (h): sc-62276-SH, Endo180 shRNA Plasmid (m): sc-62277-SH, Endo180 shRNA (h) Lentiviral Particles: sc-62276-V and Endo180 shRNA (m) Lentiviral Particles: sc-62277-V.

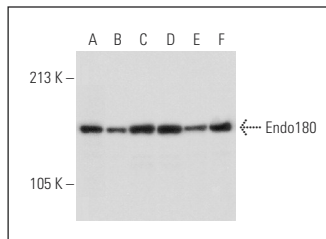
Molecular Weight of Endo180: 180 kDa.

Positive Controls: HEK293 whole cell lysate: sc-45136, HeLa whole cell lysate: sc-2200 or Hep G2 cell lysate: sc-2227.

RECOMMENDED SECONDARY REAGENTS

To ensure optimal results, the following support (secondary) reagents are recommended: 1) Western Blotting: use donkey anti-goat IgG-HRP: sc-2020 (dilution range: 1:2000-1:100,000) or Cruz Marker™ compatible donkey anti-goat IgG-HRP: sc-2033 (dilution range: 1:2000-1:5000), Cruz Marker™ Molecular Weight Standards: sc-2035, TBS Blotto A Blocking Reagent: sc-2333 and Western Blotting Luminol Reagent: sc-2048. 2) Immunoprecipitation: use Protein A/G PLUS-Agarose: sc-2003 (0.5 ml agarose/2.0 ml). 3) Immunofluorescence: use donkey anti-goat IgG-FITC: sc-2024 (dilution range: 1:100-1:400) or donkey anti-goat IgG-TR: sc-2783 (dilution range: 1:100-1:400) with UltraCruz™ Mounting Medium: sc-24941.

DATA



Endo180 (E-17): sc-68076. Western blot analysis of Endo180 expression in HEK293 (A), HeLa (B), Jurkat (C), K-562 (D), Hep G2 (E) and Y79 (F) whole cell lysates.

STORAGE

Store at 4° C, **DO NOT FREEZE**. Stable for one year from the date of shipment. Non-hazardous. No MSDS required.

RESEARCH USE

For research use only, not for use in diagnostic procedures.

PROTOCOLS

See our web site at www.scbt.com or our catalog for detailed protocols and support products.



Try **Endo180 (B-10): sc-271148**, our highly recommended monoclonal alternative to Endo180 (E-17).