

PKLR (S-14): sc-68119

BACKGROUND

In mammals, four different isoenzymes exist for pyruvate kinase. Based on their tissue distribution, the isoenzymes are designated L-type (for predominant expression in the liver), R-type (for predominant expression in red blood cells), M1-type (for predominant expression in muscle, brain and heart) and M2-type (for predominant expression in fetal tissues). Pyruvate kinases are responsible for catalyzing the final step in glycolysis: the conversion of phosphoenolpyruvate to pyruvate with the coinciding generation of ATP. The PKLR (pyruvate kinase, liver and RBC) gene encodes the L- and R-type isoenzymes through alternative splicing events under the control of different promoters. The R-type isoform, also known as RPK (R-type pyruvate kinase) exists as a tetramer and when functioning improperly, can result in chronic/hereditary nonspherocytic hemolytic anemia (CNSHA/HNSHA) or pyruvate kinase hyperactivity (also called high red cell ATP syndrome). The L-type isoform, alternatively known as PKL (pyruvate kinase L-type), also exists as a tetramer and is upregulated by glucose with implications in maturity-onset diabetes of the young (MODY).

CHROMOSOMAL LOCATION

Genetic locus: PKLR (human) mapping to 1q21; Pklr (mouse) mapping to 3 F1.

SOURCE

PKLR (S-14) is an affinity purified goat polyclonal antibody raised against a peptide mapping within an internal region of PKLR of human origin.

PRODUCT

Each vial contains 200 µg IgG in 1.0 ml of PBS with < 0.1% sodium azide and 0.1% gelatin.

Blocking peptide available for competition studies, sc-68119 P, (100 µg peptide in 0.5 ml PBS containing < 0.1% sodium azide and 0.2% BSA).

RESEARCH USE

For research use only, not for use in diagnostic procedures.

APPLICATIONS

PKLR (S-14) is recommended for detection of PKLR of mouse, rat and human origin by Western Blotting (starting dilution 1:200, dilution range 1:100-1:1000), immunoprecipitation [1-2 µg per 100-500 µg of total protein (1 ml of cell lysate)], immunofluorescence (starting dilution 1:50, dilution range 1:50-1:500) and solid phase ELISA (starting dilution 1:30, dilution range 1:30-1:3000).

Suitable for use as control antibody for PKLR siRNA (h): sc-62818, PKLR siRNA (m): sc-62819, PKLR shRNA Plasmid (h): sc-62818-SH, PKLR shRNA Plasmid (m): sc-62819-SH, PKLR shRNA (h) Lentiviral Particles: sc-62818-V and PKLR shRNA (m) Lentiviral Particles: sc-62819-V.

Molecular Weight of PKLR R-type monomer: 63 kDa.

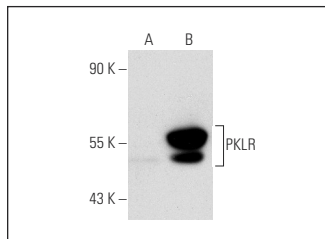
Molecular Weight of PKLR L-type monomer: 59 kDa.

Positive Controls: PKLR (h): 293T Lysate: sc-114132, PKLR (m): 293 Lysate: sc-179336 or K-562 whole cell lysate: sc-2203.

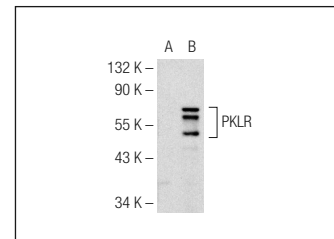
RECOMMENDED SECONDARY REAGENTS

To ensure optimal results, the following support (secondary) reagents are recommended: 1) Western Blotting: use donkey anti-goat IgG-HRP: sc-2020 (dilution range: 1:2000-1:100,000) or Cruz Marker™ compatible donkey anti-goat IgG-HRP: sc-2033 (dilution range: 1:2000-1:5000), Cruz Marker™ Molecular Weight Standards: sc-2035, TBS Blotto A Blocking Reagent: sc-2333 and Western Blotting Luminol Reagent: sc-2048. 2) Immunoprecipitation: use Protein A/G PLUS-Agarose: sc-2003 (0.5 ml agarose/2.0 ml). 3) Immunofluorescence: use donkey anti-goat IgG-FITC: sc-2024 (dilution range: 1:100-1:400) or donkey anti-goat IgG-TR: sc-2783 (dilution range: 1:100-1:400) with UltraCruz™ Mounting Medium: sc-24941.

DATA



PKLR (S-14): sc-68119. Western blot analysis of PKLR expression in non-transfected: sc-117752 (A) and human PKLR transfected: sc-114132 (B) 293T whole cell lysates.



PKLR (S-14): sc-68119. Western blot analysis of PKLR expression in non-transfected: sc-110760 (A) and mouse PKLR transfected: sc-179336 (B) 293 whole cell lysates.

STORAGE

Store at 4° C, **DO NOT FREEZE**. Stable for one year from the date of shipment. Non-hazardous. No MSDS required.

PROTOCOLS

See our web site at www.scbt.com or our catalog for detailed protocols and support products.



Try **PKLR (E-2): sc-133222** or **PKLR (D-10): sc-166228**, our highly recommended monoclonal alternatives to PKLR (S-14).