

DDX46 (T-17): sc-68307

BACKGROUND

DEAD-box proteins, characterized by the conserved motif Asp-Glu-Ala-Asp, are putative RNA helicases implicated in several cellular processes involving modifications of RNA secondary structure and ribosome/spliceosome assembly. Based on their distribution patterns, some members of this family may be involved in embryogenesis, spermatogenesis and cellular growth and division. DDX46 (DEAD (Asp-Glu-Ala-Asp) box polypeptide 46), also known as PRPF5, is a 1,031 amino acid protein that localizes to nuclear speckles and contains one helicase C-terminal domain and one helicase ATP-binding domain. One of several members of the DEAD-box family, DDX46 functions as an integral component of the 17S U2 snRNP and plays a crucial role in pre-mRNA splicing.

CHROMOSOMAL LOCATION

Genetic locus: DDX46 (human) mapping to 5q31.1; Ddx46 (mouse) mapping to 13 B1.

SOURCE

DDX46 (T-17) is an affinity purified goat polyclonal antibody raised against a peptide mapping near the C-terminus of DDX46 of human origin.

PRODUCT

Each vial contains 200 µg IgG in 1.0 ml of PBS with < 0.1% sodium azide and 0.1% gelatin. Also available as TransCruz reagent for Gel Supershift and ChIP applications, sc-68307 X, 200 µg/0.1 ml.

Blocking peptide available for competition studies, sc-68307 P, (100 µg peptide in 0.5 ml PBS containing < 0.1% sodium azide and 0.2% BSA).

STORAGE

Store at 4° C, ****DO NOT FREEZE****. Stable for one year from the date of shipment. Non-hazardous. No MSDS required.

APPLICATIONS

DDX46 (T-17) is recommended for detection of DDX46 of mouse, rat and human origin by Western Blotting (starting dilution 1:200, dilution range 1:100-1:1000), immunoprecipitation [1-2 µg per 100-500 µg of total protein (1 ml of cell lysate)], immunofluorescence (starting dilution 1:50, dilution range 1:50-1:500) and solid phase ELISA (starting dilution 1:30, dilution range 1:30-1:3000).

DDX46 (T-17) is also recommended for detection of DDX46 in additional species, including equine, canine, bovine, porcine and avian.

Suitable for use as control antibody for DDX46 siRNA (h): sc-62202, DDX46 siRNA (m): sc-62203, DDX46 shRNA Plasmid (h): sc-62202-SH, DDX46 shRNA Plasmid (m): sc-62203-SH, DDX46 shRNA (h) Lentiviral Particles: sc-62202-V and DDX46 shRNA (m) Lentiviral Particles: sc-62203-V.

DDX46 (T-17) X TransCruz antibody is recommended for Gel Supershift and ChIP applications.

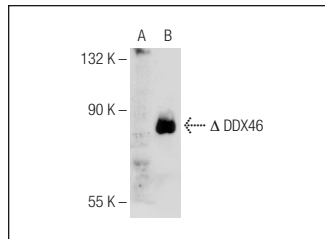
Molecular Weight of DDX46: 117 kDa.

Positive Controls: DDX46 (m): 293T Lysate: sc-119722.

RECOMMENDED SECONDARY REAGENTS

To ensure optimal results, the following support (secondary) reagents are recommended: 1) Western Blotting: use donkey anti-goat IgG-HRP: sc-2020 (dilution range: 1:2000-1:100,000) or Cruz Marker™ compatible donkey anti-goat IgG-HRP: sc-2033 (dilution range: 1:2000-1:5000), Cruz Marker™ Molecular Weight Standards: sc-2035, TBS Blotto A Blocking Reagent: sc-2333 and Western Blotting Luminol Reagent: sc-2048. 2) Immunoprecipitation: use Protein A/G PLUS-Agarose: sc-2003 (0.5 ml agarose/2.0 ml). 3) Immunofluorescence: use donkey anti-goat IgG-FITC: sc-2024 (dilution range: 1:100-1:400) or donkey anti-goat IgG-TR: sc-2783 (dilution range: 1:100-1:400) with UltraCruz™ Mounting Medium: sc-24941.

DATA



DDX46 (T-17): sc-68307. Western blot analysis of DDX46 expression in non-transfected: sc-117752 (A) and truncated mouse DDX46 transfected: sc-119722 (B) 293T whole cell lysates.

RESEARCH USE

For research use only, not for use in diagnostic procedures.

PROTOCOLS

See our web site at www.scbt.com or our catalog for detailed protocols and support products.

MONOS
Satisfaction
Guaranteed

Try **DDX46 (B-6): sc-514071**, our highly recommended monoclonal alternative to DDX46 (T-17).