

# SBNO1 (H-240): sc-68364

## BACKGROUND

SBNO1 (strawberry notch homolog 1), also designated Sno or MOP-3 (monocyte protein 3) in humans, is a 1,392 amino acid protein encoded by the human gene of the same name located on chromosome 12. Encoding over 1,100 genes within 132 million bases, chromosome 12 makes up about 4.5% of the human genome. A number of skeletal deformities are linked to chromosome 12, including hypochondrogenesis, achondrogenesis and Kniest dysplasia. Noonan syndrome, which includes heart and facial developmental defects among the primary symptoms, is caused by a mutant form of PTPN11 gene product, SH-PTP2. Chromosome 12 is also home to a homeobox gene cluster, which encodes crucial transcription factors for morphogenesis, and the natural killer complex gene cluster, encoding C-type lectin proteins which mediate the NK cell response to MHC I interaction. Trisomy 12p leads to facial development defects, seizure disorders and a host of other symptoms which vary in severity depending on the extent of mosaicism. It is most severe in cases of complete trisomy.

## CHROMOSOMAL LOCATION

Genetic locus: SBNO1 (human) mapping to 12q34.31; Sbn1 (mouse) mapping to 5 F.

## SOURCE

SBNO1 (H-240) is a rabbit polyclonal antibody raised against amino acids 1-240 mapping at the N-terminus of SBNO1 of human origin.

## PRODUCT

Each vial contains 200 µg IgG in 1.0 ml of PBS with < 0.1% sodium azide and 0.1% gelatin.

## APPLICATIONS

SBNO1 (H-240) is recommended for detection of SBNO1 of mouse, rat and human origin by Western Blotting (starting dilution 1:200, dilution range 1:100-1:1000), immunoprecipitation [1-2 µg per 100-500 µg of total protein (1 ml of cell lysate)], immunofluorescence (starting dilution 1:50, dilution range 1:50-1:500), immunohistochemistry (including paraffin-embedded sections) (starting dilution 1:50, dilution range 1:50-1:500) and solid phase ELISA (starting dilution 1:30, dilution range 1:30-1:3000).

SBNO1 (H-240) is also recommended for detection of SBNO1 in additional species, including equine, canine, bovine and porcine.

Suitable for use as control antibody for SBNO1 siRNA (h): sc-62633, SBNO1 siRNA (m): sc-62634, SBNO1 shRNA Plasmid (h): sc-62633-SH, SBNO1 shRNA Plasmid (m): sc-62634-SH, SBNO1 shRNA (h) Lentiviral Particles: sc-62633-V and SBNO1 shRNA (m) Lentiviral Particles: sc-62634-V.

SBNO1 (H-240) X TransCruz antibody is recommended for Gel Supershift and ChIP applications.

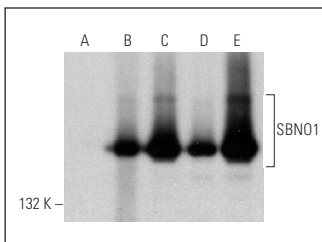
Molecular Weight of SBNO1: 155 kDa.

Positive Controls: SBNO1 (m): 293T Lysate: sc-123364, K-562 whole cell lysate: sc-2203 or Ramos cell lysate: sc-2216.

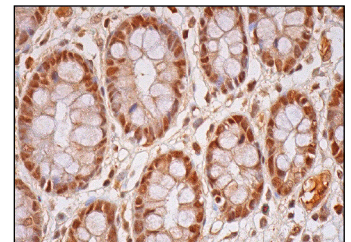
## RECOMMENDED SECONDARY REAGENTS

To ensure optimal results, the following support (secondary) reagents are recommended: 1) Western Blotting: use goat anti-rabbit IgG-HRP: sc-2004 (dilution range: 1:2000-1:100,000) or Cruz Marker™ compatible goat anti-rabbit IgG-HRP: sc-2030 (dilution range: 1:2000-1:5000), Cruz Marker™ Molecular Weight Standards: sc-2035, TBS Blotto A Blocking Reagent: sc-2333 and Western Blotting Luminol Reagent: sc-2048. 2) Immunoprecipitation: use Protein A/G PLUS-Agarose: sc-2003 (0.5 ml agarose/2.0 ml). 3) Immunofluorescence: use goat anti-rabbit IgG-FITC: sc-2012 (dilution range: 1:100-1:400) or goat anti-rabbit IgG-TR: sc-2780 (dilution range: 1:100-1:400) with UltraCruz™ Mounting Medium: sc-24941. 4) Immunohistochemistry: use ImmunoCruz™: sc-2051 or ABC: sc-2018 rabbit IgG Staining Systems.

## DATA



SBNO1 (H-240): sc-68364. Western blot analysis of SBNO1 expression in non-transfected CHO: sc-117750 (A), mouse SBNO1 transfected: sc-123364 (B), Ramos (C), RT-4 (D) and K-562 (E) whole cell lysates.



SBNO1 (H-240): sc-68364. Immunoperoxidase staining of formalin fixed, paraffin-embedded human colon tissue showing nuclear staining of glandular cells and endothelial cells.

## STORAGE

Store at 4° C, \*\*DO NOT FREEZE\*\*. Stable for one year from the date of shipment. Non-hazardous. No MSDS required.

## RESEARCH USE

For research use only, not for use in diagnostic procedures.

## PROTOCOLS

See our web site at [www.scbt.com](http://www.scbt.com) or our catalog for detailed protocols and support products.


 MONOS  
Satisfaction  
Guaranteed

Try **SBNO1 (A-5): sc-166519**, our highly recommended monoclonal alternative to SBNO1 (H-240).