

galectin-10 (M-30): sc-68427

BACKGROUND

Charcot-Leyden crystals are endogenous hexagonal bipyramidal crystals present in human tissues and secretions. Presence of Charcot-Leyden crystals correlates with the increased numbers of peripheral blood or tissue eosinophils that occurs with parasitic and allergic processes. Galectin-10, also referred to as Charcot-Leyden crystal (CLC) protein, singularly makes up these crystals. Galectin-10, a member of the galectin family of β -Galactoside binding proteins that bind to S-type animal lectins, is expressed solely in eosinophilic and basophilic leukocytes. Galectin-10 may possess carbohydrate or IgE-binding activities, and it plays a functional role in the biology of inflammation. Expression of galectin-10 is transcriptionally induced by butyric acid.

REFERENCES

1. Gleich, G.J., et al. 1976. Comparative properties of the Charcot-Leyden crystal protein and the major basic protein from human eosinophils. *J. Clin. Invest.* 57: 633-640.
2. Weller, P.F., et al. 1982. Human eosinophil lysophospholipase: the sole protein component of Charcot-Leyden crystals. *J. Immunol.* 128: 1346-1349.
3. Calafat, J., et al. 1997. Ultrastructural localization of Charcot-Leyden crystal protein in human eosinophils and basophils. *Eur. J. Haematol.* 58: 56-66.
4. Dvorak, A.M., et al. 1997. Localization of Charcot-Leyden crystal protein phenotypes of human basophils stimulated by f-Met peptide. *Clin. Exp. Allergy* 27: 452-474.
5. Dyer, K.D., et al. 1997. The genomic structure of the human Charcot-Leyden crystal protein gene is analogous to those of the galectin genes. *Genomics* 40: 217-221.
6. Swaminathan, G.J., et al. 1999. Selective recognition of mannose by the human eosinophil Charcot-Leyden crystal protein (galectin-10): a crystallographic study at 1.8 Å resolution. *Biochemistry* 38: 13837-13843.
7. Dyer, K.D., et al. 2001. Transcriptional regulation of galectin-10 (eosinophil Charcot-Leyden crystal protein): a GC box (-44 to -50) controls butyric acid induction of gene expression. *Life Sci.* 69: 201-212.
8. Ackerman, S.J., et al. 2002. Charcot-Leyden crystal protein (galectin-10) is not a dual function galectin with lysophospholipase activity but binds a lysophospholipase inhibitor in a novel structural fashion. *J. Biol. Chem.* 277: 14859-14868.
9. Dvorak, A.M. 2005. Immunogold ultrastructural techniques identify subcellular sites of chymase, Charcot-Leyden crystal protein, and histamine in basophils and mast cells. *Chem. Immunol. Allergy* 85: 89-97.

SOURCE

galectin-10 (M-30) is a rabbit polyclonal antibody raised against amino acids 11-40 mapping within an internal region of galectin-10 of mouse origin.

PRODUCT

Each vial contains 200 μ g IgG in 1.0 ml of PBS with < 0.1% sodium azide and 0.1% gelatin.

APPLICATIONS

galectin-10 (M-30) is recommended for detection of galectin-10 of mouse origin by Western Blotting (starting dilution 1:200, dilution range 1:100-1:1000), immunoprecipitation [1-2 μ g per 100-500 μ g of total protein (1 ml of cell lysate)], immunofluorescence (starting dilution 1:50, dilution range 1:50-1:500) and solid phase ELISA (starting dilution 1:30, dilution range 1:30-1:3000).

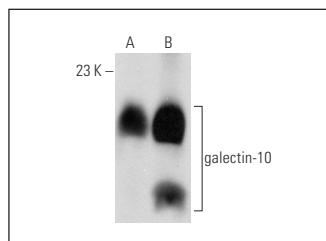
Molecular Weight of galectin-10: 17 kDa.

Positive Controls: Mouse PBL whole cell lysate or mouse spleen extract: sc-2391.

RECOMMENDED SECONDARY REAGENTS

To ensure optimal results, the following support (secondary) reagents are recommended: 1) Western Blotting: use goat anti-rabbit IgG-HRP: sc-2004 (dilution range: 1:2000-1:100,000) or Cruz Marker™ compatible goat anti-rabbit IgG-HRP: sc-2030 (dilution range: 1:2000-1:5000), Cruz Marker™ Molecular Weight Standards: sc-2035, TBS Blotto A Blocking Reagent: sc-2333 and Western Blotting Luminol Reagent: sc-2048. 2) Immunoprecipitation: use Protein A/G PLUS-Agarose: sc-2003 (0.5 ml agarose/2.0 ml). 3) Immunofluorescence: use goat anti-rabbit IgG-FITC: sc-2012 (dilution range: 1:100-1:400) or goat anti-rabbit IgG-TR: sc-2780 (dilution range: 1:100-1:400) with UltraCruz™ Mounting Medium: sc-24941.

DATA



galectin-10 (FL-68): sc-68427. Western blot analysis of galectin-10 expression in mouse PBL whole cell lysate (A) and mouse spleen tissue extract (B).

STORAGE

Store at 4° C, ****DO NOT FREEZE****. Stable for one year from the date of shipment. Non-hazardous. No MSDS required.

RESEARCH USE

For research use only, not for use in diagnostic procedures.

PROTOCOLS

See our web site at www.scbt.com or our catalog for detailed protocols and support products.