

Inhibin β -E/C (H-68): sc-68434

BACKGROUND

Inhibin β -E/C (Inhibin β E chain) is a 350 amino acid protein encoded by the human gene INHBE/INHBC. Inhibin β -E/C is a secreted protein that belongs to the TGF β family. Inhibins suppress the secretion of follitropin by the pituitary gland. Inhibins are involved in regulating a number of diverse functions such as hypothalamic and pituitary hormone secretion, gonadal hormone secretion, germ cell development and maturation, erythroid differentiation, insulin secretion, nerve cell survival, embryonic axial development or bone growth, depending on their subunit composition. Inhibins also appear to oppose the functions of activins. Expressed in brain, liver and prostate, Inhibin β -E/C is found as a homodimer or heterodimer through association with its α and β subunits, linked by one or more disulfide bonds.

REFERENCES

1. Del Signore, A., Mandillo, S., Rizzo, A., Di Mauro, E., Mele, A., Negri, R., Oliverio, A. and Paggi, P. 2004. Hippocampal gene expression is modulated by hypergravity. *Eur. J. Neurosci.* 19: 667-677.
2. Cupisti, S., Dittrich, R., Mueller, A., Strick, R., Stiegler, E., Binder, H., Beckmann, M.W. and Strissel, P. 2007. Correlations between anti-müllerian hormone, inhibin B, and activin A in follicular fluid in IVF/ICSI patients for assessing the maturation and developmental potential of oocytes. *Eur. J. Med. Res.* 12: 604-608.
3. Shidaifat, F., Al-Zuhair, I. and Bani-Ismail, Z. 2007. Interaction of testosterone with Inhibin α and β A subunits to regulate prostate gland growth. *Endocrine* 31: 38-43.
4. Winters, S.J. and Moore, J.P. 2007. Paracrine control of gonadotrophs. *Semin. Reprod. Med.* 25: 379-387.
5. Karim, N., Macdonald, D., Dolan, A.L., Fogelman, I., Wierzbicki, A.S. and Hampson, G. 2007. The relationship between gonadotrophins, gonadal hormones and bone mass in men. *Clin. Endocrinol.* 68: 94-101.
6. Hoening, A., Kuhn, C., Shabani, N., Schulze, S., Gingelmaier, A., Dian, D., Jeschke, U., Friese, K. and Mylonas, I. 2007. The immunohistochemical expression of the inhibin/activin subunits is upregulated by interferon- β 1a in Ishikawa cell line. *Anticancer Res.* 27: 2005-2010.
7. Gingelmaier, A., Gutsche, S., Mylonas, I., Shabani, N., Kuhn, C., Kunze, S., Jeschke, U. and Friese, K. 2007. Expression of HPV, steroid receptors (ER α , ER β , PR-A and PR-B) and inhibin/activin subunits (α , β A and β B) in adenocarcinoma of the endometrium. *Anticancer Res.* 27: 2011-2017.

CHROMOSOMAL LOCATION

Genetic locus: INHBE (human) mapping to 12q13.3, INHBC (human) mapping to 12q13.1; Inhbe (mouse) mapping to 10 D3, Inhbc (mouse) mapping to 10 D3.

SOURCE

Inhibin β -E/C (H-68) is a rabbit polyclonal antibody raised against amino acids 248-315 mapping near the C-terminus of Inhibin β -E of human origin.

RESEARCH USE

For research use only, not for use in diagnostic procedures.

PRODUCT

Each vial contains 200 μ g IgG in 1.0 ml of PBS with < 0.1% sodium azide and 0.1% gelatin.

APPLICATIONS

Inhibin β -E/C (H-68) is recommended for detection of Inhibin β -E and Inhibin β -C of mouse, rat and human origin by Western Blotting (starting dilution 1:200, dilution range 1:100-1:1000), immunoprecipitation [1–2 μ g per 100–500 μ g of total protein (1 ml of cell lysate)], immunofluorescence (starting dilution 1:50, dilution range 1:50-1:500) and solid phase ELISA (starting dilution 1:30, dilution range 1:30-1:3000).

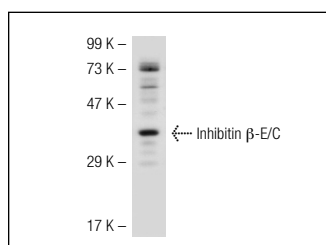
Inhibin β -E/C (H-68) is also recommended for detection of Inhibin β -E and Inhibin β -C in additional species, including equine, canine, bovine and porcine.

Molecular Weight of Inhibin β -E/C: 39 kDa.

RECOMMENDED SECONDARY REAGENTS

To ensure optimal results, the following support (secondary) reagents are recommended: 1) Western Blotting: use goat anti-rabbit IgG-HRP: sc-2004 (dilution range: 1:2000-1:100,000) or Cruz Marker™ compatible goat anti-rabbit IgG-HRP: sc-2030 (dilution range: 1:2000-1:5000), Cruz Marker™ Molecular Weight Standards: sc-2035, TBS Blotto A Blocking Reagent: sc-2333 and Western Blotting Luminol Reagent: sc-2048. 2) Immunoprecipitation: use Protein A/G PLUS-Agarose: sc-2003 (0.5 ml agarose/2.0 ml). 3) Immunofluorescence: use goat anti-rabbit IgG-FITC: sc-2012 (dilution range: 1:100-1:400) or goat anti-rabbit IgG-TR: sc-2780 (dilution range: 1:100-1:400) with UltraCruz™ Mounting Medium: sc-24941.

DATA



Inhibin β -E/C (H-68): sc-68434. Western blot analysis of Inhibin β -E/C expression in HeLa whole cell lysate.

STORAGE

Store at 4° C, ****DO NOT FREEZE****. Stable for one year from the date of shipment. Non-hazardous. No MSDS required.

PROTOCOLS

See our web site at www.scbt.com or our catalog for detailed protocols and support products.