

CTR9 (E-16): sc-68460

BACKGROUND

CTR9 (Ctr9, Paf1/RNA polymerase II complex component, homolog), also known as SH2BP1 (SH2 domain-binding protein 1), TSBP or p150, is a 1,173 amino acid nuclear protein that contains 16 TPR repeats. Widely expressed, CTR9 interacts with Paf1, LEO1 and Parafibromin to form the PAF protein complex. Human and mouse CTR9 share 98.6% amino acid sequence homology, and the gene encoding CTR9 maps to human chromosome 11, which houses over 1,400 genes and comprises nearly 4% of the human genome. Jervell and Lange-Nielsen syndrome, Jacobsen syndrome, Niemann-Pick disease, hereditary angioedema and Smith-Lemli-Opitz syndrome are associated with defects in genes that maps to chromosome 11.

REFERENCES

1. Nagase, T., et al. 1995. Prediction of the coding sequences of unidentified human genes. IV. The coding sequences of 40 new genes (KIAA0121-KIAA0160) deduced by analysis of cDNA clones from human cell line KG-1. *DNA Res.* 2: 167-174.
2. Malek, S.N., et al. 1996. p150TSP, a conserved nuclear phosphoprotein that contains multiple tetratricopeptide repeats and binds specifically to SH2 domains. *J. Biol. Chem.* 271: 6952-6962.
3. Jira, P.E., et al. 2003. Smith-Lemli-Opitz syndrome and the DHCR7 gene. *Ann. Hum. Genet.* 67: 269-280.
4. Rozenblatt-Rosen, O., et al. 2005. The parafibromin tumor suppressor protein is part of a human Paf1 complex. *Mol. Cell. Biol.* 25: 612-620.
5. Online Mendelian Inheritance in Man, OMIM™. 2006. Johns Hopkins University, Baltimore, MD. MIM Number: 609366. World Wide Web URL: <http://www.ncbi.nlm.nih.gov/omim/>
6. Youn, M.Y., et al. 2007. hCTR9, a component of Paf1 complex, participates in the transcription of interleukin 6-responsive genes through regulation of STAT3-DNA interactions. *J. Biol. Chem.* 282: 34727-34734.

CHROMOSOMAL LOCATION

Genetic locus: CTR9 (human) mapping to 11p15.3; Ctr9 (mouse) mapping to 7 E3.

SOURCE

CTR9 (E-16) is an affinity purified goat polyclonal antibody raised against a peptide mapping near the N-terminus of CTR9 of human origin.

PRODUCT

Each vial contains 200 µg IgG in 1.0 ml of PBS with < 0.1% sodium azide and 0.1% gelatin.

Blocking peptide available for competition studies, sc-68460 P, (100 µg peptide in 0.5 ml PBS containing < 0.1% sodium azide and 0.2% BSA).

STORAGE

Store at 4° C, ****DO NOT FREEZE****. Stable for one year from the date of shipment. Non-hazardous. No MSDS required.

APPLICATIONS

CTR9 (E-16) is recommended for detection of CTR9 of mouse, rat and human origin by Western Blotting (starting dilution 1:200, dilution range 1:100-1:1000), immunoprecipitation [1-2 µg per 100-500 µg of total protein (1 ml of cell lysate)], immunofluorescence (starting dilution 1:50, dilution range 1:50-1:500) and solid phase ELISA (starting dilution 1:30, dilution range 1:30-1:3000).

CTR9 (E-16) is also recommended for detection of CTR9 in additional species, including equine, canine, bovine, porcine and avian.

Suitable for use as control antibody for CTR9 siRNA (h): sc-77047, CTR9 siRNA (m): sc-77048, CTR9 shRNA Plasmid (h): sc-77047-SH, CTR9 shRNA Plasmid (m): sc-77048-SH, CTR9 shRNA (h) Lentiviral Particles: sc-77047-V and CTR9 shRNA (m) Lentiviral Particles: sc-77048-V.

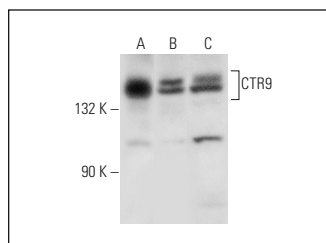
Molecular Weight of CTR9: 134 kDa.

Positive Controls: HeLa whole cell lysate: sc-2200, NIH/3T3 whole cell lysate: sc-2210 or Raji whole cell lysate: sc-364236.

RECOMMENDED SECONDARY REAGENTS

To ensure optimal results, the following support (secondary) reagents are recommended: 1) Western Blotting: use donkey anti-goat IgG-HRP: sc-2020 (dilution range: 1:2000-1:100,000) or Cruz Marker™ compatible donkey anti-goat IgG-HRP: sc-2033 (dilution range: 1:2000-1:5000), Cruz Marker™ Molecular Weight Standards: sc-2035, TBS Blotto A Blocking Reagent: sc-2333 and Western Blotting Luminol Reagent: sc-2048. 2) Immunoprecipitation: use Protein A/G PLUS-Agarose: sc-2003 (0.5 ml agarose/2.0 ml). 3) Immunofluorescence: use donkey anti-goat IgG-FITC: sc-2024 (dilution range: 1:100-1:400) or donkey anti-goat IgG-TR: sc-2783 (dilution range: 1:100-1:400) with UltraCruz™ Mounting Medium: sc-24941.

DATA



CTR9 (E-16): sc-68460. Western blot analysis of CTR9 expression in HeLa (A), Raji (B) and NIH/3T3 (C) whole cell lysates.

RESEARCH USE

For research use only, not for use in diagnostic procedures.

PROTOCOLS

See our web site at www.scbt.com or our catalog for detailed protocols and support products.