

# Krox-26 (S-20): sc-68575

## BACKGROUND

Krox-26, also known as ZNF22 (zinc-finger protein 22), HKR-T1 or ZNF422, is a 224 amino acid protein that localizes to the nucleus and contains 5 CDH2-type zinc fingers. One of several members of the krueppel C<sub>2</sub>H<sub>2</sub>-type zinc-finger protein family, Krox-26 binds to DNA and is thought to be involved in transcriptional regulation events related to tooth formation, both in embryonic and adult tissue. The gene encoding Krox-26 maps to human chromosome 10, which houses over 1,200 genes and comprises nearly 4.5% of the human genome. Defects in some of the genes that map to chromosome 10 are associated with Charcot-Marie Tooth disease, Jackson-Weiss syndrome, Usher syndrome, nonsyndromic deafness, Wolman's syndrome, Cowden syndrome, multiple endocrine neoplasia type 2 and porphyria.

## REFERENCES

- Thiesen, H.J. 1990. Multiple genes encoding zinc-finger domains are expressed in human T cells. *New Biol.* 2: 363-374.
- Bray, P., et al. 1991. Characterization and mapping of human genes encoding zinc-finger proteins. *Proc. Natl. Acad. Sci. USA* 88: 9563-9567.
- Wu, B.Y., et al. 1992. Isolation of a cDNA clone encoding a zinc-finger protein highly expressed in T-leukemia lines. *Blood* 80: 2571-2576.
- Rousseau-Merck, M.F., et al. 1992. A cluster of expressed zinc-finger protein genes in the pericentromeric region of human chromosome 10. *Genomics* 13: 845-848.
- Lichter, P., et al. 1992. Clustering of C<sub>2</sub>H<sub>2</sub> zinc-finger motif sequences within telomeric and fragile site regions of human chromosomes. *Genomics* 13: 999-1007.
- Love, D.R., et al. 1993. A polymorphic dinucleotide repeat at the ZNF22 locus. *Hum. Mol. Genet.* 2: 491.

## CHROMOSOMAL LOCATION

Genetic locus: ZNF22 (human) mapping to 10q11.21; Zfp422 (mouse) mapping to 6 E3.

## SOURCE

Krox-26 (S-20) is an affinity purified goat polyclonal antibody raised against a peptide mapping near the N-terminus of Krox-26 of human origin.

## PRODUCT

Each vial contains 200 µg IgG in 1.0 ml of PBS with < 0.1% sodium azide and 0.1% gelatin.

Blocking peptide available for competition studies, sc-68575 P, (100 µg peptide in 0.5 ml PBS containing < 0.1% sodium azide and 0.2% BSA).

Available as TransCruz reagent for Gel Supershift and ChIP applications, sc-68575 X, 200 µg/0.1 ml.

## STORAGE

Store at 4° C, \*\*DO NOT FREEZE\*\*. Stable for one year from the date of shipment. Non-hazardous. No MSDS required.

## APPLICATIONS

Krox-26 (S-20) is recommended for detection of zinc finger protein 22 of mouse, rat and human origin by Western Blotting (starting dilution 1:200, dilution range 1:100-1:1000), immunoprecipitation [1-2 µg per 100-500 µg of total protein (1 ml of cell lysate)], immunofluorescence (starting dilution 1:50, dilution range 1:50-1:500) and solid phase ELISA (starting dilution 1:30, dilution range 1:30-1:3000).

Krox-26 (S-20) is also recommended for detection of zinc finger protein 22 in additional species, including canine, bovine and porcine.

Suitable for use as control antibody for Krox-26 siRNA (h): sc-62530, Krox-26 siRNA (m): sc-62531, Krox-26 shRNA Plasmid (h): sc-62530-SH, Krox-26 shRNA Plasmid (m): sc-62531-SH, Krox-26 shRNA (h) Lentiviral Particles: sc-62530-V and Krox-26 shRNA (m) Lentiviral Particles: sc-62531-V.

Krox-26 (S-20) X TransCruz antibody is recommended for Gel Supershift and ChIP applications.

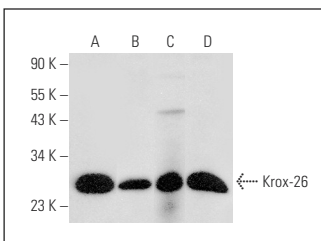
Molecular Weight of Krox-26: 26 kDa.

Positive Controls: rat skeletal muscle extract: sc-364810, mouse embryo extract: sc-364239 or mouse liver extract: sc-2256.

## RECOMMENDED SECONDARY REAGENTS

To ensure optimal results, the following support (secondary) reagents are recommended: 1) Western Blotting: use donkey anti-goat IgG-HRP: sc-2020 (dilution range: 1:2000-1:100,000) or Cruz Marker™ compatible donkey anti-goat IgG-HRP: sc-2033 (dilution range: 1:2000-1:5000), Cruz Marker™ Molecular Weight Standards: sc-2035, TBS Blotto A Blocking Reagent: sc-2333 and Western Blotting Luminol Reagent: sc-2048. 2) Immunoprecipitation: use Protein A/G PLUS-Agarose: sc-2003 (0.5 ml agarose/2.0 ml). 3) Immunofluorescence: use donkey anti-goat IgG-FITC: sc-2024 (dilution range: 1:100-1:400) or donkey anti-goat IgG-TR: sc-2783 (dilution range: 1:100-1:400) with UltraCruz™ Mounting Medium: sc-24941.

## DATA



Krox-26 (S-20): sc-68575. Western blot analysis of Krox-26 expression in rat skeletal muscle (A), mouse embryo (B), mouse liver (C) and mouse skeletal muscle (D) tissue extracts.

## RESEARCH USE

For research use only, not for use in diagnostic procedures.