

# YSK1 (C-19): sc-6864

## BACKGROUND

Several mammalian kinases have been identified which exhibit sequence similarity to the *Saccharomyces cerevisiae* serine/threonine kinase STE20. STE20 is involved in relaying signals from G-protein coupled receptors, and it lies upstream of a MAP kinase kinase kinase. Mammalian STE20-like kinases include YSK1, KHS, GLK, NIK, HPK1, Krs-1, Krs-2 and GC kinase. YSK1 (yeast SPS/STE20-related kinase 1) is expressed in a wide variety of cell types and tissues and has been shown to have kinase activity. Unlike many of the other STE20-like kinases, however, overexpression of YSK1 does not lead to activation of the SAPK/JNK pathway.

## CHROMOSOMAL LOCATION

Genetic locus: STK25 (human) mapping to 2q37.3; Stk25 (mouse) mapping to 1 D.

## SOURCE

YSK1 (C-19) is an affinity purified goat polyclonal antibody raised against a peptide mapping at the C-terminus of YSK1 of human origin.

## PRODUCT

Each vial contains 200 µg IgG in 1.0 ml of PBS with < 0.1% sodium azide and 0.1% gelatin.

Blocking peptide available for competition studies, sc-6864 P, (100 µg peptide in 0.5 ml PBS containing < 0.1% sodium azide and 0.2% BSA).

## STORAGE

Store at 4° C, **\*\*DO NOT FREEZE\*\***. Stable for one year from the date of shipment. Non-hazardous. No MSDS required.

## RESEARCH USE

For research use only, not for use in diagnostic procedures.

## APPLICATIONS

YSK1 (C-19) is recommended for detection of YSK1 of mouse, rat and human origin by Western Blotting (starting dilution 1:200, dilution range 1:100-1:1000), immunoprecipitation [1-2 µg per 100-500 µg of total protein (1 ml of cell lysate)], immunofluorescence (starting dilution 1:50, dilution range 1:50-1:500) and solid phase ELISA (starting dilution 1:30, dilution range 1:30-1:3000).

YSK1 (C-19) is also recommended for detection of YSK1 in additional species, including equine, canine, bovine and porcine.

Suitable for use as control antibody for YSK1 siRNA (h): sc-39253, YSK1 siRNA (m): sc-39254, YSK1 shRNA Plasmid (h): sc-39253-SH, YSK1 shRNA Plasmid (m): sc-39254-SH, YSK1 shRNA (h) Lentiviral Particles: sc-39253-V and YSK1 shRNA (m) Lentiviral Particles: sc-39254-V.

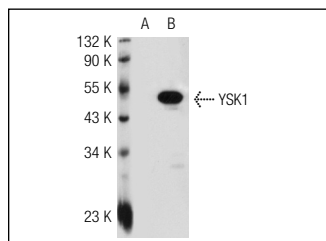
Molecular Weight of YSK1: 48 kDa.

Positive Controls: YSK1 (h2): 293T Lysate: sc-171458, K-562 whole cell lysate: sc-2203 or A-431 whole cell lysate: sc-2201.

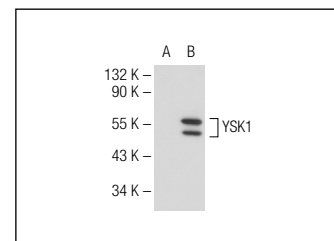
## RECOMMENDED SECONDARY REAGENTS

To ensure optimal results, the following support (secondary) reagents are recommended: 1) Western Blotting: use donkey anti-goat IgG-HRP: sc-2020 (dilution range: 1:2000-1:100,000) or Cruz Marker™ compatible donkey anti-goat IgG-HRP: sc-2033 (dilution range: 1:2000-1:5000), Cruz Marker™ Molecular Weight Standards: sc-2035, TBS Blotto A Blocking Reagent: sc-2333 and Western Blotting Luminol Reagent: sc-2048. 2) Immunoprecipitation: use Protein A/G PLUS-Agarose: sc-2003 (0.5 ml agarose/2.0 ml). 3) Immunofluorescence: use donkey anti-goat IgG-FITC: sc-2024 (dilution range: 1:100-1:400) or donkey anti-goat IgG-TR: sc-2783 (dilution range: 1:100-1:400) with UltraCruz™ Mounting Medium: sc-24941.

## DATA



YSK1 (C-19): sc-6864. Western blot analysis of YSK1 expression in non-transfected: sc-117752 (A) and human YSK1 transfected: sc-111510 (B) 293T whole cell lysates.



YSK1 (C-19): sc-6864. Western blot analysis of YSK1 expression in non-transfected: sc-117752 (A) and human YSK1 transfected: sc-171458 (B) 293T whole cell lysates.

## PROTOCOLS

See our web site at [www.scbt.com](http://www.scbt.com) or our catalog for detailed protocols and support products.


 MONOS  
Satisfation  
Guaranteed

Try **YSK1 (E-5): sc-271196** or **YSK1 (E-7): sc-398092**, our highly recommended monoclonal alternatives to YSK1 (C-19).