

HRPAP20 (FL-175): sc-68850

BACKGROUND

HRPAP20 (UPF0240 protein C6ORF66, hormone-regulated proliferation-associated protein 20) is a 175 amino acid protein encoded by the human gene C6ORF66. HRPAP20 is a novel hormone-regulated, proliferation-associated protein. In tumor cell lines, constitutive HRPAP20 expression enhanced proliferation and suppressed apoptosis, characteristics frequently associated with malignant progression. Invasive breast cancer cell lines and human breast tumor specimens express elevated HRPAP20, which can increase malignant cell invasion in transfection experiments using such cell lines as MCF-7 and MDA-MB-231. Transfection with HRPAP20 will increase secretion of matrix metalloproteinase-9 (MMP-9). Conversely, knockdown of HRPAP20 with small interfering RNA will reduce invasion and inhibit secretion of MMP-9.

REFERENCES

1. Jones, J.L., Shaw, J.A., Pringle, J.H. and Walker, R.A. 2003. Primary breast myoepithelial cells exert an invasion-suppressor effect on breast cancer cells via paracrine down-regulation of MMP expression in fibroblasts and tumour cells. *J. Pathol.* 201: 562-572.
2. Karp, C.M., Pan, H., Zhang, M., Buckley, D.J., Schuler, L.A. and Buckley, A.R. 2004. Identification of HRPAP20: a novel phosphoprotein that enhances growth and survival in hormone-responsive tumor cells. *Cancer Res.* 64: 1016-1025.
3. Larkins, T.L., Nowell, M., Singh, S. and Sanford, G.L. 2006. Inhibition of cyclooxygenase-2 decreases breast cancer cell motility, invasion and matrix metalloproteinase expression. *BMC Cancer* 6: 181-181.
4. Jiang, W.G., Davies, G., Martin, T.A., Parr, C., Watkins, G., Mason, M.D. and Mansel, R.E. 2006. Expression of membrane type-1 matrix metalloproteinase, MT1-MMP in human breast cancer and its impact on invasiveness of breast cancer cells. *Int. J. Mol. Med.* 17: 583-590.
5. Byun, H.J., Hong, I.K., Kim, E., Jin, Y.J., Jeoung, D.I., Hahn, J.H., Kim, Y.M., Park, S.H. and Lee, H. 2006. A splice variant of CD99 increases motility and MMP-9 expression of human breast cancer cells through the AKT-, ERK-, and JNK-dependent AP-1 activation signaling pathways. *J. Biol. Chem.* 281: 34833-34847.

CHROMOSOMAL LOCATION

Genetic locus: NDUFAF4 (human) mapping to 6q16.1; Ndufaf4 (mouse) mapping to 4 A3.

SOURCE

HRPAP20 (FL-175) is a rabbit polyclonal antibody raised against amino acids 1-175 representing full length HRPAP20 of human origin.

PRODUCT

Each vial contains 200 µg IgG in 1.0 ml of PBS with < 0.1% sodium azide and 0.1% gelatin.

RESEARCH USE

For research use only, not for use in diagnostic procedures.

APPLICATIONS

HRPAP20 (FL-175) is recommended for detection of HRPAP20 of mouse, rat and human origin by Western Blotting (starting dilution 1:200, dilution range 1:100-1:1000), immunoprecipitation [1-2 µg per 100-500 µg of total protein (1 ml of cell lysate)], immunofluorescence (starting dilution 1:50, dilution range 1:50-1:500) and solid phase ELISA (starting dilution 1:30, dilution range 1:30-1:3000).

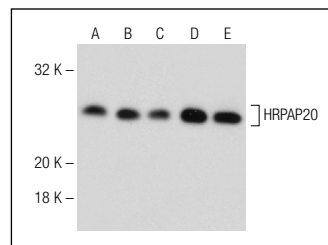
Suitable for use as control antibody for HRPAP20 siRNA (h): sc-62476, HRPAP20 siRNA (m): sc-155906, HRPAP20 shRNA Plasmid (h): sc-62476-SH, HRPAP20 shRNA Plasmid (m): sc-155906-SH, HRPAP20 shRNA (h) Lentiviral Particles: sc-62476-V and HRPAP20 shRNA (m) Lentiviral Particles: sc-155906-V.

Molecular Weight (predicted) of HRPAP20: 20 kDa.

Molecular Weight (observed) of HRPAP20: 25 kDa.

Positive Controls: MCF7 whole cell lysate: sc-2206, T-47D cell lysate: sc-2293 or K-562 whole cell lysate: sc-2203.

DATA



HRPAP20 (FL-175): sc-68850. Western blot analysis of HRPAP20 expression in T-47D (A), Ramos (B), MDA-MB-231 (C), K-562 (D) and Raji (E) whole cell lysates.

STORAGE

Store at 4° C, **DO NOT FREEZE**. Stable for one year from the date of shipment. Non-hazardous. No MSDS required.

PROTOCOLS

See our web site at www.scbt.com or our catalog for detailed protocols and support products.


 MONOS
Satisfation
Guaranteed

Try **HRPAP20 (G-10): sc-166928** or **HRPAP20 (H-9): sc-166929**, our highly recommended monoclonal alternatives to HRPAP20 (FL-175).