

PKDREJ (M-86): sc-68860



The Power to Question

BACKGROUND

PKDREJ (polycystic kidney disease and receptor for egg jelly-related protein) is a 2,253 amino acid multi-pass membrane protein that belongs to the polycystin family and is encoded by an intronless gene. Expressed exclusively in testis, PKDREJ is thought to play a key role in fertilization, possibly by generating a calcium transport channel that is directly associated with the acrosome reaction of the sperm. Human PKDREJ, which can exist as homomultimers or heteromultimers, shares 64% identity with its mouse homolog, suggesting a conserved function between species. PKDREJ contains one receptor for egg jelly (REJ) domain, 11 transmembrane domains, one G-protein-coupled receptor proteolytic site (GPS) domain and one lipoygenase domain. Several isoforms of PKDREJ exist due to alternative splicing events.

REFERENCES

1. Moy, G.W., Mendoza, L.M., Schulz, J.R., Swanson, W.J., Glabe, C.G. and Vacquier, V.D. 1996. The sea urchin sperm receptor for egg jelly is a modular protein with extensive homology to the human polycystic kidney disease protein, PKD1. *J. Cell Biol.* 133: 809-817.
2. Hughes, J., Ward, C.J., Aspinwall, R., Butler, R. and Harris, P.C. 1999. Identification of a human homologue of the sea urchin receptor for egg jelly: a polycystic kidney disease-like protein. *Hum. Mol. Genet.* 8: 543-549.
3. Mengerink, K.J., Moy, G.W. and Vacquier, V.D. 2000. suREJ proteins: new signalling molecules in sea urchin spermatozoa. *Zygote* 8: 28-30.
4. Qian, F., Boletta, A., Bhunia, A.K., Xu, H., Liu, L., Ahrabi, A.K., Watnick, T.J., Zhou, F. and Germino, G.G. 2002. Cleavage of polycystin-1 requires the receptor for egg jelly domain and is disrupted by human autosomal-dominant polycystic kidney disease 1-associated mutations. *Proc. Natl. Acad. Sci. USA* 99: 16981-16986.
5. Online Mendelian Inheritance in Man, OMIM™. 2002. Johns Hopkins University, Baltimore, MD. MIM Number: 604670. World Wide Web URL: <http://www.ncbi.nlm.nih.gov/omim/>
6. Galindo, B.E., Moy, G.W. and Vacquier, V.D. 2004. A third sea urchin sperm receptor for egg jelly module protein, suREJ2, concentrates in the plasma membrane over the sperm mitochondrion. *Dev. Growth Differ.* 46: 53-60.
7. Sutton, K.A., Jungnickel, M.K., Ward, C.J., Harris, P.C. and Florman, H.M. 2006. Functional characterization of PKDREJ, a male germ cell-restricted polycystin. *J. Cell. Physiol.* 209: 493-500.

CHROMOSOMAL LOCATION

Genetic locus: PKDREJ (human) mapping to 22q13.31; Pkdrej (mouse) mapping to 15 E2.

SOURCE

PKDREJ (M-86) is a rabbit polyclonal antibody raised against amino acids 2041-2126 mapping at the C-terminus of PKDREJ of mouse origin.

PRODUCT

Each vial contains 200 µg IgG in 1.0 ml of PBS with < 0.1% sodium azide and 0.1% gelatin.

APPLICATIONS

PKDREJ (M-86) is recommended for detection of PKDREJ of mouse, rat and, to a lesser extent, human origin by Western Blotting (starting dilution 1:200, dilution range 1:100-1:1000), immunoprecipitation [1-2 µg per 100-500 µg of total protein (1 ml of cell lysate)], immunofluorescence (starting dilution 1:50, dilution range 1:50-1:500) and solid phase ELISA (starting dilution 1:30, dilution range 1:30-1:3000).

Suitable for use as control antibody for PKDREJ siRNA (h): sc-76157, PKDREJ siRNA (m): sc-76158, PKDREJ shRNA Plasmid (h): sc-76157-SH, PKDREJ shRNA Plasmid (m): sc-76158-SH, PKDREJ shRNA (h) Lentiviral Particles: sc-76157-V and PKDREJ shRNA (m) Lentiviral Particles: sc-76158-V.

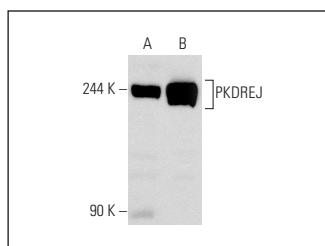
Molecular Weight of PKDREJ: 241 kDa.

Positive Controls: KNRK whole cell lysate: sc-2214 or mouse skeletal muscle extract: sc-364250.

RECOMMENDED SECONDARY REAGENTS

To ensure optimal results, the following support (secondary) reagents are recommended: 1) Western Blotting: use goat anti-rabbit IgG-HRP: sc-2004 (dilution range: 1:2000-1:100,000) or Cruz Marker™ compatible goat anti-rabbit IgG-HRP: sc-2030 (dilution range: 1:2000-1:5000), Cruz Marker™ Molecular Weight Standards: sc-2035, TBS Blotto A Blocking Reagent: sc-2333 and Western Blotting Luminol Reagent: sc-2048. 2) Immunoprecipitation: use Protein A/G PLUS-Agarose: sc-2003 (0.5 ml agarose/2.0 ml). 3) Immunofluorescence: use goat anti-rabbit IgG-FITC: sc-2012 (dilution range: 1:100-1:400) or goat anti-rabbit IgG-TR: sc-2780 (dilution range: 1:100-1:400) with UltraCruz™ Mounting Medium: sc-24941.

DATA



PKDREJ (M-86): sc-68860. Western blot analysis of PKDREJ expression in KNRK whole cell lysate (A) and mouse skeletal muscle tissue extract (B).

RESEARCH USE

For research use only, not for use in diagnostic procedures.

STORAGE

Store at 4° C, **DO NOT FREEZE**. Stable for one year from the date of shipment. Non-hazardous. No MSDS required.

PROTOCOLS

See our web site at www.scbt.com or our catalog for detailed protocols and support products.