

BLM hydrolase (H-300): sc-68888

BACKGROUND

BLM hydrolase (bleomycin hydrolase, BMH) is a 455 amino acid protein encoded by the human gene BLMH. BLM hydrolase belongs to the cysteine protease papain superfamily and the peptidase C1 family. It is a cytoplasmic cysteine peptidase commonly found as a homohexamer. It is highly conserved through evolution, however, the only known activity of the enzyme is metabolic inactivation of the glycopeptide bleomycin (BLM). BLM is an essential component of combination chemotherapy regimens for cancer.

REFERENCES

- Schwartz, D.R., Homanics, G.E., Hoyt, D.G., Klein, E., Abernethy, J. and Lazo, J.S. 1999. The neutral cysteine protease bleomycin hydrolase is essential for epidermal integrity and bleomycin resistance. *Proc. Natl. Acad. Sci. USA* 96: 4680-4685.
- Riva, P., Corrado, L., Natacci, F., Castorina, P., Wu, B.L., Schneider, G.H., Clementi, M., Tenconi, R., Korf, B.R. and Larizza, L. 2000. NF1 microdeletion syndrome: refined fish characterization of sporadic and familial deletions with locus-specific probes. *Am. J. Hum. Genet.* 66: 100-109.
- Prince, J.A., Feuk, L., Sawyer, S.L., Gottfries, J., Ricksten, A., Nägga, K., Bogdanovic, N., Blennow, K. and Brookes, A.J. 2001. Lack of replication of association findings in complex disease: an analysis of 15 polymorphisms in prior candidate genes for sporadic Alzheimer's disease. *Eur. J. Hum. Genet.* 9: 437-444.
- Bentivegna, A., Venturin, M., Gervasini, C., Corrado, L., Larizza, L. and Riva, P. 2001. Identification of duplicated genes in 17q11.2 using fish on stretched chromosomes and DNA fibers. *Hum. Genet.* 109: 48-54.
- Kim, S.J., Cox, N., Courchesne, R., Lord, C., Corsello, C., Akshoomoff, N., Guter, S., Leventhal, B.L. and Courchesne, E. 2002. Transmission disequilibrium mapping at the serotonin transporter gene (SLC6A4) region in autistic disorder. *Mol. Psychiatry* 7: 278-288.
- Montoya, S.E., Thiels, E., Card, J.P. and Lazo, J.S. 2007. Astrogliosis and behavioral changes in mice lacking the neutral cysteine protease bleomycin hydrolase. *Neuroscience* 146: 890-900.

CHROMOSOMAL LOCATION

Genetic locus: BLMH (human) mapping to 17q11.2; Blmh (mouse) mapping to 11 B5.

SOURCE

BLM hydrolase (H-300) is a rabbit polyclonal antibody raised against amino acids 1-300 mapping at the N-terminus of BLM hydrolase of human origin.

PRODUCT

Each vial contains 200 µg IgG in 1.0 ml of PBS with < 0.1% sodium azide and 0.1% gelatin.

STORAGE

Store at 4° C, ****DO NOT FREEZE****. Stable for one year from the date of shipment. Non-hazardous. No MSDS required.

APPLICATIONS

BLM hydrolase (H-300) is recommended for detection of BLM hydrolase of mouse, rat and human origin by Western Blotting (starting dilution 1:200, dilution range 1:100-1:1000), immunoprecipitation [1-2 µg per 100-500 µg of total protein (1 ml of cell lysate)], immunofluorescence (starting dilution 1:50, dilution range 1:50-1:500) and solid phase ELISA (starting dilution 1:30, dilution range 1:30-1:3000).

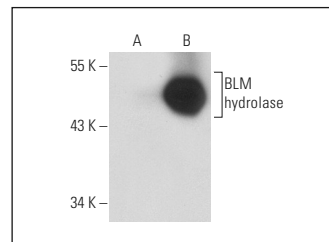
BLM hydrolase (H-300) is also recommended for detection of BLM hydrolase in additional species, including canine.

Suitable for use as control antibody for BLM hydrolase siRNA (h): sc-72654, BLM hydrolase siRNA (m): sc-72655, BLM hydrolase shRNA Plasmid (h): sc-72654-SH, BLM hydrolase shRNA Plasmid (m): sc-72655-SH, BLM hydrolase shRNA (h) Lentiviral Particles: sc-72654-V and BLM hydrolase shRNA (m) Lentiviral Particles: sc-72655-V.

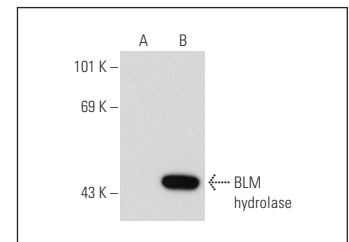
Molecular Weight of BLM hydrolase: 53 kDa.

Positive Controls: BLM hydrolase (m3): 293T Lysate: sc-125059, WEHI-3 cell lysate: sc-3815 or K-562 whole cell lysate: sc-2203.

DATA



BLM hydrolase (H-300): sc-68888. Western blot analysis of BLM hydrolase expression in non-transfected: sc-117752 (A) and mouse BLM hydrolase transfected: sc-125058 (B) 293T whole cell lysates.



BLM hydrolase (H-300): sc-68888. Western blot analysis of BLM hydrolase expression in non-transfected: sc-117752 (A) and mouse BLM hydrolase transfected: sc-125059 (B) 293T whole cell lysates.

RESEARCH USE

For research use only, not for use in diagnostic procedures.

PROTOCOLS

See our web site at www.scbt.com or our catalog for detailed protocols and support products.



Try **BLM hydrolase (F-9): sc-166777**, our highly recommended monoclonal alternative to BLM hydrolase (H-300).