

# palladin (H-100): sc-68900

## BACKGROUND

Palladin, also known as PALLD, PNCA1 or SIH002, is a 1,383 amino acid protein that localizes to both the cytoplasm and the cytoskeleton and contains 5 immunoglobulin (Ig)-like domains. Expressed as several alternatively spliced isoforms that are found in kidney, prostate, ovary and colon, palladin functions as a cytoskeletal protein that is required both for the organization of the actin cytoskeleton, as well as for the establishment of proper cell motility, cell adhesion and cell-matrix interactions. Palladin interacts with Eps8, LASP-1 and VASP and may also play a role in cytoskeletal scaffolding and actin remodeling. In response to DNA damage, palladin is subject to phosphorylation on select serine residues. Defects in the gene encoding palladin may increase genetic susceptibility to pancreatic cancer, strongly suggesting a role for palladin in tumorigenesis.

## REFERENCES

1. Parast, M.M. and Otey, C.A. 2000. Characterization of palladin, a novel protein localized to stress fibers and cell adhesions. *J. Cell Biol.* 150: 643-656.
2. Mykkänen, O.M., Grönholm, M., Rönty, M., Lalowski, M., Salmikangas, P., Suila, H. and Carpen, O. 2001. Characterization of human palladin, a micro-filament-associated protein. *Mol. Biol. Cell* 12: 3060-3073.

## CHROMOSOMAL LOCATION

Genetic locus: PALLD (human) mapping to 4q32.3; Palld (mouse) mapping to 8 B3.1.

## SOURCE

palladin (H-100) is a rabbit polyclonal antibody raised against amino acids 361-460 mapping within an internal region of palladin of human origin.

## PRODUCT

Each vial contains 200 µg IgG in 1.0 ml of PBS with < 0.1% sodium azide and 0.1% gelatin.

## APPLICATIONS

palladin (H-100) is recommended for detection of palladin of mouse, rat and human origin by Western Blotting (starting dilution 1:200, dilution range 1:100-1:1000), immunoprecipitation [1-2 µg per 100-500 µg of total protein (1 ml of cell lysate)], immunofluorescence (starting dilution 1:50, dilution range 1:50-1:500) and solid phase ELISA (starting dilution 1:30, dilution range 1:30-1:3000).

palladin (H-100) is also recommended for detection of palladin in additional species, including equine, canine and porcine.

Suitable for use as control antibody for palladin siRNA (h): sc-88986, palladin siRNA (m): sc-151999, palladin shRNA Plasmid (h): sc-88986-SH, palladin shRNA Plasmid (m): sc-151999-SH, palladin shRNA (h) Lentiviral Particles: sc-88986-V and palladin shRNA (m) Lentiviral Particles: sc-151999-V.

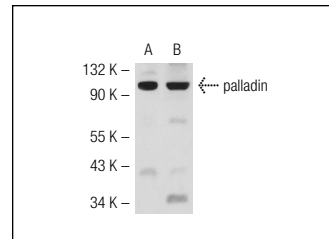
Molecular Weight of palladin: 140 kDa.

Positive Controls: 3611-RF whole cell lysate: sc-2215 or CCD-1064Sk cell lysate: sc-2263.

## RECOMMENDED SECONDARY REAGENTS

To ensure optimal results, the following support (secondary) reagents are recommended: 1) Western Blotting: use goat anti-rabbit IgG-HRP: sc-2004 (dilution range: 1:2000-1:100,000) or Cruz Marker™ compatible goat anti-rabbit IgG-HRP: sc-2030 (dilution range: 1:2000-1:5000), Cruz Marker™ Molecular Weight Standards: sc-2035, TBS Blotto A Blocking Reagent: sc-2333 and Western Blotting Luminol Reagent: sc-2048. 2) Immunoprecipitation: use Protein A/G PLUS-Agarose: sc-2003 (0.5 ml agarose/2.0 ml). 3) Immunofluorescence: use goat anti-rabbit IgG-FITC: sc-2012 (dilution range: 1:100-1:400) or goat anti-rabbit IgG-TR: sc-2780 (dilution range: 1:100-1:400) with UltraCruz™ Mounting Medium: sc-24941.

## DATA



palladin (H-100): sc-68900. Western blot analysis of palladin expression in 3611-RF (A) and CCD-1064Sk (B) whole cell lysates.

## STORAGE

Store at 4° C, \*\*DO NOT FREEZE\*\* Stable for one year from the date of shipment. Non-hazardous. No MSDS required.

## RESEARCH USE

For research use only, not for use in diagnostic procedures.

## PROTOCOLS

See our web site at [www.scbt.com](http://www.scbt.com) or our catalog for detailed protocols and support products.


 MONOS  
Satisfaction  
Guaranteed

Try **palladin (G-2): sc-166563**, our highly recommended monoclonal alternative to palladin (H-100).