

TCF-19 (A-19): sc-69024

BACKGROUND

TCF-19 (transcription factor 19), also known as SC1 or SC1-1, is a 345 amino acid protein that contains one FHA domain, a proline-rich domain and one PHD-type zinc finger. Localizing to the nucleus, TCF-19 is a growth regulated protein that is believed to function as a *trans*-activating factor with a role in the transcription of genes involved in the late stages of cell cycle progression (G₁/S transition or entry of cells into G₂ and mitosis). TCF-19 is expressed preferentially in the G₁/S phase of the cell cycle. The gene encoding TCF-19 localizes to a critical region on chromosome 6 that has been associated with psoriasis vulgaris, a disorder of the skin that is characterized by hyperproliferation of epidermal cells. This suggests that TCF-19, via its regulation of late cell cycle-specific genes, may play a role in the development of this disorder.

REFERENCES

1. Ku, D.H., et al. 1991. A new growth-regulated complementary DNA with the sequence of a putative *trans*-activating factor. *Cell Growth Differ.* 2: 179-186.
2. Krishnan, B.R., et al. 1995. Feature mapping of the HLA class I region: localization of the POU5F1 and TCF19 genes. *Genomics* 30: 53-58.
3. Goldsworthy, M., et al. 1997. Identification of new HLA class I region genes by sample sequencing. *Immunogenetics* 46: 206-212.
4. Oka, A., et al. 1999. Association analysis using refined microsatellite markers localizes a susceptibility locus for psoriasis vulgaris within a 111 kb segment telomeric to the HLA-C gene. *Hum. Mol. Genet.* 8: 2165-2170.
5. Shiina, T., et al. 1999. Genome sequencing analysis of the 1.8 Mb entire human MHC class I region. *Immunol. Rev.* 167: 193-199.

CHROMOSOMAL LOCATION

Genetic locus: TCF19 (human) mapping to 6p21.33; Tcf19 (mouse) mapping to 17 B1.

SOURCE

TCF-19 (A-19) is an affinity purified goat polyclonal antibody raised against a peptide mapping within an internal region of TCF-19 of human origin.

PRODUCT

Each vial contains 200 µg IgG in 1.0 ml of PBS with < 0.1% sodium azide and 0.1% gelatin. Also available as TransCruz reagent for Gel Supershift and ChIP applications, sc-69024 X, 200 µg/0.1 ml.

Blocking peptide available for competition studies, sc-69024 P, (100 µg peptide in 0.5 ml PBS containing < 0.1% sodium azide and 0.2% stabilizer protein).

STORAGE

Store at 4° C, ****DO NOT FREEZE****. Stable for one year from the date of shipment. Non-hazardous. No MSDS required.

APPLICATIONS

TCF-19 (A-19) is recommended for detection of TCF-19 of mouse, rat and human origin by Western Blotting (starting dilution 1:200, dilution range 1:100-1:1000), immunoprecipitation [1-2 µg per 100-500 µg of total protein (1 ml of cell lysate)], immunofluorescence (starting dilution 1:50, dilution range 1:50-1:500) and solid phase ELISA (starting dilution 1:30, dilution range 1:30-1:3000).

TCF-19 (A-19) is also recommended for detection of TCF-19 in additional species, including equine, canine and porcine.

Suitable for use as control antibody for TCF19 siRNA (h): sc-63113, TCF19 siRNA (m): sc-63114, TCF19 shRNA Plasmid (h): sc-63113-SH, TCF19 shRNA Plasmid (m): sc-63114-SH, TCF19 shRNA (h) Lentiviral Particles: sc-63113-V and TCF19 shRNA (m) Lentiviral Particles: sc-63114-V.

TCF-19 (A-19) X TransCruz antibody is recommended for Gel Supershift and ChIP applications.

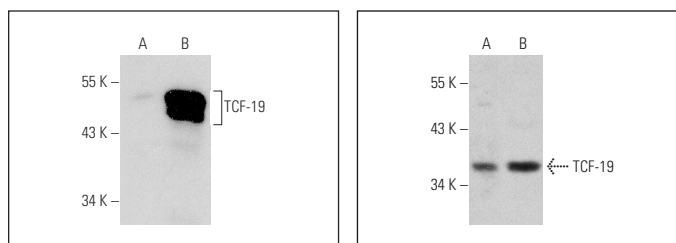
Molecular Weight of TCF-19: 37 kDa.

Positive Controls: HeLa nuclear extract: sc-2120, A-431 nuclear extract: sc-2122 or TCF-19 (h): 293T Lysate: sc-175941.

RECOMMENDED SECONDARY REAGENTS

To ensure optimal results, the following support (secondary) reagents are recommended: 1) Western Blotting: use donkey anti-goat IgG-HRP: sc-2020 (dilution range: 1:2000-1:100,000) or Cruz Marker™ compatible donkey anti-goat IgG-HRP: sc-2033 (dilution range: 1:2000-1:5000), Cruz Marker™ Molecular Weight Standards: sc-2035, TBS Blotto A Blocking Reagent: sc-2333 and Western Blotting Luminol Reagent: sc-2048. 2) Immunoprecipitation: use Protein A/G PLUS-Agarose: sc-2003 (0.5 ml agarose/2.0 ml). 3) Immunofluorescence: use donkey anti-goat IgG-FITC: sc-2024 (dilution range: 1:100-1:400) or donkey anti-goat IgG-TR: sc-2783 (dilution range: 1:100-1:400) with UltraCruz™ Mounting Medium: sc-24941.

DATA



TCF-19 (A-19): sc-69024. Western blot analysis of TCF-19 expression in non-transfected: sc-117752 (A) and human TCF-19 transfected: sc-175941 (B) 293T whole cell lysates.

TCF-19 (A-19): sc-69024. Western blot analysis of TCF-19 expression in HeLa (A) and A-431 (B) nuclear extracts.

RESEARCH USE

For research use only, not for use in diagnostic procedures.