

Prickle1 (C-16): sc-69225

BACKGROUND

Prickle1, also known as RILP or EPM1B, is an 831 amino acid protein that contains one PET domain and 3 LIM zinc-binding domains and localizes to the cytoplasm, as well as to the nuclear membrane. Expressed at higher levels in placenta and at lower levels in liver, brain, kidney, lung and pancreas, Prickle1 is thought to function as a nuclear receptor that interacts with NRSF, a silencer protein that binds the DNA sequence element NRSE (neuron-restrictive silencer element). Defects in the gene encoding Prickle1 are associated with autosomal recessive progressive myoclonic epilepsy-1B, which is characterized by quick jerks of the arms, shoulders or legs. The gene encoding Prickle1 maps to human chromosome 12, which encodes over 1,100 genes and comprises approximately 4.5% of the human genome.

REFERENCES

- Jenny, A., et al. 2003. Prickle and strabismus form a functional complex to generate a correct axis during planar cell polarity signaling. *EMBO J.* 22: 4409-4420.
- Shimojo, M. and Hersh, L.B. 2003. REST/NRSF-interacting LIM domain protein, a putative nuclear translocation receptor. *Mol. Cell. Biol.* 23: 9025-9031.

CHROMOSOMAL LOCATION

Genetic locus: PRICKLE1 (human) mapping to 12q12; Prickle1 (mouse) mapping to 15 E3.

SOURCE

Prickle1 (C-16) is an affinity purified goat polyclonal antibody raised against a peptide mapping near the C-terminus of Prickle1 of human origin.

PRODUCT

Each vial contains 200 µg IgG in 1.0 ml of PBS with < 0.1% sodium azide and 0.1% gelatin.

Blocking peptide available for competition studies, sc-69225 P, (100 µg peptide in 0.5 ml PBS containing < 0.1% sodium azide and 0.2% BSA).

APPLICATIONS

Prickle1 (C-16) is recommended for detection of Prickle1 of mouse, rat and human origin by Western Blotting (starting dilution 1:200, dilution range 1:100-1:1000), immunoprecipitation [1-2 µg per 100-500 µg of total protein (1 ml of cell lysate)], immunofluorescence (starting dilution 1:50, dilution range 1:50-1:500), immunohistochemistry (including paraffin-embedded sections) (starting dilution 1:50, dilution range 1:50-1:500) and solid phase ELISA (starting dilution 1:30, dilution range 1:30-1:3000).

Suitable for use as control antibody for Prickle1 siRNA (h): sc-76247, Prickle1 siRNA (m): sc-76248, Prickle1 shRNA Plasmid (h): sc-76247-SH, Prickle1 shRNA Plasmid (m): sc-76248-SH, Prickle1 shRNA (h) Lentiviral Particles: sc-76247-V and Prickle1 shRNA (m) Lentiviral Particles: sc-76248-V.

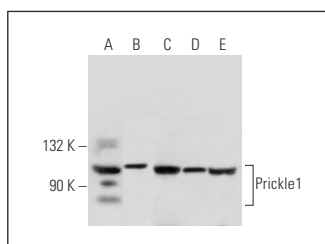
Molecular Weight of Prickle1: 100 kDa.

Positive Controls: human bladder extract: sc-363751, human breast extract: sc-363753 or MDA-MB-468 cell lysate: sc-2282.

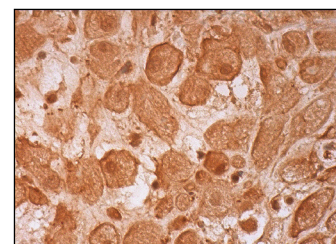
RECOMMENDED SECONDARY REAGENTS

To ensure optimal results, the following support (secondary) reagents are recommended: 1) Western Blotting: use donkey anti-goat IgG-HRP: sc-2020 (dilution range: 1:2000-1:100,000) or Cruz Marker™ compatible donkey anti-goat IgG-HRP: sc-2033 (dilution range: 1:2000-1:5000), Cruz Marker™ Molecular Weight Standards: sc-2035, TBS Blotto A Blocking Reagent: sc-2333 and Western Blotting Luminol Reagent: sc-2048. 2) Immunoprecipitation: use Protein A/G PLUS-Agarose: sc-2003 (0.5 ml agarose/2.0 ml). 3) Immunofluorescence: use donkey anti-goat IgG-FITC: sc-2024 (dilution range: 1:100-1:400) or donkey anti-goat IgG-TR: sc-2783 (dilution range: 1:100-1:400) with UltraCruz™ Mounting Medium: sc-24941. 4) Immunohistochemistry: use ImmunoCruz™: sc-2053 or ABC: sc-2023 goat IgG Staining Systems.

DATA



Prickle1 (C-16): sc-69225. Western blot analysis of Prickle1 expression in human bladder (A) and human breast (B) tissue extracts and MDA-MB-468 (C), HeLa (D) and K-562 (E) whole cell lysates.



Prickle1 (C-16): sc-69225. Immunoperoxidase staining of formalin fixed, paraffin-embedded human placenta tissue showing cytoplasmic, membrane and nuclear staining of decidual cells.

STORAGE

Store at 4° C, **DO NOT FREEZE**. Stable for one year from the date of shipment. Non-hazardous. No MSDS required.

RESEARCH USE

For research use only, not for use in diagnostic procedures.

PROTOCOLS

See our web site at www.scbt.com or our catalog for detailed protocols and support products.


 MONOS
Satisfaction
Guaranteed

Try **Prickle1 (F-5): sc-393034**, our highly recommended monoclonal alternative to Prickle1 (C-16).