

CENP-R (G-18): sc-69248

BACKGROUND

CENP-R (centromere protein R), also known as CENPR, ITGB3BP (Integrin β 3 binding protein), β 3-endonexin, NRIF3 (nuclear receptor-interacting factor 3) or TAP20, is a widely expressed protein that contains a DD1 or RepD1 domain and an LXXLL motif. Induced by estrogen, CENP-R is believed to function as a nuclear receptor coactivator. It also associates with the CENP-A-CAD complex which is involved in mitotic progression, the assembly of kinetochore proteins and chromosome segregation. A number of isoforms exist for CENP-R due to alternative splicing events. Isoform 1 localizes to the nucleus at the centromere; isoform 2, also known as EnL, En-L or long isoform, localizes to the nucleus; isoform 3, also known as EnS, En-S or short isoform, localizes predominantly to the nucleus but can also be found in the cytoplasm; and isoform 4 predominantly localizes to the cytoplasm. Isoform 3 of CENP-R binds to the cytoplasmic tail of Integrin β 3 and can activate Integrin α IIb/ β 3.

REFERENCES

- Li, D., et al. 2001. Domain structure of the NRIF3 family of coregulators suggests potential dual roles in transcriptional regulation. *Mol. Cell. Biol.* 21: 8371-8384.
- Besta, F., et al. 2002. Role of β 3-endonexin in the regulation of NF κ B-dependent expression of urokinase-type plasminogen activator receptor. *J. Cell Sci.* 115: 3879-3888.
- Online Mendelian Inheritance in Man, OMIM[™]. 2002. Johns Hopkins University, Baltimore, MD. MIM Number: 605494. World Wide Web URL: <http://www.ncbi.nlm.nih.gov/omim/>
- Li, D., et al. 2004. The NRIF3 family of transcriptional coregulators induces rapid and profound apoptosis in breast cancer cells. *Mol. Cell. Biol.* 24: 3838-3848.
- Talukder, A.H., et al. 2004. Metastasis-associated protein 1 interacts with NRIF3, an estrogen-inducible nuclear receptor coregulator. *Mol. Cell. Biol.* 24: 6581-6591.
- Sadoul, K., et al. 2005. Proteolysis leads to the appearance of the long form of β 3-endonexin in human platelets. *Exp. Cell Res.* 305: 427-435.
- Okada, M., et al. 2006. The CENP-H-I complex is required for the efficient incorporation of newly synthesized CENP-A into centromeres. *Nat. Cell Biol.* 8: 446-457.
- Foltz, D.R., et al. 2006. The human CENP-A centromeric nucleosome-associated complex. *Nat. Cell Biol.* 8: 458-469.

CHROMOSOMAL LOCATION

Genetic locus: Itgb3bp (mouse) mapping to 4 C6.

SOURCE

CENP-R (G-18) is an affinity purified goat polyclonal antibody raised against a peptide mapping within an internal region of CENP-R of mouse origin.

STORAGE

Store at 4° C, ****DO NOT FREEZE****. Stable for one year from the date of shipment. Non-hazardous. No MSDS required.

PRODUCT

Each vial contains 200 μ g IgG in 1.0 ml of PBS with < 0.1% sodium azide and 0.1% gelatin.

Blocking peptide available for competition studies, sc-69248 P, (100 μ g peptide in 0.5 ml PBS containing < 0.1% sodium azide and 0.2% BSA).

APPLICATIONS

CENP-R (G-18) is recommended for detection of CENP-R of mouse and rat origin by Western Blotting (starting dilution 1:200, dilution range 1:100-1:1000), immunofluorescence (starting dilution 1:50, dilution range 1:50-1:500), immunohistochemistry (including paraffin-embedded sections) (starting dilution 1:50, dilution range 1:50-1:500) and solid phase ELISA (starting dilution 1:30, dilution range 1:30-1:3000).

Suitable for use as control antibody for CENP-R siRNA (m): sc-72863, CENP-R shRNA Plasmid (m): sc-72863-SH and CENP-R shRNA (m) Lentiviral Particles: sc-72863-V.

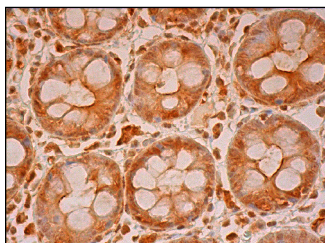
Molecular Weight of CENP-R short isoform: 13 kDa.

Molecular Weight of CENP-R long isoform: 20 kDa.

RECOMMENDED SECONDARY REAGENTS

To ensure optimal results, the following support (secondary) reagents are recommended: 1) Western Blotting: use donkey anti-goat IgG-HRP: sc-2020 (dilution range: 1:2000-1:100,000) or Cruz Marker[™] compatible donkey anti-goat IgG-HRP: sc-2033 (dilution range: 1:2000-1:5000), Cruz Marker[™] Molecular Weight Standards: sc-2035, TBS Blotto A Blocking Reagent: sc-2333 and Western Blotting Luminol Reagent: sc-2048. 2) Immunofluorescence: use donkey anti-goat IgG-FITC: sc-2024 (dilution range: 1:100-1:400) or donkey anti-goat IgG-TR: sc-2783 (dilution range: 1:100-1:400) with UltraCruz[™] Mounting Medium: sc-24941. 3) Immunohistochemistry: use ImmunoCruz[™]: sc-2053 or ABC: sc-2023 goat IgG Staining Systems.

DATA



CENP-R (G-18): sc-69248. Immunoperoxidase staining of formalin fixed, paraffin-embedded human colon tissue showing nuclear and cytoplasmic staining of glandular cells and nuclear staining of endothelial cells.

RESEARCH USE

For research use only, not for use in diagnostic procedures.