

# CENP-R (S-19): sc-69251

## BACKGROUND

CENP-R (centromere protein R), also known as CENPR, ITGB3BP (Integrin  $\beta$ 3 binding protein),  $\beta$ 3-endonexin, NRIF3 (nuclear receptor-interacting factor 3) or TAP20, is a widely expressed protein that contains a DD1 or RepD1 domain and an LXXLL motif. Induced by estrogen, CENP-R is believed to function as a nuclear receptor coactivator. It also associates with the CENP-A-CAD complex which is involved in mitotic progression, the assembly of kinetochore proteins and chromosome segregation. A number of isoforms exist for CENP-R due to alternative splicing events. Isoform 1 localizes to the nucleus at the centromere; isoform 2, also known as EnL, En-L or long isoform, localizes to the nucleus; isoform 3, also known as EnS, En-S or short isoform, localizes predominantly to the nucleus but can also be found in the cytoplasm; and isoform 4 predominantly localizes to the cytoplasm. Isoform 3 of CENP-R binds to the cytoplasmic tail of Integrin  $\beta$ 3 and can activate Integrin  $\alpha$ IIb/ $\beta$ 3.

## CHROMOSOMAL LOCATION

Genetic locus: ITGB3BP (human) mapping to 1p31.3.

## SOURCE

CENP-R (S-19) is an affinity purified goat polyclonal antibody raised against a peptide mapping near the N-terminus of CENP-R of human origin.

## PRODUCT

Each vial contains 200  $\mu$ g IgG in 1.0 ml of PBS with < 0.1% sodium azide and 0.1% gelatin.

Blocking peptide available for competition studies, sc-69251 P, (100  $\mu$ g peptide in 0.5 ml PBS containing < 0.1% sodium azide and 0.2% BSA).

## STORAGE

Store at 4° C, **\*\*DO NOT FREEZE\*\***. Stable for one year from the date of shipment. Non-hazardous. No MSDS required.

## APPLICATIONS

CENP-R (S-19) is recommended for detection of CENP-R of human origin by Western Blotting (starting dilution 1:200, dilution range 1:100-1:1000), immunofluorescence (starting dilution 1:50, dilution range 1:50-1:500), immunohistochemistry (including paraffin-embedded sections) (starting dilution 1:50, dilution range 1:50-1:500) and solid phase ELISA (starting dilution 1:30, dilution range 1:30-1:3000).

CENP-R (S-19) is also recommended for detection of CENP-R in additional species, including canine.

Suitable for use as control antibody for CENP-R siRNA (h): sc-72862, CENP-R shRNA Plasmid (h): sc-72862-SH and CENP-R shRNA (h) Lentiviral Particles: sc-72862-V.

Molecular Weight of CENP-R short isoform: 13 kDa.

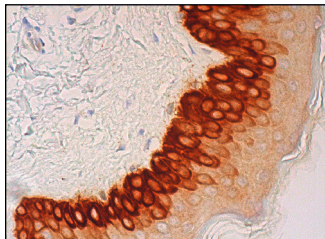
Molecular Weight of CENP-R long isoform: 20 kDa.

Positive Controls: A-431 whole cell lysate: sc-2201.

## RECOMMENDED SECONDARY REAGENTS

To ensure optimal results, the following support (secondary) reagents are recommended: 1) Western Blotting: use donkey anti-goat IgG-HRP: sc-2020 (dilution range: 1:2000-1:100,000) or Cruz Marker™ compatible donkey anti-goat IgG-HRP: sc-2033 (dilution range: 1:2000-1:5000), Cruz Marker™ Molecular Weight Standards: sc-2035, TBS Blotto A Blocking Reagent: sc-2333 and Western Blotting Luminol Reagent: sc-2048. 2) Immunofluorescence: use donkey anti-goat IgG-FITC: sc-2024 (dilution range: 1:100-1:400) or donkey anti-goat IgG-TR: sc-2783 (dilution range: 1:100-1:400) with UltraCruz™ Mounting Medium: sc-24941. 3) Immunohistochemistry: use ImmunoCruz™: sc-2053 or ABC: sc-2023 goat IgG Staining Systems.

## DATA



CENP-R (S-19): sc-69251. Immunoperoxidase staining of formalin fixed, paraffin-embedded human skin tissue showing cytoplasmic staining of epidermal cells.

## RESEARCH USE

For research use only, not for use in diagnostic procedures.

## PROTOCOLS

See our web site at [www.scbt.com](http://www.scbt.com) or our catalog for detailed protocols and support products.

**MONOS**  
Satisfaction  
Guaranteed

Try **CENP-R (G-78): sc-101092**, our highly recommended monoclonal alternative to CENP-R (S-19).