

SHPRH (Y-20): sc-69324

BACKGROUND

Ubiquitination is an important mechanism through which three classes of enzymes act in concert to target short-lived or abnormal proteins for destruction. The three classes of enzymes involved in ubiquitination are the ubiquitin-activating enzymes (E1s), the ubiquitin-conjugating enzymes (E2s) and the ubiquitin-protein ligases (E3s). SHPRH (SNF2 histone linker PHD RING helicase) is a 1,683 amino acid protein that contains one RING-type zinc finger, one PHD-type zinc finger, one histone H1 domain and one helicase C-terminal and ATP-binding domain. Expressed in a broad range of tissues and existing as a homodimer, SHPRH functions as an E3 ubiquitin-protein ligase that is involved in DNA repair mechanisms. Human SHPRH exists as multiple alternatively spliced isoforms and shares 86% amino acid identity with its mouse counterpart, suggesting a conserved role between species.

CHROMOSOMAL LOCATION

Genetic locus: SHPRH (human) mapping to 6q24.3; Shprh (mouse) mapping to 10 A1.

SOURCE

SHPRH (Y-20) is an affinity purified goat polyclonal antibody raised against a peptide mapping within an internal region of SHPRH of human origin.

PRODUCT

Each vial contains 200 µg IgG in 1.0 ml of PBS with < 0.1% sodium azide and 0.1% gelatin.

Blocking peptide available for competition studies, sc-69324 P, (100 µg peptide in 0.5 ml PBS containing < 0.1% sodium azide and 0.2% BSA).

Available as TransCruz reagent for Gel Supershift and ChIP applications, sc-69324 X, 200 µg/0.1 ml.

APPLICATIONS

SHPRH (Y-20) is recommended for detection of SHPRH of mouse, rat and human origin by Western Blotting (starting dilution 1:200, dilution range 1:100-1:1000), immunoprecipitation [1-2 µg per 100-500 µg of total protein (1 ml of cell lysate)], immunofluorescence (starting dilution 1:50, dilution range 1:50-1:500) and solid phase ELISA (starting dilution 1:30, dilution range 1:30-1:3000).

SHPRH (Y-20) is also recommended for detection of SHPRH in additional species, including canine, bovine, porcine and avian.

Suitable for use as control antibody for SHPRH siRNA (h): sc-76493, SHPRH siRNA (m): sc-76494, SHPRH shRNA Plasmid (h): sc-76493-SH, SHPRH shRNA Plasmid (m): sc-76494-SH, SHPRH shRNA (h) Lentiviral Particles: sc-76493-V and SHPRH shRNA (m) Lentiviral Particles: sc-76494-V.

SHPRH (Y-20) X TransCruz antibody is recommended for Gel Supershift and ChIP applications.

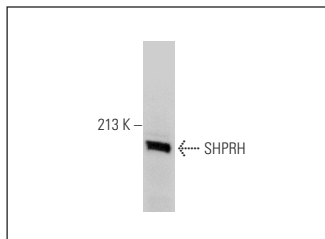
Molecular Weight of SHPRH: 200 kDa.

Positive Controls: HeLa whole cell lysate: sc-2200.

RECOMMENDED SECONDARY REAGENTS

To ensure optimal results, the following support (secondary) reagents are recommended: 1) Western Blotting: use donkey anti-goat IgG-HRP: sc-2020 (dilution range: 1:2000-1:100,000) or Cruz Marker™ compatible donkey anti-goat IgG-HRP: sc-2033 (dilution range: 1:2000-1:5000), Cruz Marker™ Molecular Weight Standards: sc-2035, TBS Blotto A Blocking Reagent: sc-2333 and Western Blotting Luminol Reagent: sc-2048. 2) Immunoprecipitation: use Protein A/G PLUS-Agarose: sc-2003 (0.5 ml agarose/2.0 ml). 3) Immunofluorescence: use donkey anti-goat IgG-FITC: sc-2024 (dilution range: 1:100-1:400) or donkey anti-goat IgG-TR: sc-2783 (dilution range: 1:100-1:400) with UltraCruz™ Mounting Medium: sc-24941.

DATA



SHPRH (Y-20): sc-69324. Western blot analysis of SHPRH expression in HeLa whole cell lysate.

STORAGE

Store at 4° C, ****DO NOT FREEZE****. Stable for one year from the date of shipment. Non-hazardous. No MSDS required.

RESEARCH USE

For research use only, not for use in diagnostic procedures.

PROTOCOLS

See our web site at www.scbt.com or our catalog for detailed protocols and support products.

MONOS
Satisfaction
Guaranteed

Try **SHPRH (E-10): sc-514395**, our highly recommended monoclonal alternative to SHPRH (Y-20).