

P-Selectin (C-20): sc-6941

BACKGROUND

Selectins, also designated CD62 antigens, comprise a family of carbohydrate-binding proteins involved in mediating cellular interactions with leukocytes. L-Selectin (also designated LECAM-1 or CD62L) is expressed on the majority of B and naive T cells and on most monocytes, neutrophils and eosinophils. L-Selectin interacts with specific carbohydrates expressed by activated endothelial cells. P-Selectin (also designated GMP-140 or CD62P), expressed on activated platelets and endothelial cells, and E-Selectin (also designated ELMA-1 or CD62E), expressed on endothelial cells, exhibit overlapping ligand specificities. Both recognize sialyl-Le^x as a ligand and bind to specific carbohydrates on neutrophils and monocytes.

CHROMOSOMAL LOCATION

Genetic locus: SELP (human) mapping to 1q24.2; Selp (mouse) mapping to 1 H2.2.

SOURCE

P-Selectin (C-20) is an affinity purified goat polyclonal antibody raised against a peptide mapping at the C-terminus of P-Selectin of human origin.

PRODUCT

Each vial contains 200 µg IgG in 1.0 ml of PBS with < 0.1% sodium azide and 0.1% gelatin.

Blocking peptide available for competition studies, sc-6941 P, (100 µg peptide in 0.5 ml PBS containing < 0.1% sodium azide and 0.2% BSA).

APPLICATIONS

P-Selectin (C-20) is recommended for detection of P-Selectin of mouse, rat and human origin by Western Blotting (starting dilution 1:200, dilution range 1:100-1:1000), immunoprecipitation [1-2 µg per 100-500 µg of total protein (1 ml of cell lysate)], immunofluorescence (starting dilution 1:50, dilution range 1:50-1:500), immunohistochemistry (including paraffin-embedded sections) (starting dilution 1:50, dilution range 1:50-1:500) and solid phase ELISA (starting dilution 1:30, dilution range 1:30-1:3000).

P-Selectin (C-20) is also recommended for detection of P-Selectin in additional species, including equine, canine, bovine and porcine.

Suitable for use as control antibody for P-Selectin siRNA (h): sc-29421, P-Selectin siRNA (m): sc-36136, P-Selectin shRNA Plasmid (h): sc-29421-SH, P-Selectin shRNA Plasmid (m): sc-36136-SH, P-Selectin shRNA (h) Lentiviral Particles: sc-29421-V and P-Selectin shRNA (m) Lentiviral Particles: sc-36136-V.

Molecular Weight of P-Selectin: 140 kDa.

Positive Controls: WEHI-231 whole cell lysate: sc-2213, human platelet whole cell lysate: sc-363773 or P-Selectin (h): 293T Lysate: sc-114655.

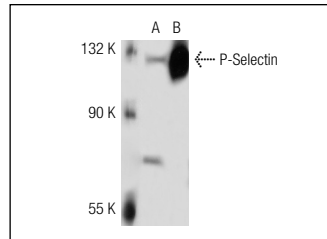
STORAGE

Store at 4° C, ****DO NOT FREEZE****. Stable for one year from the date of shipment. Non-hazardous. No MSDS required.

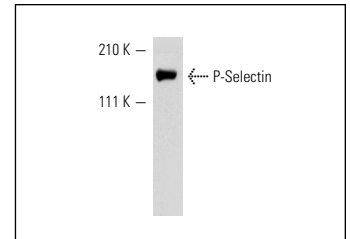
RESEARCH USE

For research use only, not for use in diagnostic procedures.

DATA



P-Selectin (C-20): sc-6941. Western blot analysis of P-Selectin expression in non-transfected: sc-117752 (A) and human P-Selectin transfected: sc-114655 (B) 293T whole cell lysates.



P-Selectin (C-20): sc-6941. Western blot analysis of P-Selectin expression in human platelet extract.

SELECT PRODUCT CITATIONS

- Shirakawa, R., et al. 2000. Small GTPase Rab 4 regulates Ca²⁺-induced α-granule secretion in platelets. *J. Biol. Chem.* 275: 33844-33849.
- Hu, W., et al. 2010. The critical roles of platelet activation and reduced NO bioavailability in fatal pulmonary arterial hypertension in a murine hemolysis model. *Blood* 116: 1613-1622.
- Di Paola, R., et al. 2010. PD98059, a specific MAP kinase inhibitor, attenuates multiple organ dysfunction syndrome/failure (MODS) induced by zymosan in mice. *Pharmacol. Res.* 61: 175-187.
- Xiping, Z., et al. 2010. Influence of dexamethasone on the expression levels of P-selectin protein in multiple organs of rats with severe acute pancreatitis. *Inflamm. Res.* 59: 31-39.
- Cerecedo, D., et al. 2010. Actin filaments and microtubule dual-granule transport in human adhered platelets: the role of α-dystrobrevins. *Br. J. Haematol.* 149: 124-136.
- Alexandru, N., et al. 2011. Platelet activation in hypertension associated with hypercholesterolemia: effects of irbesartan. *J. Thromb. Haemost.* 9: 173-184.
- Impellizzeri, D., et al. 2011. CGS 21680, an agonist of the adenosine (A_{2A}) receptor, decreases acute lung inflammation. *Eur. J. Pharmacol.* 668: 305-316.
- Mandalari, G., et al. 2011. Natural almond skin reduced oxidative stress and inflammation in an experimental model of inflammatory bowel disease. *Int. Immunopharmacol.* 11: 915-924.


 MONOS
Satisfaction
Guaranteed

Try **P-Selectin (CTB201): sc-8419** or **P-Selectin (H-2): sc-271267**, our highly recommended monoclonal alternatives to P-Selectin (C-20). Also, for AC, HRP, FITC, PE, Alexa Fluor® 488 and Alexa Fluor® 647 conjugates, see **P-Selectin (CTB201): sc-8419**.