

# P-Selectin (M-20): sc-6943

## BACKGROUND

Selectins, also designated CD62 antigens, comprise a family of carbohydrate-binding proteins involved in mediating cellular interactions with leukocytes. L-selectin (also designated LECAM-1 or CD62L) is expressed on the majority of B and naive T cells and on most monocytes, neutrophils and eosinophils. L-selectin interacts with specific carbohydrates expressed by activated endothelial cells. P-selectin (also designated GMP-140 or CD62P), expressed on activated platelets and endothelial cells, a3/18/2004 and E-selectin (also designated ELMA-1 or CD62E), expressed on endothelial cells, exhibit overlapping ligand specificities. Both recognize sialyl-Le<sup>x</sup> as a ligand and bind to specific carbohydrates on neutrophils and monocytes.

## CHROMOSOMAL LOCATION

Genetic locus: SELP (human) mapping to 1q24.2; Selp (mouse) mapping to 1 H2.2.

## SOURCE

P-Selectin (M-20) is an affinity purified goat polyclonal antibody raised against a peptide mapping at the C-terminus of P-Selectin of mouse origin.

## PRODUCT

Each vial contains 200 µg IgG in 1.0 ml of PBS with < 0.1% sodium azide and 0.1% gelatin.

Blocking peptide available for competition studies, sc-6943 P, (100 µg peptide in 0.5 ml PBS containing < 0.1% sodium azide and 0.2% BSA).

## APPLICATIONS

P-Selectin (M-20) is recommended for detection of P-Selectin of mouse, rat and human origin by Western Blotting (starting dilution 1:200, dilution range 1:100-1:1000), immunoprecipitation [1-2 µg per 100-500 µg of total protein (1 ml of cell lysate)], immunofluorescence (starting dilution 1:50, dilution range 1:50-1:500), immunohistochemistry (including paraffin-embedded sections) (starting dilution 1:50, dilution range 1:50-1:500) and solid phase ELISA (starting dilution 1:30, dilution range 1:30-1:3000).

P-Selectin (M-20) is also recommended for detection of P-Selectin in additional species, including canine and bovine.

Suitable for use as control antibody for P-Selectin siRNA (h): sc-29421, P-Selectin siRNA (m): sc-36136, P-Selectin shRNA Plasmid (h): sc-29421-SH, P-Selectin shRNA Plasmid (m): sc-36136-SH, P-Selectin shRNA (h) Lentiviral Particles: sc-29421-V and P-Selectin shRNA (m) Lentiviral Particles: sc-36136-V.

Molecular Weight of P-Selectin: 140 kDa

Positive Controls: WEHI-231 whole cell lysate: sc-2213, human platelet whole cell lysate: sc-363773 or P-Selectin (h): 293T lysate: sc-114655.

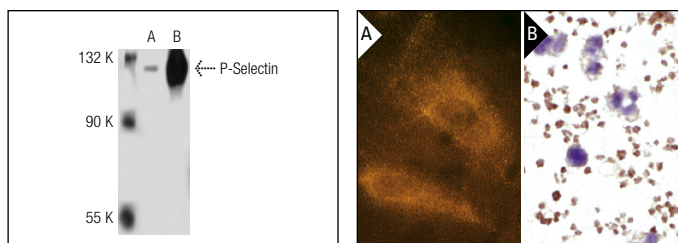
## STORAGE

Store at 4° C, **\*\*DO NOT FREEZE\*\***. Stable for one year from the date of shipment. Non-hazardous. No MSDS required.

## RESEARCH USE

For research use only, not for use in diagnostic procedures.

## DATA



P-Selectin (M-20): sc-6943. Western blot analysis of P-Selectin expression in non-transfected: sc-117752 (A) and human P-Selectin transfected: sc-114655 (B) 293T whole cell lysates.

P-Selectin (M-20): sc-6943. Rhodamine immunofluorescence staining of methanol-fixed HUV-EC-C cells showing membrane localization (A). Immunoperoxidase staining of formalin-fixed human platelets and white blood cells showing membrane staining of platelets (B).

## SELECT PRODUCT CITATIONS

- Nyska, A., et al. 2003. Ocular expression of vascular cell adhesion molecule (VCAM-1) in 2-butoxyethanol-induced hemolysis and thrombosis in female rats. *Exp. Toxicol. Pathol.* 55: 231-236.
- Rouzet, F., et al. 2008. Technetium 99m-labeled annexin V scintigraphy of platelet activation in vegetations of experimental endocarditis. *Circulation* 117: 781-789.
- Sood, R., et al. 2008. Maternal Par4 and platelets contribute to defective placenta formation in mouse embryos lacking thrombomodulin. *Blood* 112: 585-591.
- Kiris, I., et al. 2009. Iloprost downregulates expression of adhesion molecules and reduces renal injury induced by abdominal aortic ischemia-reperfusion. *Ann. Vasc. Surg.* 23: 212-223.
- Wang, Y., et al. 2011. Pleiotropic platelet defects in mice with disrupted FOG1-NuRD interaction. *Blood* 118: 6183-6191.
- Rouzet, F., et al. 2011. Radiolabeled fucoidan as a p-selectin targeting agent for *in vivo* imaging of platelet-rich thrombus and endothelial activation. *J. Nucl. Med.* 52: 1433-1440.
- Huang, Z.G., et al. 2012. Vitamin E ameliorates ox-LDL-induced foam cells formation through modulating the activities of oxidative stress-induced NFκB pathway. *Mol. Cell. Biochem.* 363: 11-19.

## PROTOCOLS

See our web site at [www.scbt.com](http://www.scbt.com) or our catalog for detailed protocols and support products.



Try **P-Selectin (CTB201): sc-8419** or **P-Selectin (H-2): sc-271267**, our highly recommended monoclonal alternatives to P-Selectin (M-20). Also, for AC, HRP, FITC, PE, Alexa Fluor<sup>®</sup> 488 and Alexa Fluor<sup>®</sup> 647 conjugates, see **P-Selectin (CTB201): sc-8419**.