

L-Selectin (N-18): sc-6946

BACKGROUND

Selectins, also designated CD62 antigens, comprise a family of carbohydrate-binding proteins involved in mediating cellular interactions with leukocytes. L-Selectin (also designated LECAM-1 or CD62L) is expressed on the majority of B and naive T cells and on most monocytes, neutrophils and eosinophils. L-Selectin interacts with specific carbohydrates expressed by activated endothelial cells. P-Selectin (also designated GMP-140 or CD62P), expressed on activated platelets and endothelial cells, and E-Selectin (also designated ELMA-1 or CD62E), expressed on endothelial cells, exhibit overlapping ligand specificities. Both recognize sialyl-Le^x as a ligand and bind to specific carbohydrates on neutrophils and monocytes.

REFERENCES

1. Varki, A. 1994. Selectin ligands. *Proc. Natl. Acad. Sci. USA* 91: 7390-7397.
2. Tedder, T.F., et al. 1995. The selectins: vascular adhesion molecules. *FASEB J.* 10: 866-873.
3. Lasky, L.A. 1995. Selectin-carbohydrate interactions and the initiation of the inflammatory response. *Annu. Rev. Biochem.* 64: 113-139.

CHROMOSOMAL LOCATION

Genetic locus: SELL (human) mapping to 1q24.2; Sell (mouse) mapping to 1 H2.2.

SOURCE

L-Selectin (N-18) is an affinity purified goat polyclonal antibody raised against a peptide mapping at the N-terminus of L-Selectin of human origin.

PRODUCT

Each vial contains 200 µg IgG in 1.0 ml of PBS with < 0.1% sodium azide and 0.1% gelatin.

Blocking peptide available for competition studies, sc-6946 P, (100 µg peptide in 0.5 ml PBS containing < 0.1% sodium azide and 0.2% BSA).

APPLICATIONS

L-Selectin (N-18) is recommended for detection of L-Selectin of mouse, rat and human origin by Western Blotting (starting dilution 1:200, dilution range 1:100-1:1000), immunoprecipitation [1-2 µg per 100-500 µg of total protein (1 ml of cell lysate)], immunofluorescence (starting dilution 1:50, dilution range 1:50-1:500) and solid phase ELISA (starting dilution 1:30, dilution range 1:30-1:3000).

Suitable for use as control antibody for L-Selectin siRNA (h): sc-35770, L-Selectin siRNA (m): sc-35771, L-Selectin shRNA Plasmid (h): sc-35770-SH, L-Selectin shRNA Plasmid (m): sc-35771-SH, L-Selectin shRNA (h) Lentiviral Particles: sc-35770-V and L-Selectin shRNA (m) Lentiviral Particles: sc-35771-V.

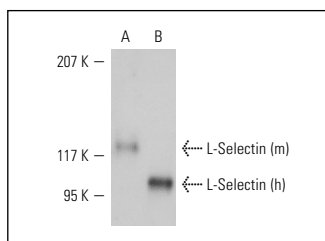
Molecular Weight of L-Selectin: 81 kDa.

Positive Controls: mouse heart extract: sc-2254 or Jurkat whole cell lysate: sc-2204.

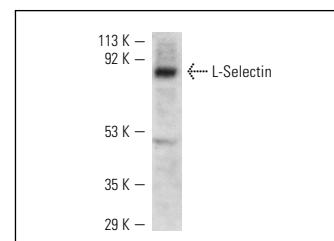
RECOMMENDED SECONDARY REAGENTS

To ensure optimal results, the following support (secondary) reagents are recommended: 1) Western Blotting: use donkey anti-goat IgG-HRP: sc-2020 (dilution range: 1:2000-1:100,000) or Cruz Marker™ compatible donkey anti-goat IgG-HRP: sc-2033 (dilution range: 1:2000-1:5000), Cruz Marker™ Molecular Weight Standards: sc-2035, TBS Blotto A Blocking Reagent: sc-2333 and Western Blotting Luminol Reagent: sc-2048. 2) Immunoprecipitation: use Protein A/G PLUS-Agarose: sc-2003 (0.5 ml agarose/2.0 ml). 3) Immunofluorescence: use donkey anti-goat IgG-FITC: sc-2024 (dilution range: 1:100-1:400) or donkey anti-goat IgG-TR: sc-2783 (dilution range: 1:100-1:400) with UltraCruz™ Mounting Medium: sc-24941.

DATA



L-Selectin (N-18): sc-6946. Western blot analysis of mouse (A) and human (B) recombinant L-Selectin/Fc Chimera under reducing conditions.



L-Selectin (N-18): sc-6946. Western blot analysis of L-Selectin expression in Jurkat whole cell lysate.

SELECT PRODUCT CITATIONS

1. de Caupade, C., et al. 2003. Dexamethasone enhances interaction of endogenous Annexin I with L-Selectin and triggers shedding of L-Selectin in the monocytic cell line U-937. *Br. J. Pharmacol.* 140: 133-145.
2. Kao, T.J., et al. 2007. L-type voltage-operated Ca²⁺ channels modulate transient Ca²⁺ influx triggered by activation of Sertoli cell surface L-Selectin. *J. Cell. Biochem.* 101: 1023-1037.

STORAGE

Store at 4° C, **DO NOT FREEZE** Stable for one year from the date of shipment. Non-hazardous. No MSDS required.

RESEARCH USE

For research use only, not for use in diagnostic procedures.

PROTOCOLS

See our web site at www.scbt.com or our catalog for detailed protocols and support products.



Try **L-Selectin (B-8): sc-390756** or **L-Selectin (Iam1-116): sc-13505**, our highly recommended monoclonal alternatives to L-Selectin (N-18).