

# Factor I (T-19): sc-69470

## BACKGROUND

The complement pathway is an important host defense system that contributes to both innate and acquired immunity. There are three pathways of complement activation: the classical pathway, lectin pathway and alternative pathway. Complement protein Factor I is a key serine protease that modulates the complement cascade by regulating the levels of C3 convertases. It circulates in plasma as a heavily N-glycosylated heterodimer made up of two disulfide linked chains, each carrying three N-linked oligosaccharide chains that may have both structural and functional roles in the interactions with the natural substrate and the cofactor during catalysis. Factor I is a serine protease with a high degree of specificity for C3b and C4b. It requires protein cofactors for cleavage of these complement proteins; Factor H, CR1 or MCP are required for C3b cleavage, and C4bp or CR1 are required for C4b cleavage.

## CHROMOSOMAL LOCATION

Genetic locus: CFI (human) mapping to 4q25.

## SOURCE

Factor I (T-19) is an affinity purified goat polyclonal antibody raised against a peptide mapping within an internal region of Factor I of human origin.

## PRODUCT

Each vial contains 200 µg IgG in 1.0 ml of PBS with < 0.1% sodium azide and 0.1% gelatin.

Blocking peptide available for competition studies, sc-69470 P, (100 µg peptide in 0.5 ml PBS containing < 0.1% sodium azide and 0.2% BSA).

## STORAGE

Store at 4° C, **\*\*DO NOT FREEZE\*\***. Stable for one year from the date of shipment. Non-hazardous. No MSDS required.

## APPLICATIONS

Factor I (T-19) is recommended for detection of Factor I of human origin by Western Blotting (starting dilution 1:200, dilution range 1:100-1:1000), immunoprecipitation [1-2 µg per 100-500 µg of total protein (1 ml of cell lysate)], immunofluorescence (starting dilution 1:50, dilution range 1:50-1:500) and solid phase ELISA (starting dilution 1:30, dilution range 1:30-1:3000).

Factor I (T-19) is also recommended for detection of Factor I in additional species, including equine.

Suitable for use as control antibody for Factor I siRNA (h): sc-72081, Factor I shRNA Plasmid (h): sc-72081-SH and Factor I shRNA (h) Lentiviral Particles: sc-72081-V.

Molecular Weight of pro Factor I: 88 kDa.

Molecular Weight of Factor I heavy chain: 50 kDa.

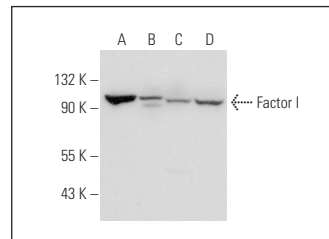
Molecular Weight of Factor I light chain: 38 kDa.

Positive Controls: HeLa whole cell lysate: sc-2200, Jurkat whole cell lysate: sc-2204 or U-698-M whole cell lysate: sc-364799.

## RECOMMENDED SECONDARY REAGENTS

To ensure optimal results, the following support (secondary) reagents are recommended: 1) Western Blotting: use donkey anti-goat IgG-HRP: sc-2020 (dilution range: 1:2000-1:100,000) or Cruz Marker™ compatible donkey anti-goat IgG-HRP: sc-2033 (dilution range: 1:2000-1:5000), Cruz Marker™ Molecular Weight Standards: sc-2035, TBS Blotto A Blocking Reagent: sc-2333 and Western Blotting Luminol Reagent: sc-2048. 2) Immunoprecipitation: use Protein A/G PLUS-Agarose: sc-2003 (0.5 ml agarose/2.0 ml). 3) Immunofluorescence: use donkey anti-goat IgG-FITC: sc-2024 (dilution range: 1:100-1:400) or donkey anti-goat IgG-TR: sc-2783 (dilution range: 1:100-1:400) with UltraCruz™ Mounting Medium: sc-24941.

## DATA



Factor I (T-19): sc-69470. Western blot analysis of Factor I expression in Jurkat (A), HeLa (B), U-251-MG (C) and U-698-M (D) whole cell lysates.

## RESEARCH USE

For research use only, not for use in diagnostic procedures.

## PROTOCOLS

See our web site at [www.scbt.com](http://www.scbt.com) or our catalog for detailed protocols and support products.


 MONOS  
Satisfaction  
Guaranteed

Try **Factor I (3D6): sc-57507**, our highly recommended monoclonal alternative to Factor I (T-19).