

CHMP1B (C-20): sc-69547

BACKGROUND

The charged multivesicular body proteins or chromatin modifying proteins, commonly designated CHMPs, belong to the vacuolar sorting protein family and function as chromatin-modifying proteins. CHMP1-6 are all components of ESCRT (endosomal sorting complex required for transport) I, II or III complexes. These complexes are crucial for sorting endosomal articles into multivesicular bodies (MVBs), and are also required for the formation of these bodies. CHMP1 interacts with VPS4B and localizes to early endosomes. Two isoforms, encoded by distinct genes, exist for CHMP1. They are designated CHMP1A and CHMP1B. CHMP1 overexpression can lead to the dilation of endosomal compartments resulting in a disruption of the normal distribution of endosomal markers.

REFERENCES

1. Stauffer, D.R., Howard, T.L., Nyun, T. and Hollenberg, S.M. 2001. CHMP1 is a novel nuclear matrix protein affecting chromatin structure and cell-cycle progression. *J. Cell Sci.* 114: 2383-2393.
2. Howard, T.L., Stauffer, D.R., Degnin, C.R. and Hollenberg, S.M. 2001. CHMP1 functions as a member of a newly defined family of vesicle trafficking proteins. *J. Cell Sci.* 114: 2395-2404.
3. Yang, K.S., Jin, U.H., Kim, J., Song, K., Kim, S.J., Hwang, I., Lim, Y.P. and Pai, H.S. 2004. Molecular characterization of NbCHMP1 encoding a homolog of human CHMP1 in *Nicotiana benthamiana*. *Mol. Cells* 17: 255-261.
4. Reid, E., Connell, J., Edwards, T.L., Duley, S., Brown, S.E. and Sanderson, C.M. 2005. The hereditary spastic paraplegia protein spastin interacts with the ESCRT-III complex-associated endosomal protein CHMP1B. *Hum. Mol. Genet.* 14: 19-38.
5. Horii, M., Shibata, H., Kobayashi, R., Katoh, K., Yorikawa, C., Yasuda, J. and Maki, M. 2006. CHMP7, a novel ESCRT-III-related protein, associates with CHMP4B and functions in the endosomal sorting pathway. *Biochem. J.* 400: 23-32.
6. Agromayor, M. and Martin-Serrano, J. 2006. Interaction of AMSH with ESCRT-III and deubiquitination of endosomal cargo. *J. Biol. Chem.* 281: 23083-23091.
7. Kato, T. 2007. Molecular genetics of bipolar disorder and depression. *Psychiatry Clin. Neurosci.* 61: 3-19.

CHROMOSOMAL LOCATION

Genetic locus: CHMP1B (human) mapping to 18p11.21; Chmp1b (mouse) mapping to 18 E1, 2610002M06Rik (mouse) mapping to X D.

SOURCE

CHMP1B (C-20) is an affinity purified rabbit polyclonal antibody raised against a peptide mapping near the C-terminus of CHMP1B of human origin.

STORAGE

Store at 4° C, **DO NOT FREEZE**. Stable for one year from the date of shipment. Non-hazardous. No MSDS required.

PRODUCT

Each vial contains 100 µg IgG in 1.0 ml of PBS with < 0.1% sodium azide and 0.1% gelatin.

Blocking peptide available for competition studies, sc-69547 P, (100 µg peptide in 0.5 ml PBS containing < 0.1% sodium azide and 0.2% BSA).

APPLICATIONS

CHMP1B (C-20) is recommended for detection of CHMP1B of mouse, rat and human origin by Western Blotting (starting dilution 1:200, dilution range 1:100-1:1000), immunoprecipitation [1-2 µg per 100-500 µg of total protein (1 ml of cell lysate)], immunofluorescence (starting dilution 1:50, dilution range 1:50-1:500) and solid phase ELISA (starting dilution 1:30, dilution range 1:30-1:3000); also recommended for detection of 2610002M06Rik of mouse origin.

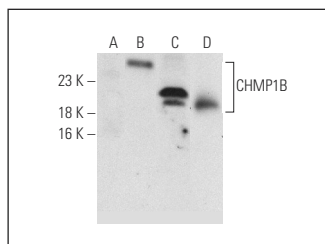
CHMP1B (C-20) is also recommended for detection of CHMP1B in additional species, including equine, canine, bovine, porcine and avian.

Suitable for use as control antibody for CHMP1B siRNA (h): sc-72893, CHMP1B shRNA Plasmid (h): sc-72893-SH and CHMP1B shRNA (h) Lentiviral Particles: sc-72893-V.

Molecular Weight of CHMP1B: 22 kDa.

Positive Controls: CHMP1B (m): 293T Lysate: sc-119239, HeLa whole cell lysate: sc-2200 or mouse thyroid extract: sc-2407.

DATA



CHMP1B (C-20): sc-69547. Western blot analysis of CHMP1B expression in non-transfected 293T: sc-117752 (A), mouse CHMP1B transfected 293T: sc-119239 (B) and HeLa (C) whole cell lysates and mouse thyroid tissue extract (D).

RESEARCH USE

For research use only, not for use in diagnostic procedures.



Try **CHMP1B (D-10): sc-514013**, our highly recommended monoclonal alternative to CHMP1B (C-20).