

# LSm2 (T-19): sc-69584

## BACKGROUND

Sm and Sm-like (LSm) proteins form donut shaped heptameric complexes that are involved in various steps of RNA metabolism. LSm proteins facilitate RNA protein interactions and structural changes that are required during ribosomal subunit assembly. The U6 snRNA-associated Sm-like protein LSm2 is also known as small nuclear ribonucleoprotein D homolog SNP3.

## REFERENCES

- Pannone, B.K., Kim, S.D., Noe, D.A. and Wolin, S.L. 2001. Multiple functional interactions between components of the LSm2-LSm8 complex, U6 snRNA, and the yeast La protein. *Genetics* 158: 187-196.
- Ingelfinger, D., Arndt-Jovin, D.J., Lüthmann, R. and Achsel, T. 2002. The human LSm1-7 proteins colocalize with the mRNA-degrading enzymes Dcp1/2 and Xrnl in distinct cytoplasmic foci. *RNA* 8: 1489-1501.
- Kufel, J., Allmang, C., Petfalski, E., Beggs, J. and Tollervey, D. 2003. LSm proteins are required for normal processing and stability of ribosomal RNAs. *J. Biol. Chem.* 278: 2147-2156.
- Fernandez, C.F., Pannone, B.K., Chen, X., Fuchs, G. and Wolin, S.L. 2004. An LSm2-LSm7 complex in *Saccharomyces cerevisiae* associates with the small nucleolar RNA snR5. *Mol. Biol. Cell* 15: 2842-2852.
- Verdone, L., Galardi, S., Page, D. and Beggs, J.D. 2004. LSm proteins promote regeneration of pre-mRNA splicing activity. *Curr. Biol.* 14: 1487-1491.
- Kufel, J., Bousquet-Antonelli, C., Beggs, J.D. and Tollervey, D. 2004. Nuclear pre-mRNA decapping and 5' degradation in yeast require the LSm2-8p complex. *Mol. Cell. Biol.* 24: 9646-9657.
- Zaric, B., Chami, M., Rémy, H., Engel, A., Ballmer-Hofer, K., Winkler, F.K. and Kambach, C. 2005. Reconstitution of two recombinant LSm protein complexes reveals aspects of their architecture, assembly, and function. *J. Biol. Chem.* 280: 16066-16075.
- Spiller, M.P., Boon, K.L., Reijns, M.A. and Beggs, J.D. 2007. The LSm2-8 complex determines nuclear localization of the spliceosomal U6 snRNA. *Nucleic Acids Res.* 35: 923-929.

## CHROMOSOMAL LOCATION

Genetic locus: LSM2 (human) mapping to 6p21.33; Lsm2 (mouse) mapping to 17 B1.

## SOURCE

LSm2 (T-19) is an affinity purified goat polyclonal antibody raised against a peptide mapping within an internal region of LSm2 of human origin.

## PRODUCT

Each vial contains 200 µg IgG in 1.0 ml of PBS with < 0.1% sodium azide and 0.1% gelatin.

Blocking peptide available for competition studies, sc-69584 P, (100 µg peptide in 0.5 ml PBS containing < 0.1% sodium azide and 0.2% BSA).

Available as TransCruz reagent for Gel Supershift and ChIP applications, sc-69584 X, 200 µg/0.1 ml.

## APPLICATIONS

LSm2 (T-19) is recommended for detection of LSm2 of mouse, rat and human origin by Western Blotting (starting dilution 1:200, dilution range 1:100-1:1000), immunofluorescence (starting dilution 1:50, dilution range 1:50-1:500), immunohistochemistry (including paraffin-embedded sections) (starting dilution 1:50, dilution range 1:50-1:500) and solid phase ELISA (starting dilution 1:30, dilution range 1:30-1:3000).

LSm2 (T-19) is also recommended for detection of LSm2 in additional species, including equine, canine, bovine and porcine.

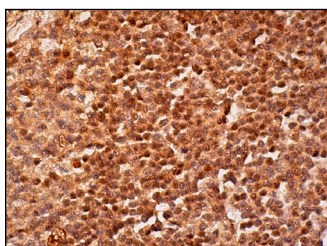
Suitable for use as control antibody for LSm2 siRNA (h): sc-75705, LSm2 siRNA (m): sc-75706, LSm2 shRNA Plasmid (h): sc-75705-SH, LSm2 shRNA Plasmid (m): sc-75706-SH, LSm2 shRNA (h) Lentiviral Particles: sc-75705-V and LSm2 shRNA (m) Lentiviral Particles: sc-75706-V.

LSm2 (T-19) X TransCruz antibody is recommended for Gel Supershift and ChIP applications.

## RECOMMENDED SECONDARY REAGENTS

To ensure optimal results, the following support (secondary) reagents are recommended: 1) Western Blotting: use donkey anti-goat IgG-HRP: sc-2020 (dilution range: 1:2000-1:100,000) or Cruz Marker™ compatible donkey anti-goat IgG-HRP: sc-2033 (dilution range: 1:2000-1:5000), Cruz Marker™ Molecular Weight Standards: sc-2035, TBS Blotto A Blocking Reagent: sc-2333 and Western Blotting Luminol Reagent: sc-2048. 2) Immunofluorescence: use donkey anti-goat IgG-FITC: sc-2024 (dilution range: 1:100-1:400) or donkey anti-goat IgG-TR: sc-2783 (dilution range: 1:100-1:400) with UltraCruz™ Mounting Medium: sc-24941. 3) Immunohistochemistry: use ImmunoCruz™: sc-2053 or ABC: sc-2023 goat IgG Staining Systems.

## DATA



LSm2 (T-19): sc-69584. Immunoperoxidase staining of formalin fixed, paraffin-embedded human tonsil tissue showing nuclear and cytoplasmic staining of cells in germinal center and cells in non-germinal center.

## STORAGE

Store at 4° C, **\*\*DO NOT FREEZE\*\***. Stable for one year from the date of shipment. Non-hazardous. No MSDS required.

## RESEARCH USE

For research use only, not for use in diagnostic procedures.