

Protein C (HLW-C): sc-69662

BACKGROUND

Protein C is a vitamin K-dependent plasma protein that is produced in the liver and made up of two polypeptide chains. It is an important anti-coagulant activated by Thrombin bound to an endothelial surface receptor and it enzymatically cleaves activated forms of Factors V and VIII, thus inhibiting blood coagulation. Protein C is similar to the prothrombin group of blood coagulation factors in its primary structure. Normal Protein C concentration in human plasma is approximately 1-3 mg/ml and the proenzyme concentration is approximately 3 µg/ml. Protein C deficiency is associated with inherited thrombophilia, a rare genetic disorder that predisposes affected individuals to venous thrombosis and habitual abortion.

REFERENCES

- Griffin, J.H., Evatt, B., Zimmerman, T.S., Kleiss, A.J. and Wideman, C. 1981. Deficiency of Protein C in congenital thrombotic disease. *J. Clin. Investig.* 68: 1370-1373.
- Esmon, C.T. 1989. The roles of Protein C and thrombomodulin in the regulation of blood coagulation. *J. Biol. Chem.* 264: 4743-4746.
- Dahlbäck, B., Carlsson, M. and Svensson, P.J. 1993. Familial thrombophilia due to a previously unrecognized mechanism characterized by poor anticoagulant response to activated Protein C: prediction of a cofactor to activated Protein C. *Proc. Nat. Acad. Sci. USA* 90: 1004-1008.
- Bertina, R.M., Koeleman, B.P., Koster, T., Rosendaal, F.R., Dirven, R.J., de Ronde, H., van der Velden, P.A. and Reitsma, P.H. 1994. Mutation in blood coagulation Factor V associated with resistance to activated Protein C. *Nature* 369: 64-67.
- Dahlbäck, B. 1995. Inherited thrombophilia: resistance to activated Protein C as a pathogenic factor of venous thromboembolism. *Blood* 85: 607-614.
- Preston, F.E., Rosendaal, F.R., Walker, I.D., Briët, E., Berntorp, E., Conard, J., Fontcuberta, J., Makris, M., Mariani, G., Noteboom, W., Pabinger, I., Legnani, C., Scharer, I., Schulman, S. and van der Meer, F.J. 1996. Increased fetal loss in women with heritable thrombophilia. *Lancet* 348: 913-916.
- Abu-Amero, K.K., Owaidah, T.M. and Al-Mahed, M. 2006. Severe type I Protein C deficiency with neonatal purpura fulminans due to a novel homozygous mutation in exon 6 of the Protein C gene. *J. Thromb. Haemost.* 4: 1152-1153.
- Brueckmann, M., Nahrup, A.S., Lang, S., Bertsch, T., Fukudome, K., Liebe, V., Kaden, J.J., Hoffmann, U., Borggreffe, M. and Huhle, G. 2006. Recombinant human activated Protein C upregulates the release of soluble fractalkine from human endothelial cells. *Br. J. Haematol.* 133: 550-557.
- Esmon, C.T. 2006. Inflammation and the activated Protein C anticoagulant pathway. *Semin. Thromb. Hemost.* 32: 49-60.

CHROMOSOMAL LOCATION

Genetic locus: PROC (human) mapping to 2q14.3.

RESEARCH USE

For research use only, not for use in diagnostic procedures.

SOURCE

Protein C (HLW-C) is a mouse monoclonal antibody raised against Protein C from blood of human origin.

PRODUCT

Each vial contains 100 µg IgG_{2b} kappa light chain in 1.0 ml of PBS with < 0.1% sodium azide and 0.1% gelatin.

APPLICATIONS

Protein C (HLW-C) is recommended for detection of Protein C of human origin by Western Blotting (starting dilution 1:200, dilution range 1:100-1:1000), immunoprecipitation [1-2 µg per 100-500 µg of total protein (1 ml of cell lysate)] and solid phase ELISA (starting dilution 1:30, dilution range 1:30-1:3000).

Suitable for use as control antibody for Protein C siRNA (h): sc-72054, Protein C shRNA Plasmid (h): sc-72054-SH and Protein C shRNA (h) Lentiviral Particles: sc-72054-V.

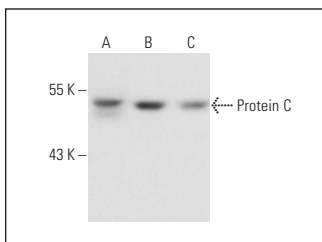
Molecular Weight of Protein C: 52 kDa.

Positive Controls: Hep G2 cell lysate: sc-2227, K-562 whole cell lysate: sc-2203 or ECV304 cell lysate: sc-2269.

RECOMMENDED SUPPORT REAGENTS

To ensure optimal results, the following support reagents are recommended: 1) Western Blotting: use m-IgGκ BP-HRP: sc-516102 or m-IgGκ BP-HRP (Cruz Marker): sc-516102-CM (dilution range: 1:1000-1:10000), Cruz Marker™ Molecular Weight Standards: sc-2035, UltraCruz® Blocking Reagent: sc-516214 and Western Blotting Luminol Reagent: sc-2048. 2) Immunoprecipitation: use Protein A/G PLUS-Agarose: sc-2003 (0.5 ml agarose/2.0 ml).

DATA



Protein C (HLW-C): sc-69662. Western blot analysis of Protein C expression in Hep G2 (A), K-562 (B) and ECV304 (C) whole cell lysates.

STORAGE

Store at 4° C, **DO NOT FREEZE**. Stable for one year from the date of shipment. Non-hazardous. No MSDS required.

PROTOCOLS

See our web site at www.scbt.com for detailed protocols and support products.