

α A-crystallin (SUB4): sc-69687

BACKGROUND

Crystallins are the major proteins of the vertebrate eye lens, where they maintain the transparency and refractive index of the lens. Crystallins are divided into α , β and γ families, and the β - and γ -crystallins also compose a superfamily. Crystallins usually contain seven distinct protein regions, including four homologous motifs, a connecting peptide, and N- and C-terminal extensions. α -crystallins consist of three gene products, α A, α B and α C-crystallin, which are members of the small heat shock protein family (HSP 20). They are induced by heat shock, and act as molecular chaperones by holding denatured proteins in large soluble aggregates. However, unlike other molecular chaperones, α -crystallins do not renature these proteins. Expression of α A-crystallin is restricted to the lens. Defects in this gene cause autosomal dominant congenital cataracts (ADCC). The human α B-crystallin gene product is expressed in many tissues, including lens, heart and skeletal muscle. Elevated expression of α B-crystallin is associated with many neurological diseases, and a missense mutation in this gene has co-segregated in a family with a Desmin-related myopathy.

REFERENCES

1. Neuffer, P.D., et al. 1996. Differential expression of B-crystallin and HSP 27 in skeletal muscle during continuous contractile activity. Relationship to myogenic regulatory factors. *J. Biol. Chem.* 271: 24089-24095.
2. Litt, M., et al. 1998. Autosomal dominant congenital cataract associated with a missense mutation in the human α -crystallin gene CRYAA. *Hum. Mol. Genet.* 7: 471-474.
3. Haley, D.A., et al. 1998. The small heat-shock protein, α B-crystallin, has a variable quaternary structure. *J. Mol. Biol.* 277: 27-35.
4. Bova, M.P., et al. 1999. Mutation R120G in α B-crystallin, which is linked to a Desmin-related myopathy, results in an irregular structure and defective chaperone-like function. *Proc. Natl. Acad. Sci. USA* 96: 6137-6142.
7. Wang, K., et al. 2000. α -crystallin prevents irreversible protein denaturation and acts cooperatively with other heat-shock proteins to renature the stabilized partially denatured protein in an ATP-dependent manner. *Eur. J. Biochem.* 267: 4705-4712.
8. Jaenicke, R., et al. 2001. Lens crystallins and their microbial homologs: structure, stability, and function. *Crit. Rev. Biochem. Mol. Biol.* 36: 435-499.

CHROMOSOMAL LOCATION

Genetic locus: CRYAA (human) mapping to 21q22.3, Cryaa (mouse) mapping to 17 B1.

SOURCE

α A-crystallin (SUB4) is a mouse monoclonal antibody raised against full length α A-crystallin of bovine origin.

PRODUCT

Each vial contains 200 μ g IgG₁ kappa light chain in 1.0 ml of PBS with < 0.1% sodium azide and 0.1% gelatin.

APPLICATIONS

α A-crystallin (SUB4) is recommended for detection of α A-crystallin of mouse, rat, human, bovine and avian origin by Western Blotting (starting dilution 1:200, dilution range 1:100-1:1000), immunoprecipitation [1-2 μ g per 100-500 μ g of total protein (1 ml of cell lysate)], immunofluorescence (starting dilution 1:50, dilution range 1:50-1:500) and solid phase ELISA (starting dilution 1:30, dilution range 1:30-1:3000).

Suitable for use as control antibody for α A-crystallin siRNA (h): sc-40430, α A-crystallin siRNA (m): sc-40431, α A-crystallin shRNA Plasmid (h): sc-40430-SH, α A-crystallin shRNA Plasmid (m): sc-40431-SH, α A-crystallin shRNA (m) Lentiviral Particles: sc-40430-V and α A-crystallin shRNA (m) Lentiviral Particles: sc-40431-V.

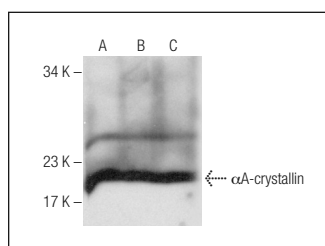
Molecular Weight of α A-crystallin: 20 kDa.

Positive Controls: Y79 whole cell lysate: sc-2240, ARPE-19 whole cell lysate: sc-364357 and U-87 MG whole cell lysate: sc-2411.

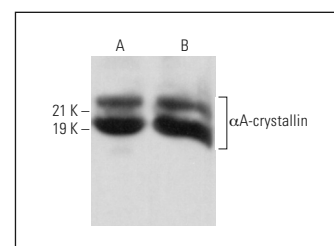
RECOMMENDED SUPPORT REAGENTS

To ensure optimal results, the following support reagents are recommended: 1) Western Blotting: use m-IgG κ BP-HRP: sc-516102 or m-IgG κ BP-HRP (Cruz Marker): sc-516102-CM (dilution range: 1:1000-1:10000), Cruz Marker™ Molecular Weight Standards: sc-2035, UltraCruz® Blocking Reagent: sc-516214 and Western Blotting Luminol Reagent: sc-2048. 2) Immunoprecipitation: use Protein A/G PLUS-Agarose: sc-2003 (0.5 ml agarose/2.0 ml). 3) Immunofluorescence: use m-IgG κ BP-FITC: sc-516140 or m-IgG κ BP-PE: sc-516141 (dilution range: 1:50-1:200) with UltraCruz® Mounting Medium: sc-24941 or UltraCruz® Hard-set Mounting Medium: sc-359850.

DATA



α A-crystallin (SUB4): sc-69687. Western blot analysis of α A-crystallin expression in Y79 (A), ARPE-19 (B) and U-87 MG (C) whole cell lysates.



α A-crystallin (SUB4): sc-69687. Western blot analysis of α A-crystallin expression in rat eye (A) and mouse eye (B) tissue extracts.

STORAGE

Store at 4° C, **DO NOT FREEZE**. Stable for one year from the date of shipment. Non-hazardous. No MSDS required.

RESEARCH USE

For research use only, not for use in diagnostic procedures.

PROTOCOLS

See our web site at www.scbt.com for detailed protocols and support products.