

# CD2 (C-20): sc-6987

## BACKGROUND

CD2 (also designated E-rosette receptor) interacts through its amino-terminal domain with the extracellular domain of CD58 (also designated CD2 ligand) to mediate cell adhesion. CD2/CD58 binding can enhance antigen-specific T cell activation. CD2 is a transmembrane glycoprotein that is expressed on peripheral blood T lymphocytes, NK cells and thymocytes, as well as on mouse B cells and rat splenic macrophages. CD58 is a heavily glycosylated protein with a broad tissue distribution in hematopoietic and other cells, including endothelium. Interaction between CD2 and its counterreceptor LFA3 (CD58) on opposing cells optimizes immune system recognition, thereby facilitating communication between helper T lymphocytes and antigen-presenting cells, as well as between cytolytic effectors and target cells.

## REFERENCES

1. Shaw, A.S., et al. 1997. Making the T cell receptor go the distance: a topological view of T cell activation. *Immunity* 6: 361-369.
2. Dustin, M.L., et al. 1998. A novel adaptor protein orchestrates receptor patterning and cytoskeletal polarity in T cell contacts. *Cell* 94: 667-677.
3. Nishizawa, K., et al. 1998. Identification of a proline-binding motif regulating CD2-triggered T lymphocyte activation. *Proc. Natl. Acad. Sci. USA* 95: 14897-14902.
4. Shih, N.Y., et al. 1999. Congenital nephrotic syndrome in mice lacking CD2-associated protein. *Science* 286: 312-315.
5. Guan, F., et al. 2006. Autocrine VEGF-A system in podocytes regulates podocin and its interaction with CD2AP. *Am. J. Physiol. Renal Physiol.* 291: F422-F428.
6. Fan, Q., et al. 2006. The relationship among nephrin, podocin, CD2AP and  $\alpha$ -actinin might not be a true "interaction" in podocyte. *Kidney Int.* 69: 1207-1215.

## SOURCE

CD2 (C-20) is an affinity purified goat polyclonal antibody raised against a peptide mapping at the C-terminus of CD2 of human origin.

## PRODUCT

Each vial contains 200  $\mu$ g IgG in 1.0 ml of PBS with < 0.1% sodium azide and 0.1% gelatin.

Blocking peptide available for competition studies, sc-6987 P, (100  $\mu$ g peptide in 0.5 ml PBS containing < 0.1% sodium azide and 0.2% BSA).

## STORAGE

Store at 4° C, **\*\*DO NOT FREEZE\*\***. Stable for one year from the date of shipment. Non-hazardous. No MSDS required.

## PROTOCOLS

See our web site at [www.scbt.com](http://www.scbt.com) or our catalog for detailed protocols and support products.

## APPLICATIONS

CD2 (C-20) is recommended for detection of CD2 of human origin by Western Blotting (starting dilution 1:200, dilution range 1:100-1:1000), immunoprecipitation [1-2  $\mu$ g per 100-500  $\mu$ g of total protein (1 ml of cell lysate)], immunofluorescence (starting dilution 1:50, dilution range 1:50-1:500) and solid phase ELISA (starting dilution 1:30, dilution range 1:30-1:3000).

Suitable for use as control antibody for CD2 siRNA (h): sc-29970, CD2 shRNA Plasmid (h): sc-29970-SH and CD2 shRNA (h) Lentiviral Particles: sc-29970-V.

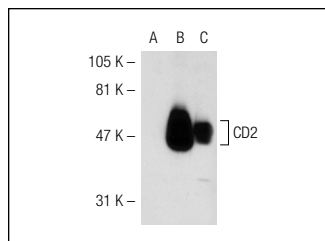
Molecular Weight of CD2: 50 kDa.

Positive Controls: Jurkat whole cell lysate: sc-2204, MOLT-4 cell lysate: sc-2233 or CD2 (h): 293T Lysate: sc-114105.

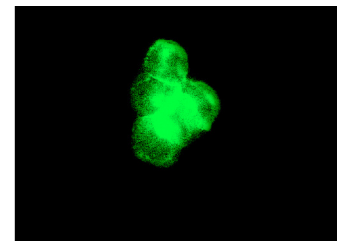
## RECOMMENDED SECONDARY REAGENTS

To ensure optimal results, the following support (secondary) reagents are recommended: 1) Western Blotting: use donkey anti-goat IgG-HRP: sc-2020 (dilution range: 1:2000-1:100,000) or Cruz Marker™ compatible donkey anti-goat IgG-HRP: sc-2033 (dilution range: 1:2000-1:5000), Cruz Marker™ Molecular Weight Standards: sc-2035, TBS Blotto A Blocking Reagent: sc-2333 and Western Blotting Luminol Reagent: sc-2048. 2) Immunoprecipitation: use Protein A/G PLUS-Agarose: sc-2003 (0.5 ml agarose/2.0 ml). 3) Immunofluorescence: use donkey anti-goat IgG-FITC: sc-2024 (dilution range: 1:100-1:400) or donkey anti-goat IgG-TR: sc-2783 (dilution range: 1:100-1:400) with UltraCruz™ Mounting Medium: sc-24941.

## DATA



CD2 (C-20): sc-6987. Western blot analysis of CD2 expression in non-transfected 293T: sc-117752 (A), human CD2 transfected 293T: sc-114105 (B) and Jurkat (C) whole cell lysates.



CD2 (C-20): sc-6987. Immunofluorescence staining of methanol-fixed Jurkat cells showing membrane staining.

## RESEARCH USE

For research use only, not for use in diagnostic procedures.

**MONOS**  
Satisfaction  
Guaranteed

Try **CD2 (MT910): sc-19638** or **CD2 (B-8): sc-136974**, our highly recommended monoclonal alternatives to CD2 (C-20).