

SOCS-1 (N-18): sc-7006

BACKGROUND

The SOCS (suppressor of cytokine signaling) gene family consists of a group of proteins that negatively regulate cytokine signal transduction. The SOCS family proteins contain a central SH2 domain and a carboxy-terminal region termed the "SOCS box". The SOCS-1 (also called SSI-1 and JAB), SOCS-2 (also called SSI-2 and CIS2) and SOCS-3 (also called SSI-3 and CIS3) genes are known to be upregulated by IL-6 and other cytokines. SOCS-4, SOCS-5, SOCS-6 and SOCS-7 were identified by their sequence homology with the SOCS box. CIS (for cytokine-inducible SH2-containing protein) is also a member of the SOCS family.

CHROMOSOMAL LOCATION

Genetic locus: SOCS1 (human) mapping to 16p13.13; Socs1 (mouse) mapping to 16 A1.

SOURCE

SOCS-1 (N-18) is an affinity purified goat polyclonal antibody raised against a peptide mapping to the N-terminus of SOCS-1 of human origin.

PRODUCT

Each vial contains 200 µg IgG in 1.0 ml of PBS with < 0.1% sodium azide and 0.1% gelatin.

Blocking peptide available for competition studies, sc-7006 P, (100 µg peptide in 0.5 ml PBS containing < 0.1% sodium azide and 0.2% BSA).

STORAGE

Store at 4° C, ****DO NOT FREEZE****. Stable for one year from the date of shipment. Non-hazardous. No MSDS required.

RESEARCH USE

For research use only, not for use in diagnostic procedures.

APPLICATIONS

SOCS-1 (N-18) is recommended for detection of SOCS-1 of mouse, rat and human origin by Western Blotting (starting dilution 1:200, dilution range 1:100-1:1000), immunofluorescence (starting dilution 1:50, dilution range 1:50-1:500), immunohistochemistry (including paraffin-embedded sections) (starting dilution 1:50, dilution range 1:50-1:500) and solid phase ELISA (starting dilution 1:30, dilution range 1:30-1:3000).

SOCS-1 (N-18) is also recommended for detection of SOCS-1 in additional species, including bovine and porcine.

Suitable for use as control antibody for SOCS-1 siRNA (h): sc-40996, SOCS-1 siRNA (m): sc-40997, SOCS-1 shRNA Plasmid (h): sc-40996-SH, SOCS-1 shRNA Plasmid (m): sc-40997-SH, SOCS-1 shRNA (h) Lentiviral Particles: sc-40996-V and SOCS-1 shRNA (m) Lentiviral Particles: sc-40997-V.

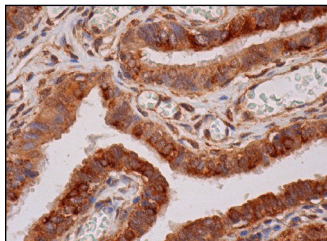
Molecular Weight of SOCS-1: 24 kDa.

Positive Controls: HeLa whole cell lysate: sc-2200, JAR cell lysate: sc-2276 or JEG-3 whole cell lysate: sc-364255.

RECOMMENDED SECONDARY REAGENTS

To ensure optimal results, the following support (secondary) reagents are recommended: 1) Western Blotting: use donkey anti-goat IgG-HRP: sc-2020 (dilution range: 1:2000-1:100,000) or Cruz Marker™ compatible donkey anti-goat IgG-HRP: sc-2033 (dilution range: 1:2000-1:5000), Cruz Marker™ Molecular Weight Standards: sc-2035, TBS Blotto A Blocking Reagent: sc-2333 and Western Blotting Luminol Reagent: sc-2048. 2) Immunofluorescence: use donkey anti-goat IgG-FITC: sc-2024 (dilution range: 1:100-1:400) or donkey anti-goat IgG-TR: sc-2783 (dilution range: 1:100-1:400) with UltraCruz™ Mounting Medium: sc-24941. 3) Immunohistochemistry: use ImmunoCruz™: sc-2053 or ABC: sc-2023 goat IgG Staining Systems.

DATA



SOCS-1 (N-18): sc-7006. Immunoperoxidase staining of formalin fixed, paraffin-embedded human fallopian tube tissue showing cytoplasmic and perinuclear staining of glandular cells.

SELECT PRODUCT CITATIONS

1. Kamura, T., et al. 1998. The Elongin BC complex interacts with the conserved SOCS-box motif present in members of the SOCS, ras, WD-40 repeat, and ankyrin repeat families. *Genes Dev.* 12: 3872-3881.
2. Tam, S.P., et al. 2001. Tissue-specific induction of SOCS gene expression by PRL. *Endocrinology* 142: 5015-5026.
3. Mattner, J., et al. 2004. Protection against progressive leishmaniasis by IFN-β. *J. Immunol.* 172: 7574-7582.
4. Li, Z., et al. 2004. Expression of SOCS-1, suppressor of cytokine signalling-1, in human melanoma. *J. Invest. Dermatol.* 123: 737-745.
5. Zhao, Z.X., et al. 2008. Expression of SOCS-1 in the liver tissues of chronic hepatitis B and its clinical significance. *World J. Gastroenterol.* 14: 607-611.

PROTOCOLS

See our web site at www.scbt.com or our catalog for detailed protocols and support products.