

APXL (I-20): sc-70113

BACKGROUND

APXL, also known as SHROOM2 or HSAPXL, is a 1,616 amino acid protein that localizes to a variety of locations within the cell, including the cytoplasm, the cytoskeleton, the cell junction and the apical cell membrane. Containing one ASD1 domain, one ASD2 domain and one PDZ domain, APXL interacts with F-actin and is thought to mediate endothelial cell morphology during cell spreading, possibly regulating melanosome biogenesis and inducing γ Tubulin redistribution. APXL is expressed in kidney, brain, lung, pancreas and placenta and is overexpressed in melanomas, suggesting a role in tumor transformation and metastasis. The gene encoding APXL maps to human chromosome X, which contains nearly 153 million base pairs and houses over 1,000 genes. In conjunction with chromosome Y, chromosome X is responsible for sex determination. There are a number of conditions related to an abnormal number and combination of sex chromosomes, some of which include Turner's syndrome, color blindness, hemophilia and Duchenne muscular dystrophy.

REFERENCES

- Schiaffino, M.V., Bassi, M.T., Rugarli, E.I., Renieri, A., Galli, L. and Ballabio, A. 1995. Cloning of a human homologue of the *Xenopus laevis* APX gene from the ocular albinism type 1 critical region. *Hum. Mol. Genet.* 4: 373-382.
- Dinulos, M.B., Bassi, M.T., Rugarli, E.I., Chapman, V., Ballabio, A. and Disteche, C.M. 1996. A new region of conservation is defined between human and mouse X chromosomes. *Genomics* 35: 244-247.
- Hagens, O., Ballabio, A., Kalscheuer, V., Kraehenbuhl, J.P., Schiaffino, M.V., Smith, P., Staub, O., Hildebrand, J. and Wallingford, J.B. 2006. A new standard nomenclature for proteins related to Apx and Shroom. *BMC Cell Biol.* 7: 18.
- Dietz, M.L., Bernaciak, T.M., Vendetti, F., Kielec, J.M. and Hildebrand, J.D. 2006. Differential actin-dependent localization modulates the evolutionarily conserved activity of Shroom family proteins. *J. Biol. Chem.* 281: 20542-20554.
- Etournay, R., Zwaenepoel, I., Perfettini, I., Legrain, P., Petit, C. and El-Amraoui, A. 2007. Shroom2, a myosin-VIIa- and actin-binding protein, directly interacts with ZO-1 at tight junctions. *J. Cell Sci.* 120: 2838-2850.
- Online Mendelian Inheritance in Man, OMIM™. 2007. Johns Hopkins University, Baltimore, MD. MIM Number: 300103. World Wide Web URL: <http://www.ncbi.nlm.nih.gov/omim/>

CHROMOSOMAL LOCATION

Genetic locus: Shroom2 (mouse) mapping to X F3.

SOURCE

APXL (I-20) is an affinity purified goat polyclonal antibody raised against a peptide mapping within an internal region of APXL of mouse origin.

STORAGE

Store at 4° C, **DO NOT FREEZE**. Stable for one year from the date of shipment. Non-hazardous. No MSDS required.

PRODUCT

Each vial contains 100 μ g IgG in 1.0 ml of PBS with < 0.1% sodium azide and 0.1% gelatin.

Blocking peptide available for competition studies, sc-70113 P, (100 μ g peptide in 0.5 ml PBS containing < 0.1% sodium azide and 0.2% BSA).

APPLICATIONS

APXL (I-20) is recommended for detection of APXL of mouse and rat origin by Western Blotting (starting dilution 1:200, dilution range 1:100-1:1000), immunoprecipitation [1-2 μ g per 100-500 μ g of total protein (1 ml of cell lysate)], immunofluorescence (starting dilution 1:50, dilution range 1:50-1:500), immunohistochemistry (including paraffin-embedded sections) (starting dilution 1:50, dilution range 1:50-1:500) and solid phase ELISA (starting dilution 1:30, dilution range 1:30-1:3000).

Suitable for use as control antibody for APXL siRNA (m): sc-72526, APXL shRNA Plasmid (m): sc-72526-SH and APXL shRNA (m) Lentiviral Particles: sc-72526-V.

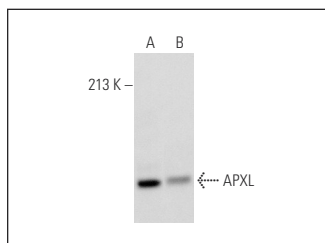
Molecular Weight of APXL: 176 kDa.

Positive Controls: AMJ2-C8 whole cell lysate: sc-364366 or NIH/3T3 whole cell lysate: sc-2210.

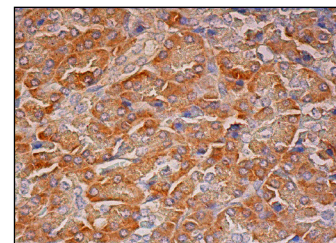
RECOMMENDED SECONDARY REAGENTS

To ensure optimal results, the following support (secondary) reagents are recommended: 1) Western Blotting: use donkey anti-goat IgG-HRP: sc-2020 (dilution range: 1:2000-1:100,000) or Cruz Marker™ compatible donkey anti-goat IgG-HRP: sc-2033 (dilution range: 1:2000-1:5000), Cruz Marker™ Molecular Weight Standards: sc-2035, TBS Blotto A Blocking Reagent: sc-2333 and Western Blotting Luminol Reagent: sc-2048. 2) Immunoprecipitation: use Protein A/G PLUS-Agarose: sc-2003 (0.5 ml agarose/2.0 ml). 3) Immunofluorescence: use donkey anti-goat IgG-FITC: sc-2024 (dilution range: 1:100-1:400) or donkey anti-goat IgG-TR: sc-2783 (dilution range: 1:100-1:400) with UltraCruz™ Mounting Medium: sc-24941. 4) Immunohistochemistry: use ImmunoCruz™: sc-2053 or ABC: sc-2023 goat IgG Staining Systems.

DATA



APXL (I-20): sc-70113. Western blot analysis of APXL expression in AMJ2-C8 (A) and NIH/3T3 (B) whole cell lysates.



APXL (I-20): sc-70113. Immunoperoxidase staining of formalin fixed, paraffin-embedded human pancreas tissue showing cytoplasmic staining of exocrine glandular cells.

RESEARCH USE

For research use only, not for use in diagnostic procedures.