

CIP4 (N-18): sc-70164

BACKGROUND

CIP4 (Cdc42-interacting protein 4), also known as TRIP10 (thyroid hormone receptor interactor 10), STOT, STP or HSTP, is a 601 amino acid protein that localizes to the cytoplasm and the cytoskeleton, as well as to the lysosome and the Golgi apparatus and contains one FCH domain, one SH3 domain and one REM repeat. Expressed in a variety of tissues, including kidney, brain, liver, lung, heart and pancreas, CIP4 is required for the Insulin-dependent translocation of Glut4 to the plasma membrane and is essential for the coordination of membrane tubulation with Actin cytoskeletal reorganization during endocytosis. CIP4 exists as multiple alternative spliced isoforms and is subject to post-translational tyrosine phosphorylation. Aberrant splicing events during CIP4 transcription are associated with the pathogenesis of renal cell carcinoma, suggesting a role for CIP4 in tumor transformation and metastasis.

CHROMOSOMAL LOCATION

Genetic locus: TRIP10 (human) mapping to 19p13.3; Trip10 (mouse) mapping to 17 D.

SOURCE

CIP4 (N-18) is an affinity purified goat polyclonal antibody raised against a peptide mapping near the N-terminus of CIP4 of human origin.

PRODUCT

Each vial contains 200 µg IgG in 1.0 ml of PBS with < 0.1% sodium azide and 0.1% gelatin.

Blocking peptide available for competition studies, sc-70164 P, (100 µg peptide in 0.5 ml PBS containing < 0.1% sodium azide and 0.2% BSA).

STORAGE

Store at 4° C, ****DO NOT FREEZE****. Stable for one year from the date of shipment. Non-hazardous. No MSDS required.

APPLICATIONS

CIP4 (N-18) is recommended for detection of CIP4 of mouse, rat and human origin by Western Blotting (starting dilution 1:200, dilution range 1:100-1:1000), immunoprecipitation [1-2 µg per 100-500 µg of total protein (1 ml of cell lysate)], immunofluorescence (starting dilution 1:50, dilution range 1:50-1:500) and solid phase ELISA (starting dilution 1:30, dilution range 1:30-1:3000).

CIP4 (N-18) is also recommended for detection of CIP4 in additional species, including equine, canine, bovine and porcine.

Suitable for use as control antibody for CIP4 siRNA (h): sc-72910, CIP4 siRNA (m): sc-72911, CIP4 shRNA Plasmid (h): sc-72910-SH, CIP4 shRNA Plasmid (m): sc-72911-SH, CIP4 shRNA (h) Lentiviral Particles: sc-72910-V and CIP4 shRNA (m) Lentiviral Particles: sc-72911-V.

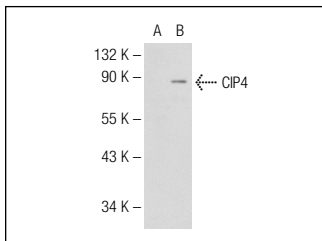
Molecular Weight of CIP4: 75 kDa.

Positive Controls: CIP4 (h2): 293T Lysate: sc-173520, CIP4 (m): 293T Lysate: sc-119268 or JAR cell lysate: sc-2276

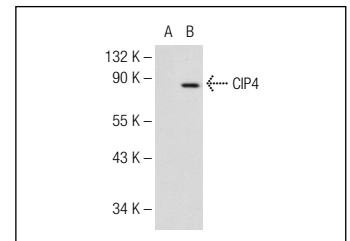
RECOMMENDED SECONDARY REAGENTS

To ensure optimal results, the following support (secondary) reagents are recommended: 1) Western Blotting: use donkey anti-goat IgG-HRP: sc-2020 (dilution range: 1:2000-1:100,000) or Cruz Marker™ compatible donkey anti-goat IgG-HRP: sc-2033 (dilution range: 1:2000-1:5000), Cruz Marker™ Molecular Weight Standards: sc-2035, TBS Blotto A Blocking Reagent: sc-2333 and Western Blotting Luminol Reagent: sc-2048. 2) Immunoprecipitation: use Protein A/G PLUS-Agarose: sc-2003 (0.5 ml agarose/2.0 ml). 3) Immunofluorescence: use donkey anti-goat IgG-FITC: sc-2024 (dilution range: 1:100-1:400) or donkey anti-goat IgG-TR: sc-2783 (dilution range: 1:100-1:400) with UltraCruz™ Mounting Medium: sc-24941.

DATA



CIP4 (N-18): sc-70164. Western blot analysis of CIP4 expression in non-transfected: sc-117752 (A) and mouse CIP4 transfected: sc-119268 (B) 293T whole cell lysates.



CIP4 (N-18): sc-70164. Western blot analysis of CIP4 expression in non-transfected: sc-117752 (A) and human CIP4 transfected: sc-173520 (B) 293T whole cell lysates.

RESEARCH USE

For research use only, not for use in diagnostic procedures.

PROTOCOLS

See our web site at www.scbt.com or our catalog for detailed protocols and support products.



Try **CIP4 (F-10): sc-166810** or **CIP4 (G-2): sc-166809**, our highly recommended monoclonal alternatives to CIP4 (N-18).