

CD23 (N-16): sc-7023

BACKGROUND

The human leukocyte differentiation antigen CD23 (FCE2) is a type II integral membrane glycoprotein that is expressed on mature B cells, monocytes, eosinophils, platelets and dendritic cells. In mouse, CD23 is found only on mature B cells. CD23 is a low affinity IgE receptor that mediates IgE-dependent cytotoxicity and phagocytosis by macrophages and eosinophils. CD23 associates as an oligomer where cooperative binding of at least two lectin domains is required for high affinity IgE binding to CD23. It may play a role in antigen presentation by B cells by interacting with CD40. CD23 has been shown to be associated with the Fyn tyrosine kinase. The truncated molecule can be secreted, then function as a potent mitogenic growth factor. ADAM8, ADAM15 and MDC-L catalyze ectodomain shedding of CD23. Intestinal cells coexpress CD23a and CD23b, and the two splice forms show different localizations in polarized cells.

CHROMOSOMAL LOCATION

Genetic locus: FCER2 (human) mapping to 19p13.2.

SOURCE

CD23 (N-16) is an affinity purified goat polyclonal antibody raised against a peptide mapping at the N-terminus of CD23 of human origin.

PRODUCT

Each vial contains 200 µg IgG in 1.0 ml of PBS with < 0.1% sodium azide and 0.1% gelatin.

Blocking peptide available for competition studies, sc-7023 P, (100 µg peptide in 0.5 ml PBS containing < 0.1% sodium azide and 0.2% BSA).

STORAGE

Store at 4° C, ****DO NOT FREEZE****. Stable for one year from the date of shipment. Non-hazardous. No MSDS required.

APPLICATIONS

CD23 (N-16) is recommended for detection of CD23 of human origin by Western Blotting (starting dilution 1:200, dilution range 1:100-1:1000), immunoprecipitation [1-2 µg per 100-500 µg of total protein (1 ml of cell lysate)], immunofluorescence (starting dilution 1:50, dilution range 1:50-1:500), immunohistochemistry (including paraffin-embedded sections) (starting dilution 1:50, dilution range 1:50-1:500) and solid phase ELISA (starting dilution 1:30, dilution range 1:30-1:3000).

Suitable for use as control antibody for CD23 siRNA (h): sc-29976, CD23 shRNA Plasmid (h): sc-29976-SH and CD23 shRNA (h) Lentiviral Particles: sc-29976-V.

Molecular Weight of CD23 soluble form: 37 kDa.

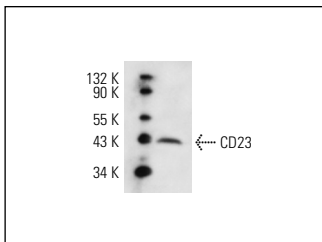
Molecular Weight of CD23 membrane form: 45 kDa.

Positive Controls: CCRF-CEM nuclear extract: sc-2146, human platelet extract: sc-363773 or Daudi cell lysate: sc-2415.

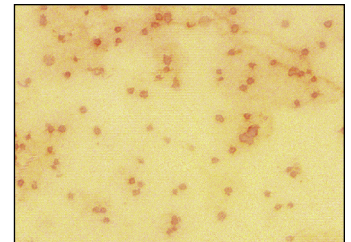
RECOMMENDED SECONDARY REAGENTS

To ensure optimal results, the following support (secondary) reagents are recommended: 1) Western Blotting: use donkey anti-goat IgG-HRP: sc-2020 (dilution range: 1:2000-1:100,000) or Cruz Marker™ compatible donkey anti-goat IgG-HRP: sc-2033 (dilution range: 1:2000-1:5000), Cruz Marker™ Molecular Weight Standards: sc-2035, TBS Blotto A Blocking Reagent: sc-2333 and Western Blotting Luminol Reagent: sc-2048. 2) Immunoprecipitation: use Protein A/G PLUS-Agarose: sc-2003 (0.5 ml agarose/2.0 ml). 3) Immunofluorescence: use donkey anti-goat IgG-FITC: sc-2024 (dilution range: 1:100-1:400) or donkey anti-goat IgG-TR: sc-2783 (dilution range: 1:100-1:400) with UltraCruz™ Mounting Medium: sc-24941. 4) Immunohistochemistry: use ImmunoCruz™: sc-2053 or ABC: sc-2023 goat IgG Staining Systems.

DATA



CD23 (N-16): sc-7023. Western blot analysis of CD23 expression in human platelet whole cell lysate.



CD23 (N-16): sc-7023. Immunoperoxidase staining of formalin fixed human platelet smear showing membrane localization.

RESEARCH USE

For research use only, not for use in diagnostic procedures.

PROTOCOLS

See our web site at www.scbt.com or our catalog for detailed protocols and support products.

MONOS
Satisfaction
Guaranteed

Try **CD23 (H-4): sc-271900** or **CD23 (HD50): sc-18910**, our highly recommended monoclonal alternatives to CD23 (N-16).