

# CD43 (N-19): sc-7053

## BACKGROUND

Over 100 cell surface markers have been identified through the use of monoclonal antibodies. Many of these markers have proven useful in identifying a specific subpopulation of cells within a mixed colony. Accordingly, these molecules have been assigned a "cluster of differentiation" (CD) designation. CD43 is the major O-glycosylated cell-surface associated sialoglycoprotein found on the cell membranes of leukocytes. It is a member of the surface mucin family which plays a central role in cellular adhesion tumor progression. Also called leukosialin, CD43 is best known as a maker for identifying normal and neoplastic T cells and a subset of neoplastic B cells within tissues. CD43 is thought to function as a negative regulator of cellular adhesion.

## REFERENCES

- Holter, W., et al. 1991. Phenotypical and functional characterization of leukocytes—the CD-system. *Wien. Klin. Wochenschr.* 103: 247-262.
- Kim, Y.B., et al. 1994. CD11/CD18 panel report for swine CD workshop. 1994. *Vet. Immunol. Immunopathol.* 43: 289-291.
- Sanchez-Mateos, P., et al. 1995. Regulatory role of CD43 leukosialin in integrin-mediated T-cell adhesion to endothelial and extracellular matrix ligands and is polar redistribution to a cellular uropod. *Blood* 86: 2228-2239.

## CHROMOSOMAL LOCATION

Genetic locus: SPN (human) mapping to 16p11.2.

## SOURCE

CD43 (N-19) is an affinity purified goat polyclonal antibody raised against a peptide mapping at the N-terminus of CD43 of human origin.

## PRODUCT

Each vial contains 200 µg IgG in 1.0 ml of PBS with < 0.1% sodium azide and 0.1% gelatin.

Blocking peptide available for competition studies, sc-7053 P, (100 µg peptide in 0.5 ml PBS containing < 0.1% sodium azide and 0.2% BSA).

## APPLICATIONS

CD43 (N-19) is recommended for detection of CD43 of human origin by Western Blotting (starting dilution 1:200, dilution range 1:100-1:1000), immunoprecipitation [1-2 µg per 100-500 µg of total protein (1 ml of cell lysate)], immunofluorescence (starting dilution 1:50, dilution range 1:50-1:500) and solid phase ELISA (starting dilution 1:30, dilution range 1:30-1:3000).

Suitable for use as control antibody for CD43 siRNA (h): sc-29999, CD43 shRNA Plasmid (h): sc-29999-SH and CD43 shRNA (h) Lentiviral Particles: sc-29999-V.

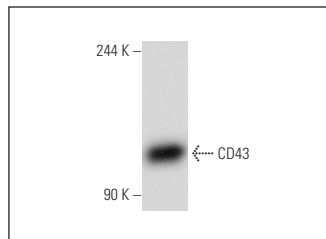
Molecular Weight of CD43: 115-130 kDa.

Positive Controls: Ramos cell lysate: sc-2216, K-562 whole cell lysate: sc-2203 or Jurkat whole cell lysate: sc-2204.

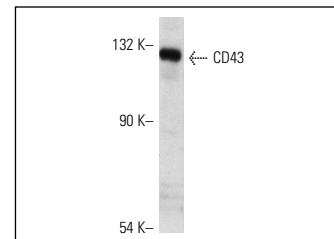
## RECOMMENDED SECONDARY REAGENTS

To ensure optimal results, the following support (secondary) reagents are recommended: 1) Western Blotting: use donkey anti-goat IgG-HRP: sc-2020 (dilution range: 1:2000-1:100,000) or Cruz Marker™ compatible donkey anti-goat IgG-HRP: sc-2033 (dilution range: 1:2000-1:5000), Cruz Marker™ Molecular Weight Standards: sc-2035, TBS Blotto A Blocking Reagent: sc-2333 and Western Blotting Luminol Reagent: sc-2048. 2) Immunoprecipitation: use Protein A/G PLUS-Agarose: sc-2003 (0.5 ml agarose/2.0 ml). 3) Immunofluorescence: use donkey anti-goat IgG-FITC: sc-2024 (dilution range: 1:100-1:400) or donkey anti-goat IgG-TR: sc-2783 (dilution range: 1:100-1:400) with UltraCruz™ Mounting Medium: sc-24941.

## DATA



CD43 (N-19): sc-7053. Western blot analysis of CD43 expression in Jurkat whole cell lysate.



CD43 (N-19): sc-7053. Western blot analysis of CD43 expression in Ramos whole cell lysate.

## STORAGE

Store at 4° C, **\*\*DO NOT FREEZE\*\***. Stable for one year from the date of shipment. Non-hazardous. No MSDS required.

## RESEARCH USE

For research use only, not for use in diagnostic procedures.

## PROTOCOLS

See our web site at [www.scbt.com](http://www.scbt.com) or our catalog for detailed protocols and support products.

**MONOS**  
Satisfaction  
Guaranteed

Try **CD43 (DF-T1): sc-6256** or **CD43 (84-3C1): sc-21774**, our highly recommended monoclonal alternatives to CD43 (N-19).