

CD165 (3H1924): sc-70557

BACKGROUND

Interactions between T cells and epithelial cells of the thymus are very important for normal T cell development, and interactions between T cells and skin epidermal keratinocytes occur during inflammatory skin diseases and cutaneous T cell malignancies. CD165, also known as AD2, is a cell surface glycoprotein that localizes to the membrane of a subset of peripheral lymphocytes and monocytes, and is strongly expressed on T cell type acute lymphoblastic cells and on almost all platelets. CD165 localizes to spleen, thymocytes, thymic epithelial cells, central nervous system neurons, islet cells of the pancreas and bowman's capsule of the kidney. CD165 is important for adhesion of thymocytes to thymic epithelial cells.

REFERENCES

1. Doyle, C.T. 1976. The cytogenetics of 90 patients with idiopathic mental retardation/malformation syndromes and of 90 normal subjects. *Hum. Genet.* 33: 131-146.
2. Bruggers, C.S., Patel, D.D., Scarce, R.M., Whichard, L.P., Haynes, B.F. and Singer, K.H. 1995. AD2, a human molecule involved in the interaction of T cells with epidermal keratinocytes and thymic epithelial cells. *J. Immunol.* 154: 2012-2022.
3. Ross, J.A., Ansell, I., Hjelle, J.T., Anderson, J.D., Miller-Hjelle, M.A. and Dobbie, J.W. 1998. Phenotypic mapping of human mesothelial cells. *Adv. Perit. Dial.* 14: 25-30.
4. Sopp, P., Kwong, L.S. and Howard, C.J. 2001. Cross-reactivity with bovine cells of monoclonal antibodies submitted to the 6th International Workshop on Human Leukocyte Differentiation Antigens. *Vet. Immunol. Immunopathol.* 78: 197-206.
5. Kaymaz, F.F., Dagdeviren, A. and Asan, E. 2003. Antigenic profile of human thymus in concurrence with "Clusters of Thymic Epithelial Staining" classification. *Ann. Anat.* 185: 163-171.
6. Serebruany, V.L., Malinin, A.I., Oshrine, B.R., Sane, D.C., Takserman, A., Atar, D. and Hennekens, C.H. 2004. Lack of uniform platelet activation in patients after ischemic stroke and choice of antiplatelet therapy. *Thromb. Res.* 113: 197-204.
7. Atar, D., Malinin, A., Takserman, A., Pokov, A., van Zyl, L., Tanguay, J.F., Lesperance, F. and Serebruany, V. 2006. Escitalopram, but not its major metabolites, exhibits antiplatelet activity in humans. *J. Clin. Psychopharmacol.* 26: 172-177.

SOURCE

CD165 (3H1924) is a mouse monoclonal antibody raised against HSB cells of human origin.

PRODUCT

Each vial contains 200 µg IgG₁ kappa light chain in 1.0 ml of PBS with < 0.1% sodium azide and 0.1% gelatin.

CD165 (3H1924) is available conjugated to either phycoerythrin (sc-70557 PE) or fluorescein (sc-70557 FITC), 200 µg/ml, for IF, IHC(P) and FCM.

APPLICATIONS

CD165 (3H1924) is recommended for detection of CD165 of human origin by Western Blotting (starting dilution 1:200, dilution range 1:100-1:1000), immunoprecipitation [1-2 µg per 100-500 µg of total protein (1 ml of cell lysate)], immunofluorescence (starting dilution 1:50, dilution range 1:50-1:500) and flow cytometry (1 µg per 1 x 10⁶ cells).

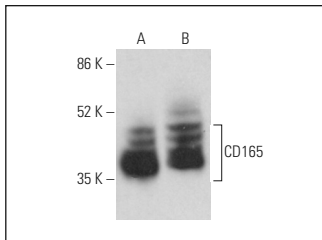
Molecular Weight of CD165: 37 kDa.

Positive Controls: Jurkat whole cell lysate: sc-2204, CCRF-CEM cell lysate: sc-2225 or MIA PaCa-2 cell lysate: sc-2285.

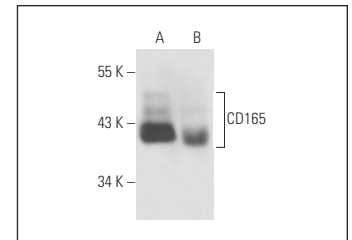
RECOMMENDED SUPPORT REAGENTS

To ensure optimal results, the following support reagents are recommended: 1) Western Blotting: use m-IgGκ BP-HRP: sc-516102 or m-IgGκ BP-HRP (Cruz Marker): sc-516102-CM (dilution range: 1:1000-1:10000), Cruz Marker™ Molecular Weight Standards: sc-2035, UltraCruz® Blocking Reagent: sc-516214 and Western Blotting Luminol Reagent: sc-2048. 2) Immunoprecipitation: use Protein A/G PLUS-Agarose: sc-2003 (0.5 ml agarose/2.0 ml). 3) Immunofluorescence: use m-IgGκ BP-FITC: sc-516140 or m-IgGκ BP-PE: sc-516141 (dilution range: 1:50-1:200) with UltraCruz® Mounting Medium: sc-24941 or UltraCruz® Hard-set Mounting Medium: sc-359850.

DATA



CD165 (3H1924): sc-70557. Western blot analysis of CD165 expression in Jurkat (A) and CCRF-CEM (B) whole cell lysates.



CD165 (3H1924): sc-70557. Western blot analysis of CD165 expression in Jurkat (A) and MIA PaCa-2 (B) whole cell lysates.

STORAGE

Store at 4° C, **DO NOT FREEZE**. Stable for one year from the date of shipment. Non-hazardous. No MSDS required.

RESEARCH USE

For research use only, not for use in diagnostic procedures.

PROTOCOLS

See our web site at www.scbt.com for detailed protocols and support products.