

CD42b (C-20): sc-7070

BACKGROUND

CD42a is a single-chain membrane glycoprotein that forms a noncovalent complex with CD42b. CD42b, also known as glycoprotein Ib α (GPIb α) is a membrane glycoprotein that is composed of α and β chains. The CD42b β chain is also designated CD42c, and is expressed on platelets and megakaryocytes. CD42a and CD42b are also present on platelets and megakaryocytes, and the complex is a major component of the platelet surface. The complex acts as a receptor for von Willebrand's factor and as a von Willebrand's factor-dependent adhesion receptor.

REFERENCES

- Lopez, J.A., Chung, D.W., Fujikawa, K., Hagen, F.S., Davie, E.W. and Roth, G.J. 1988. The α and β chains of human platelet glycoprotein Ib are both transmembrane proteins containing a leucine-rich amino acid sequence. *Proc. Natl. Acad. Sci. USA* 85: 2135-2139.
- Roth, G.J. 1992. Platelets and blood vessels: the adhesion event. *Immunol. Today* 13: 100-105.
- Hickey, M.J. and Roth, G.J. 1993. Characterization of the gene encoding human platelet glycoprotein IX. *J. Biol. Chem.* 268: 3438-3443.
- Kelly, M.D., Essex, D.W., Shapiro, S.S., Meloni, F.J., Druck, T., Huebner, K. and Konkle, B.A. 1994. Complementary DNA cloning of the alternatively expressed endothelial cell glycoprotein Ib β (GPIb β) and localization of the GPIb β gene to chromosome 22. *J. Clin. Invest.* 93: 2417-2424.
- Yagi, M., Edelhoff, S., Distechi, C.M. and Roth, G.J. 1994. Structural characterization and chromosomal location of the gene encoding human platelet glycoprotein Ib β . *J. Biol. Chem.* 269: 17424-17427.
- Lopez, J.A., Weisman, S., Sanan, D.A., Sih, T., Chambers, M. and Li, C.Q. 1994. Glycoprotein (GP) Ib β is the critical subunit linking GP Ib α and GP IX in the Gp Ib-IX complex. Analysis of partial complexes. *J. Biol. Chem.* 269: 23716-23721.
- Kunishima, S., Miura, H., Fukutani, H., Yoshida, H., Osumi, K., Kobayashi, S., Ohno, R. and Naoe, T. 1994. Bernard-Soulier syndrome Kagoshima: Ser 444 \rightarrow stop mutation of glycoprotein (GP) Ib α resulting in circulating truncated GPIb α and surface expression of GPIb β and GPIX. *Blood* 84: 3356-3362.

CHROMOSOMAL LOCATION

Genetic locus: GP1BA (human) mapping to 17p13.2.

SOURCE

CD42b (C-20) is an affinity purified goat polyclonal antibody raised against a peptide mapping to the C-terminus of CD42b of human origin.

PRODUCT

Each vial contains 200 μ g IgG in 1.0 ml of PBS with < 0.1% sodium azide and 0.1% gelatin.

Blocking peptide available for competition studies, sc-7070 P, (100 μ g peptide in 0.5 ml PBS containing < 0.1% sodium azide and 0.2% BSA).

APPLICATIONS

CD42b (C-20) is recommended for detection of CD42b α chain of human origin by Western Blotting (starting dilution 1:200, dilution range 1:100-1:1000), immunoprecipitation [1-2 μ g per 100-500 μ g of total protein (1 ml of cell lysate)], immunofluorescence (starting dilution 1:50, dilution range 1:50-1:500), immunohistochemistry (including paraffin-embedded sections) (starting dilution 1:50, dilution range 1:50-1:500) and solid phase ELISA (starting dilution 1:30, dilution range 1:30-1:3000).

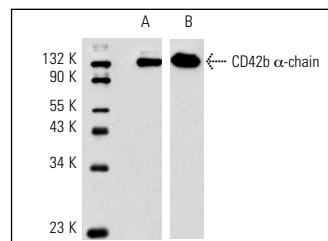
CD42b (C-20) is also recommended for detection of CD42b α chain in additional species, including equine.

Suitable for use as control antibody for CD42b siRNA (h): sc-42789, CD42b shRNA Plasmid (h): sc-42789-SH and CD42b shRNA (h) Lentiviral Particles: sc-42789-V.

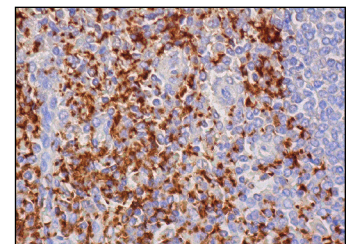
Molecular Weight of CD42b α : 143 kDa.

Positive Controls: human platelet whole cell lysate: sc-363773.

DATA



Western blot analysis of CD42b α -chain expression in human platelet whole cell lysates. Antibodies tested include CD42b (C-20): sc-7070 (A) and CD42b (N-19): sc-7071 (B).



CD42b (C-20): sc-7070. Immunoperoxidase staining of formalin fixed, paraffin-embedded human spleen tissue showing cytoplasmic staining of cells in red pulp.

STORAGE

Store at 4° C, ****DO NOT FREEZE****. Stable for one year from the date of shipment. Non-hazardous. No MSDS required.

RESEARCH USE

For research use only, not for use in diagnostic procedures.

PROTOCOLS

See our web site at www.scbt.com or our catalog for detailed protocols and support products.

MONOS
Satisfaction
Guaranteed

Try **CD42b (E-8): sc-271171** or **CD42b (PM6/40): sc-59051**, our highly recommended monoclonal alternatives to CD42b (C-20).