

DP-1 (2Q471): sc-70990

BACKGROUND

The human retinoblastoma gene product appears to play an important role in the negative regulation of cell proliferation. Functional inactivation of Rb can be mediated either through mutation or as a consequence of interaction with DNA tumor virus-encoded proteins. Of all the Rb associations described to date, the identification of a complex between Rb and the transcription factor E2F most directly implicates Rb in regulation of cell proliferation. E2F was originally identified through its role in transcriptional activation of the adenovirus E2 promoter. Sequences homologous to the E2F binding site have been found upstream of a number of genes that encode proteins with putative functions in the G₁ and S phases of the cell cycle. E2F-1 forms heterodimers with a second protein, designated DP-1, forming an "active" E2F transcriptional regulatory complex. Additional members of the E2F family include E2F-2, E2F-3, E2F-4, E2F-5 and DP-2.

REFERENCES

- Helin, K., et al. 1992. A cDNA encoding a pRB-binding protein with properties of the transcription factor E2F. *Cell* 70: 337-350.
- Nevins, J.R. 1992. E2F: a link between the Rb tumor suppressor protein and viral oncoproteins. *Science* 258: 424-429.
- Helin, K., et al. 1993. Heterodimerization of the transcription factors E2F-1 and DP-1 leads to cooperative transactivation. *Genes Dev.* 7: 1850-1861.
- Krek, W., et al. 1993. Binding to DNA and the retinoblastoma gene product promoted by complex formation of different E2F family members. *Science* 262: 1557-1560.
- Ginsberg, D., et al. 1994. E2F-4, a new member of the E2F transcription factor family, interacts with p107. *Genes Dev.* 8: 2665-2679.
- Beijersbergen, R.L., et al. 1994. E2F-4, a new member of the E2F gene family, has oncogenic activity and associates with p107 *in vivo*. *Genes Dev.* 8: 2680-2690.
- Zhang, Y. and Chellappan, S.P. 1995. Cloning and characterization of human DP-2, a novel dimerization partner of E2F. *Oncogene* 10: 2085-2093.

CHROMOSOMAL LOCATION

Genetic locus: TFDP1 (human) mapping to 13q34; Tfdp1 (mouse) mapping to 8 A1.1.

SOURCE

DP-1 (2Q471) is a mouse monoclonal antibody raised against full length DP-1 of human origin.

PRODUCT

Each vial contains 200 µg IgG_{2b} kappa light chain in 1.0 ml of PBS with < 0.1% sodium azide and 0.1% gelatin.

STORAGE

Store at 4° C, ****DO NOT FREEZE****. Stable for one year from the date of shipment. Non-hazardous. No MSDS required.

APPLICATIONS

DP-1 (2Q471) is recommended for detection of DP-1 of mouse, rat and human origin by Western Blotting (starting dilution 1:200, dilution range 1:100-1:1000), immunoprecipitation [1-2 µg per 100-500 µg of total protein (1 ml of cell lysate)] and immunofluorescence (starting dilution 1:50, dilution range 1:50-1:500).

Suitable for use as control antibody for DP-1 siRNA (h): sc-37813, DP-1 siRNA (m): sc-37814, DP-1 shRNA Plasmid (h): sc-37813-SH, DP-1 shRNA Plasmid (m): sc-37814-SH, DP-1 shRNA (h) Lentiviral Particles: sc-37813-V and DP-1 shRNA (m) Lentiviral Particles: sc-37814-V.

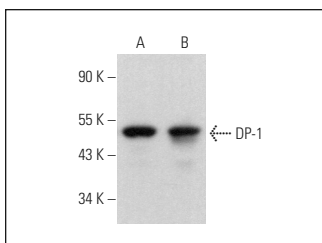
Molecular Weight of DP-1: 49 kDa.

Positive Controls: MOLT-4 cell lysate: sc-2233, Daudi cell lysate: sc-2415 or DP-1 (h2): 293T Lysate: sc-159192.

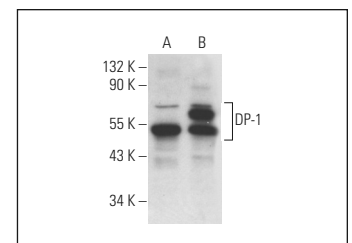
RECOMMENDED SUPPORT REAGENTS

To ensure optimal results, the following support reagents are recommended: 1) Western Blotting: use m-IgGκ BP-HRP: sc-516102 or m-IgGκ BP-HRP (Cruz Marker): sc-516102-CM (dilution range: 1:1000-1:10000), Cruz Marker™ Molecular Weight Standards: sc-2035, UltraCruz® Blocking Reagent: sc-516214 and Western Blotting Luminol Reagent: sc-2048. 2) Immunoprecipitation: use Protein A/G PLUS-Agarose: sc-2003 (0.5 ml agarose/2.0 ml). 3) Immunofluorescence: use m-IgGκ BP-FITC: sc-516140 or m-IgGκ BP-PE: sc-516141 (dilution range: 1:50-1:200) with UltraCruz® Mounting Medium: sc-24941 or UltraCruz® Hard-set Mounting Medium: sc-359850.

DATA



DP-1 (2Q471): sc-70990. Western blot analysis of DP-1 expression in Daudi (A) and MOLT-4 (B) whole cell lysates.



DP-1 (2Q471): sc-70990. Western blot analysis of DP-1 expression in non-transfected: sc-117752 (A) and human DP-1 transfected: sc-159192 (B) 293T whole cell lysates.

RESEARCH USE

For research use only, not for use in diagnostic procedures.

PROTOCOLS

See our web site at www.scbt.com for detailed protocols and support products.