

EGFR (3i4): sc-71032

BACKGROUND

The EGF receptor family comprises several related receptor tyrosine kinases that are frequently overexpressed in a variety of carcinomas. Members of this receptor family include EGFR (HER1), Neu (ErbB-2, HER2), ErbB-3 (HER3) and ErbB-4 (HER4), which form either homodimers or heterodimers upon ligand binding. Exons in the EGFR gene product are frequently either deleted or duplicated to produce deletion mutants (DM) or tandem duplication mutants (TDM), respectively, which are detected at various molecular weights. EGFR binds several ligands including epidermal growth factor (EGF), transforming growth factor α (TGF α), Amphiregulin and heparin binding-EGF (HB-EGF). Ligand binding promotes the internalization of EGFR via Clathrin-coated pits and its subsequent degradation in response to its intrinsic tyrosine kinase. EGFR is involved in organ morphogenesis and maintenance and repair of tissues, but upregulation of EGFR is associated with tumor progression. The oncogenic effects of EGFR include initiation of DNA synthesis, enhanced cell growth, invasion and metastasis. Abrogation of EGFR results in cell cycle arrest, apoptosis or dedifferentiation of cancer cells, suggesting that EGFR may be an effective therapeutic target.

CHROMOSOMAL LOCATION

Genetic locus: EGFR (human) mapping to 7p11.2; Egfr (mouse) mapping to 11 A2.

SOURCE

EGFR (3i4) is a mouse monoclonal antibody raised against amino acids 985-996 of EGFR of human origin.

PRODUCT

Each vial contains 200 μ g IgG $_1$ kappa light chain in 1.0 ml of PBS with < 0.1% sodium azide and 0.1% gelatin.

RESEARCH USE

For research use only, not for use in diagnostic procedures.

APPLICATIONS

EGFR (3i4) is recommended for detection of EGFR of mouse, rat and human origin by Western Blotting (starting dilution 1:200, dilution range 1:100-1:1000), immunoprecipitation [1-2 μ g per 100-500 μ g of total protein (1 ml of cell lysate)], immunofluorescence (starting dilution 1:50, dilution range 1:50-1:500) and immunohistochemistry (including paraffin-embedded sections) (starting dilution 1:50, dilution range 1:50-1:500).

Suitable for use as control antibody for EGFR siRNA (h): sc-29301, EGFR siRNA (m): sc-29302, EGFR siRNA (r): sc-108050, EGFR shRNA Plasmid (h): sc-29301-SH, EGFR shRNA Plasmid (m): sc-29302-SH, EGFR shRNA Plasmid (r): sc-108050-SH, EGFR shRNA (h) Lentiviral Particles: sc-29301-V, EGFR shRNA (m) Lentiviral Particles: sc-29302-V and EGFR shRNA (r) Lentiviral Particles: sc-108050-V.

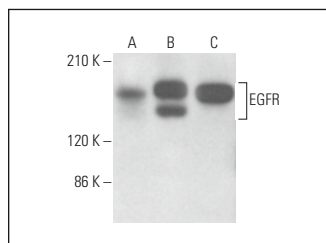
Molecular Weight of EGFR: 170 kDa.

Positive Controls: HeLa whole cell lysate: sc-2200, SK-BR-3 cell lysate: sc-2218 or c4 whole cell lysate: sc-364186.

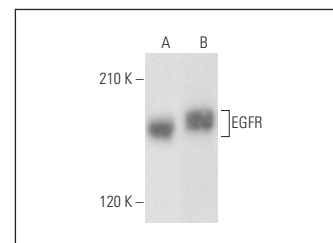
RECOMMENDED SUPPORT REAGENTS

To ensure optimal results, the following support reagents are recommended: 1) Western Blotting: use m-IgG κ BP-HRP: sc-516102 or m-IgG κ BP-HRP (Cruz Marker): sc-516102-CM (dilution range: 1:1000-1:10000), Cruz Marker™ Molecular Weight Standards: sc-2035, UltraCruz® Blocking Reagent: sc-516214 and Western Blotting Luminol Reagent: sc-2048. 2) Immunoprecipitation: use Protein A/G PLUS-Agarose: sc-2003 (0.5 ml agarose/2.0 ml). 3) Immunofluorescence: use m-IgG κ BP-FITC: sc-516140 or m-IgG κ BP-PE: sc-516141 (dilution range: 1:50-1:200) with UltraCruz® Mounting Medium: sc-24941 or UltraCruz® Hard-set Mounting Medium: sc-359850. 4) Immunohistochemistry: use m-IgG κ BP-HRP: sc-516102 with DAB, 50X: sc-24982 and Immunohistomount: sc-45086, or Organo/Limonene Mount: sc-45087.

DATA



EGFR (3i4): sc-71032. Western blot analysis of EGFR expression in HeLa (A), MCF7 (B) and c4 (C) whole cell lysates.



EGFR (3i4): sc-71032. Western blot analysis of EGFR expression in HeLa (A) and SK-BR-3 (B) whole cell lysates.

SELECT PRODUCT CITATIONS

- Balz, L.M., et al. 2012. The interplay of HER2/HER3/PI3K and EGFR/HER2/PLC- γ 1 signalling in breast cancer cell migration and dissemination. J. Pathol. 227: 234-244.
- Zhu, Y., et al. 2017. Application of nanosecond laser photolysis protein footprinting to study EGFR activation by EGF in cells. J. Proteome Res. 16: 2282-2293.

STORAGE

Store at 4° C, **DO NOT FREEZE**. Stable for one year from the date of shipment. Non-hazardous. No MSDS required.

PROTOCOLS

See our web site at www.scbt.com for detailed protocols and support products.



See **EGFR (A-10): sc-373746** for EGFR antibody conjugates, including AC, HRP, FITC, PE, and Alexa Fluor® 488, 546, 594, 647, 680 and 790.