

Fascin 1 (5G112): sc-71100

BACKGROUND

Cell adhesion to extracellular matrix is an important physiological stimulus for organization of the actin-based cytoskeleton. Adhesion to the matrix glycoprotein Thrombospondin-1 triggers the sustained formation of F-Actin microspikes that contain the Actin-bundling protein Fascin. These structures are also implicated in cell migration, which may be an important function of Thrombospondin-1 in tissue remodeling and wound repair. Fascin bundles Actin microfilaments within dynamic cellular structures such as microspikes, stress fibers and membrane ruffles. It may serve as a prognostic factor for abnormal ovarian epithelial pathology and may be a novel target for the treatment of ovarian cancer. An Actin-bundling protein, Fascin identifies dendritic cells in the blood and in tissues.

REFERENCES

1. Jaffe, R., et al. 1998. Fascin and the differential diagnosis of childhood histiocytic lesions. *Pediatr. Dev. Pathol.* 1: 216-221.
2. Adams, J.C. and Schwartz, M.A. 2000. Stimulation of Fascin spikes by Thrombospondin-1 is mediated by the GTPases Rac and Cdc42. *J. Cell Biol.* 150: 807-822.

CHROMOSOMAL LOCATION

Genetic locus: FSCN1 (human) mapping to 7p22.1; Fscn1 (mouse) mapping to 5 G2.

SOURCE

Fascin 1 (5G112) is a mouse monoclonal antibody raised against Fascin 1 purified from HeLa cells of human origin.

PRODUCT

Each vial contains 200 µg IgG₁ kappa light chain in 1.0 ml of PBS with < 0.1% sodium azide and 0.1% gelatin.

APPLICATIONS

Fascin 1 (5G112) is recommended for detection of Fascin 1 of mouse, rat and human origin by Western Blotting (starting dilution 1:200, dilution range 1:100-1:1000), immunoprecipitation [1-2 µg per 100-500 µg of total protein (1 ml of cell lysate)], immunofluorescence (starting dilution 1:50, dilution range 1:50-1:500) and immunohistochemistry (including paraffin-embedded sections) (starting dilution 1:50, dilution range 1:50-1:500).

Suitable for use as control antibody for Fascin 1 siRNA (h): sc-35359, Fascin 1 siRNA (m): sc-35360, Fascin 1 siRNA (r): sc-270625, Fascin 1 shRNA Plasmid (h): sc-35359-SH, Fascin 1 shRNA Plasmid (m): sc-35360-SH, Fascin 1 shRNA Plasmid (r): sc-270625-SH, Fascin 1 shRNA (h) Lentiviral Particles: sc-35359-V, Fascin 1 shRNA (m) Lentiviral Particles: sc-35360-V and Fascin 1 shRNA (r) Lentiviral Particles: sc-270625-V.

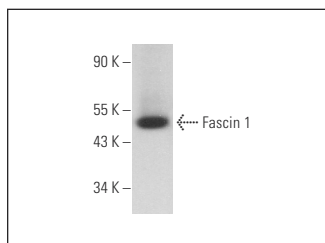
Molecular Weight of Fascin 1: 55 kDa.

Positive Controls: U-251-MG whole cell lysate: sc-364176, HeLa whole cell lysate: sc-2200 or K-562 whole cell lysate: sc-2203.

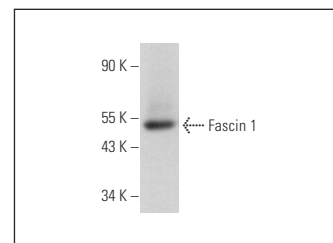
RECOMMENDED SUPPORT REAGENTS

To ensure optimal results, the following support reagents are recommended: 1) Western Blotting: use m-IgGκ BP-HRP: sc-516102 or m-IgGκ BP-HRP (Cruz Marker): sc-516102-CM (dilution range: 1:1000-1:10000), Cruz Marker™ Molecular Weight Standards: sc-2035, UltraCruz® Blocking Reagent: sc-516214 and Western Blotting Luminol Reagent: sc-2048. 2) Immunoprecipitation: use Protein A/G PLUS-Agarose: sc-2003 (0.5 ml agarose/2.0 ml). 3) Immunofluorescence: use m-IgGκ BP-FITC: sc-516140 or m-IgGκ BP-PE: sc-516141 (dilution range: 1:50-1:200) with UltraCruz® Mounting Medium: sc-24941 or UltraCruz® Hard-set Mounting Medium: sc-359850. 4) Immunohistochemistry: use m-IgGκ BP-HRP: sc-516102 with DAB, 50X: sc-24982 and Immunohistomount: sc-45086, or Organo/Limonene Mount: sc-45087.

DATA



Fascin 1 (5G112): sc-71100. Western blot analysis of Fascin 1 expression in K-562 whole cell lysate.



Fascin 1 (5G112): sc-71100. Western blot analysis of Fascin 1 expression in U-251-MG whole cell lysate.

SELECT PRODUCT CITATIONS

1. McNally, A.K. and Anderson, J.M. 2015. Phenotypic expression in human monocyte-derived interleukin-4-induced foreign body giant cells and macrophages *in vitro*: dependence on material surface properties. *J. Biomed. Mater. Res. A* 103: 1380-1390.
2. Richmond, A.M., et al. 2017. Fascin is associated with aggressive behavior and poor outcome in uterine carcinosarcoma. *Int. J. Gynecol. Cancer* 27: 1895-1903.

STORAGE

Store at 4° C, **DO NOT FREEZE**. Stable for one year from the date of shipment. Non-hazardous. No MSDS required.

RESEARCH USE

For research use only, not for use in diagnostic procedures.

PROTOCOLS

See our web site at www.scbt.com for detailed protocols and support products.



See **Fascin 1 (D-10): sc-46675** for Fascin 1 antibody conjugates, including AC, HRP, FITC, PE, and Alexa Fluor® 488, 546, 594, 647, 680 and 790.