

# HLA-DR (6A96): sc-71260

## BACKGROUND

Major histocompatibility complex (MHC) class II molecules destined for presentation to CD4<sup>+</sup> helper T cells is determined by two key events. These events include the dissociation of class II-associated invariant chain peptides (CLIP) from an antigen binding groove in MHC II- $\alpha/\beta$  dimers through the activity of MHC molecules HLA-DM and -DO, and subsequent peptide antigen binding. Accumulating in endosomal/lysosomal compartments and on the surface of B cells, HLA-DM, -DO molecules regulate the dissociation of CLIP and the subsequent binding of exogenous peptides to HLA class II molecules (HLA-DR, -DQ and -DP) by sustaining a conformation that favors peptide exchange. RFLP analysis of HLA-DM genes from rheumatoid arthritis (RA) patients suggests that certain polymorphisms are genetic factors for RA susceptibility. HLA-B belongs to the HLA class I heavy chain paralogs. Class I molecules play a central role in the immune system by presenting peptides derived from the endoplasmic reticulum lumen. HLA-B and -C can form heterodimers consisting of a membrane-anchored heavy chain and a light chain ( $\beta$ -2-Microglobulin). Polymorphisms yield hundreds of HLA-B and -C alleles.

## REFERENCES

- Horejsi, V., et al. 1986. Characterization of seven new monoclonal antibodies against human DR, DR + DP and DQ1 + DQ3 antigens. *Tissue Antigens* 28: 288-297.
- Horejsi, V., et al. 1986. Monoclonal antibodies against human leucocyte antigens. I. Antibodies against  $\beta$ -2-Microglobulin, immunoglobulin  $\kappa$  light chains, HLA-DR-like antigens, T8 antigen, T1 antigen, a monocyte antigen and a pan-leucocyte antigen. *Folia Biol.* 32: 12-25.
- Kropshofer, H., et al. 1998. A role for HLA-DO as a co-chaperone of HLA-DM in peptide loading of MHC class II molecules. *EMBO J.* 17: 2971-2981.
- Siegmund, T., et al. 1999. HLA-DMA and HLA-DMB alleles in German patients with type 1 diabetes mellitus. *Tissue Antigens* 54: 291-294.
- Arndt, S.O., et al. 2000. Functional HLA-DM on the surface of B cells and immature dendritic cells. *EMBO J.* 19: 1241-1251.
- Brunet, A., et al. 2000. Functional characterization of a lysosomal sorting motif in the cytoplasmic tail of HLA-DO $\beta$ . *J. Biol. Chem.* 275: 37062-37071.
- Doebele, C.R., et al. 2000. Determination of the HLA-DM interaction site on HLA-DR molecules. *Immunity* 13: 517-527.
- Louis-Pence, P., et al. 2000. The downregulation of HLA-DM gene expression in rheumatoid arthritis is not related to their promoter polymorphism. *J. Immunol.* 16: 4861-4869.
- Toussiro, E., et al. 2000. The association of HLA-DM genes with rheumatoid arthritis in Eastern France. *Hum. Immunol.* 61: 303-308.

## SOURCE

HLA-DR (6A96) is a mouse monoclonal antibody raised against activated peripheral blood mononuclear cells of human origin.

## PRODUCT

Each vial contains 200  $\mu$ g IgG<sub>2b</sub> kappa light chain in 1.0 ml of PBS with < 0.1% sodium azide and 0.1% gelatin.

## APPLICATIONS

HLA-DR (6A96) is recommended for detection of HLA-DR of mouse, rat and human origin by Western Blotting (starting dilution to be determined by researcher, dilution range 1:10-1:200), immunoprecipitation [1-2  $\mu$ g per 100-500  $\mu$ g of total protein (1 ml of cell lysate)] and flow cytometry (1  $\mu$ g per  $1 \times 10^6$  cells).

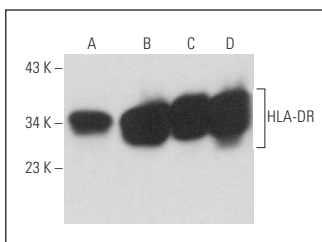
Molecular Weight of HLA-DR mature chain: 30 kDa.

Positive Controls: HLA-DR $\beta$ 1 (h3): 293T Lysate: sc-115102, Raji whole cell lysate: sc-364236 or BJAB whole cell lysate: sc-2207.

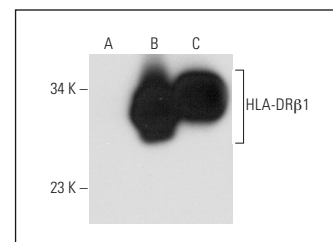
## RECOMMENDED SUPPORT REAGENTS

To ensure optimal results, the following support reagents are recommended: 1) Western Blotting: use m-IgG $\kappa$  BP-HRP: sc-516102 or m-IgG $\kappa$  BP-HRP (Cruz Marker): sc-516102-CM (dilution range: 1:1000-1:10000), Cruz Marker<sup>™</sup> Molecular Weight Standards: sc-2035, UltraCruz<sup>®</sup> Blocking Reagent: sc-516214 and Western Blotting Luminol Reagent: sc-2048. 2) Immunoprecipitation: use Protein A/G PLUS-Agarose: sc-2003 (0.5 ml agarose/2.0 ml).

## DATA



HLA-DR (6A96): sc-71260. Western blot analysis of HLA-DR expression in U-698-M (A), Ramos (B), GA-10 (C) and Raji (D) whole cell lysates.



HLA-DR (6A96): sc-71260. Western blot analysis of HLA-DR $\beta$ 1 expression in non-transfected 293T: sc-117752 (A), human HLA-DR $\beta$ 1 transfected 293T: sc-115102 (B) and BJAB (C) whole cell lysates.

## STORAGE

Store at 4° C, **\*\*DO NOT FREEZE\*\***. Stable for one year from the date of shipment. Non-hazardous. No MSDS required.

## RESEARCH USE

For research use only, not for use in diagnostic procedures.

## PROTOCOLS

See our web site at [www.scbt.com](http://www.scbt.com) for detailed protocols and support products.

## CONJUGATES

See **HLA-DR (520B): sc-69673** for HLA-DR antibody conjugates, including AC, HRP, FITC, PE, and Alexa Fluor<sup>®</sup> 488, 546, 594, 647, 680 and 790.