



Cla4 (γ-371): sc-7168

BACKGROUND

Extracellular pheromones bind to cell surface receptors and stimulate the activation of the kinase Ste20. This leads to the activation of the MAPKKK Ste11 and the subsequent members of this MAP kinase cascade, Ste7, Fus3 (also called Dac2) and Kss1. These MAP kinases activate Ste12 and Far1, which effect transcriptional and morphological changes necessary for mating. Cdc42, a small GTP-binding protein, is thought to activate Ste20. Cdc42 also plays a role in the polarization of budding. Cla4, a homolog of Ste20, interacts with Cdc42 and is also involved in budding and cytokinesis. Cdc11 is also required for cytokinesis and is present at the bud neck during cell division. The kinase Elm1 regulates morphologic differentiation and is involved in controlling pseudohyphal growth.

REFERENCES

1. Errede, B. and Ammerer, G. 1989. Ste12, a protein involved in cell-type-specific transcription and signal transduction in yeast, is part of protein-DNA complexes. *Genes Dev.* 3: 1349-1361.
2. Johnson, D.I. and Pringle, J.R. 1990. Molecular characterization of Cdc42, a *Saccharomyces cerevisiae* gene involved in the development of cell polarity. *J. Cell Biol.* 111: 143-152.
3. Blacketer, M.J., Koehler, C.M., Coats, S.G., Myers, A.M., and Madaule, P. 1993. Regulation of dimorphism in *Saccharomyces cerevisiae*: involvement of the novel protein kinase homolog Elm1p and protein phosphatase 2A. *Mol. Cell. Biol.* 13: 5567-5581.
4. Peter, M., Gartner, A., Horecka, J., Ammerer, G., and Herskowitz, I. 1993. Far1 links the signal transduction pathway to the cell cycle machinery in yeast. *Cell* 73: 747-760.
5. Ferguson, B., Horecka, J., Printen, J., Schultz, J., Stevenson, B.J., and Sprague, G.F. Jr. 1994. The yeast pheromone response pathway: new insights into signal transmission. *Cell. Mol. Biol. Res.* 40: 223-228.
6. Cvrckova, F., De Virgilio, C., Manser, E., Pringle, J.R., and Nasmyth, K. 1995. Ste20-like protein kinases are required for normal localization of cell growth and for cytokinesis in budding yeast. *Genes Dev.* 9: 1817-1830.
7. Longtine, M.S., DeMarini, D.J., Valencik, M.L., Al-Awar, O.S., Fares, H., De Virgilio, C., and Pringle, J.R. 1996. The septins: roles in cytokinesis and other processes. *Curr. Opin. Cell Biol.* 8: 106-119.
8. Peter, M., Neiman, A.M., Park H.O., van Lohuizen, M., and Herskowitz, I. 1996. Functional analysis of the interaction between the small GTP-binding protein Cdc42 and the Ste20 protein kinase in yeast. *EMBO J.* 15: 7046-7059.
9. Koehler, C.M. and Myers, A.M. 1997. Serine-threonine protein kinase activity of Elm1p, a regulator of morphologic differentiation in *Saccharomyces cerevisiae*. *FEBS Lett.* 408: 109-114

SOURCE

Cla4 (γ-371) is a rabbit polyclonal antibody raised against amino acids 140-511 of Cla4 of *Saccharomyces cerevisiae* origin.

PRODUCT

Each vial contains 200 µg IgG in 1.0 ml of PBS with < 0.1% sodium azide and 0.1% gelatin.

APPLICATIONS

Cla4 (γ-371) is recommended for detection of Cla4 of *Saccharomyces cerevisiae* origin by Western Blotting (starting dilution 1:200, dilution range 1:100-1:1000), immunoprecipitation [1-2 µg per 100-500 µg of total protein (1 ml of cell lysate)] and solid phase ELISA (starting dilution 1:30, dilution range 1:30-1:3000).

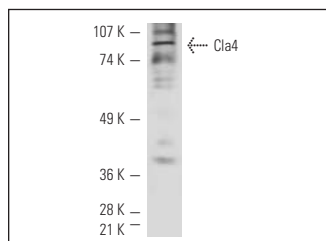
Molecular Weight of Cla4: 65/101 kDa.

Positive Controls: *S.cerevisiae* whole cell lysate.

RECOMMENDED SECONDARY REAGENTS

To ensure optimal results, the following support (secondary) reagents are recommended: 1) Western Blotting: use goat anti-rabbit IgG-HRP: sc-2004 (dilution range: 1:2000-1:100,000) or Cruz Marker™ compatible goat anti-rabbit IgG-HRP: sc-2030 (dilution range: 1:2000-1:5000), Cruz Marker™ Molecular Weight Standards: sc-2035, TBS Blotto A Blocking Reagent: sc-2333 and Western Blotting Luminol Reagent: sc-2048. 2) Immunoprecipitation: use Protein A/G PLUS-Agarose: sc-2003 (0.5 ml agarose/ 2.0 ml).

DATA



Cla4 (γ-371): sc-7168. Western blot analysis of Cla4 expression in *S. cerevisiae* whole cell lysate.

STORAGE

Store at 4° C, **DO NOT FREEZE**. Stable for one year from the date of shipment. Non-hazardous. No MSDS required.

RESEARCH USE

For research use only, not for use in diagnostic procedures.

PROTOCOLS

See our web site at www.scbt.com or our catalog for detailed protocols and support products.