

# Jun B (210): sc-73



The Power to Question

## BACKGROUND

The c-Jun proto-oncogene was first identified as the cellular homolog of the avian sarcoma virus v-Jun oncogene. The c-Jun protein along with c-Fos is a component of the AP-1 transcriptional complex. c-Jun can form either Jun/Jun homodimers or Jun/Fos heterodimers via the leucine repeats in both proteins. Homo- and heterodimers bind to the TGACTCA consensus sequence present in numerous promoters and initially identified as the phorbol ester tumor promoter response element (TRE). Two additional genes, Jun B and Jun D have been shown to be almost identical to c-Jun in their C-terminal regions, which are involved in dimerization and DNA binding, whereas their N-terminal domains, which are involved in transcriptional activation, diverge. All three form heterodimers among themselves and with c-Fos and other members of the Fos gene family.

## CHROMOSOMAL LOCATION

Genetic locus: JUNB (human) mapping to 19p13.2; Junb (mouse) mapping to 8 C3.

## SOURCE

Jun B (210) is an affinity purified rabbit polyclonal antibody raised against a peptide mapping near the C-terminus of Jun B of mouse origin.

## PRODUCT

Each vial contains 200 µg IgG in 1.0 ml of PBS with < 0.1% sodium azide and 0.1% gelatin.

Blocking peptide available for competition studies, sc-73 P, (100 µg peptide in 0.5 ml PBS containing < 0.1% sodium azide and 0.2% BSA).

Available as TransCruz reagent for Gel Supershift and ChIP applications, sc-73 X, 200 µg/0.1 ml.

## APPLICATIONS

Jun B (210) is recommended for detection of Jun B of mouse, rat and human origin by Western Blotting (starting dilution 1:200, dilution range 1:100-1:1000) and immunoprecipitation [1-2 µg per 100-500 µg of total protein (1 ml of cell lysate)].

Suitable for use as control antibody for Jun B siRNA (h): sc-35726, Jun B siRNA (m): sc-35727, Jun B shRNA Plasmid (h): sc-35726-SH, Jun B shRNA Plasmid (m): sc-35727-SH, Jun B shRNA (h) Lentiviral Particles: sc-35726-V and Jun B shRNA (m) Lentiviral Particles: sc-35727-V.

Jun B (210) X TransCruz antibody is recommended for Gel Supershift and ChIP applications.

Molecular Weight of Jun B: 39 kDa.

Positive Controls: Jun B (h2): 293T Lysate: sc-170824, Jun B (m): 293T Lysate: sc-121169 or NIH/3T3 nuclear extract: sc-2138.

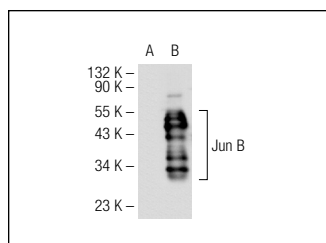
## STORAGE

Store at 4° C, **\*\*DO NOT FREEZE\*\***. Stable for one year from the date of shipment. Non-hazardous. No MSDS required.

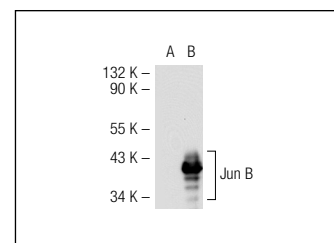
## RESEARCH USE

For research use only, not for use in diagnostic procedures.

## DATA



Jun B (210): sc-73. Western blot analysis of Jun B expression in non-transfected: sc-117752 (A) and human Jun B transfected: sc-170824 (B) 293T whole cell lysates.



Jun B (210): sc-73. Western blot analysis of Jun B expression in non-transfected: sc-117752 (A) and mouse Jun B transfected: sc-121169 (B) 293T whole cell lysates.

## SELECT PRODUCT CITATIONS

- Geimonen, E., et al. 1998. Elevated connexin-43 expression in term human myometrium correlates with elevated c-Jun expression and is independent of myometrial estrogen receptors. *J. Clin. Endocrinol. Metab.* 83: 1177-1185.
- Singh, N.K., et al. 2010. AP-1 (Fra-1/c-Jun)-mediated induction of expression of matrix metalloproteinase-2 is required for 15S-hydroxyeicosatetraenoic acid-induced angiogenesis. *J. Biol. Chem.* 285: 16830-16843.
- Mishra, A., et al. 2010. Transactivation and expression patterns of Jun and Fos/AP-1 super-family proteins in human oral cancer. *Int. J. Cancer* 126: 819-829.
- Son, Y.O., et al. 2010. Over-expression of JunB inhibits mitochondrial stress and cytotoxicity in human lymphoma cells exposed to chronic oxidative stress. *BMB Rep.* 43: 57-61.
- Lappas, M., et al. 2011. MAPK and AP-1 proteins are increased in term pre-labour fetal membranes overlying the cervix: regulation of enzymes involved in the degradation of fetal membranes. *Placenta* 32: 1016-1025.
- Tullai, J.W., et al. 2011. AP-1 is a component of the transcriptional network regulated by GSK-3 in quiescent cells. *PLoS ONE* 6: e20150.
- Debinski, W. and Gibo, D.M. 2011. Fos-related antigen 1 (Fra-1) pairing with and transactivation of JunB in GBM cells. *Cancer Biol. Ther.* 11: 254-262.
- del Blanco, B., et al. 2012. Tcra enhancer activation by inducible transcription factors downstream of pre-TCR signaling. *J. Immunol.* 188: 3278-3293.

**MONOS**  
Satisfaction  
Guaranteed

Try **Jun B (C-11): sc-8051** or **Jun B (G-9): sc-398061**, our highly recommended monoclonal alternatives to Jun B (210). Also, for AC, HRP, FITC, PE, Alexa Fluor® 488 and Alexa Fluor® 647 conjugates, see **Jun B (C-11): sc-8051**.