

Troponin T-C (1.BB.156): sc-73238

BACKGROUND

Actin is a highly conserved protein that is expressed in all eukaryotic cells. Actin filaments can form both stable and labile structures and are crucial components of microvilli and the contractile apparatus of muscle cells. Myosin is a hexamer of two heavy chains (MHC) and four light chains (MLC) that interacts with Actin to generate the force for diverse cellular movements, including cytokinesis, phagocytosis and muscle contraction. Troponin facilitates the interaction between Actin and Myosin by binding to calcium. Troponin is made up of at least two subunits, which are divergent in cardiac muscle, fast skeletal muscle and slow skeletal muscle. Structures of skeletal muscle troponin are composed of Troponin C (the sensor), Troponin I (the regulator) and Troponin T (the link to the muscle thin filament). Troponin C is dumbbell-shaped and has a hydrophobic pocket that increases the contractile force of muscle fibers. Troponin C has two isoforms: fast and slow. Fast Troponin C has two calcium binding sites, while slow/cardiac Troponin C has a single calcium binding site.

REFERENCES

1. Katrukha, A.G., Bereznikova, A.V., Esakova, T.V., Pettersson, K., Lovgren, T., Severina, M.E., Pulkki, K., Vuopio-Pulkki, L.M. and Gusev, N.B. 1997. Troponin I is released in bloodstream of patients with acute myocardial infarction not in free form but as complex. *Clin. Chem.* 43: 1379-1385.
2. Wu, A.H., Feng, Y.J., Moore, R., Apple, F.S., McPherson, P.H., Buechler, K.F. and Bodor, G. 1998. Characterization of cardiac Troponin subunit release into serum after acute myocardial infarction and comparison of assays for Troponin T and I. American association for clinical chemistry sub-committee on cTnI standardization. *Clin. Chem.* 44: 1198-1208.
3. Labugger, R., Organ, L., Collier, C., Atar, D. and Van Eyk, J.E. 2000. Extensive acute myocardial infarction. *Circulation* 102: 1221-1226.
4. Hamm, C.W. 2001. Acute coronary syndromes. The diagnostic role of troponins. *Thromb. Res.* 103: S63-S69.
5. Sarko, J. and Pollack, C.V. 2002. Cardiac troponins. *J. Emerg. Med.* 23: 57-65.
6. Gomes, A.V., Potter, J.D. and Szczesna-Cordary, D. 2003. The role of troponins in muscle contraction. *IUBMB Life* 54: 323-333.

CHROMOSOMAL LOCATION

Genetic locus: TNNT2 (human) mapping to 1q32.1.

SOURCE

Troponin T-C (1.BB.156) is a mouse monoclonal antibody raised against full length cardiac Troponin T of human origin, with epitope mapping to amino acids 1-60.

PRODUCT

Each vial contains 100 µg IgG₁ in 1.0 ml PBS with < 0.1% sodium azide and 0.1% gelatin.

APPLICATIONS

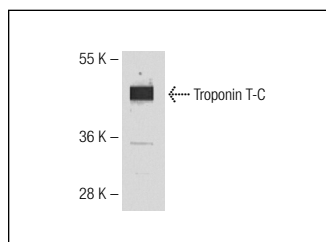
Troponin T-C (1.BB.156) is recommended for detection of cardiac muscle troponin T of human origin by Western Blotting (starting dilution 1:200, dilution range 1:100-1:1000) and immunoprecipitation [1-2 µg per 100-500 µg of total protein (1 ml of cell lysate)].

Suitable for use as control antibody for Troponin T-C siRNA (h): sc-36740, Troponin T-C shRNA Plasmid (h): sc-36740-SH and Troponin T-C shRNA (h) Lentiviral Particles: sc-36740-V.

Molecular Weight of Troponin T-C: 39 kDa.

Positive Controls: human heart extract: sc-363763.

DATA



Troponin T-C (1.BB.156): sc-73238. Western blot analysis of Troponin T-C expression in human heart tissue extract.

STORAGE

Store at 4° C, ****DO NOT FREEZE****. Stable for one year from the date of shipment. Non-hazardous. No MSDS required.

RESEARCH USE

For research use only, not for use in diagnostic procedures.

PROTOCOLS

See our web site at www.scbt.com for detailed protocols and support products.



See **Troponin T-C (CT3): sc-20025** for Troponin T-C antibody conjugates, including AC, HRP, FITC, PE, Alexa Fluor[®] 488 and Alexa Fluor[®] 647.