

CCL27 (DR33): sc-73787

BACKGROUND

Cutaneous T cell-attracting chemokine CCL27 (also designated CTACK, ILC and ALP) is a member of the chemokine superfamily and the subfamily of β or C-C chemokines that binds chemokine receptor CCR10 (GPR-2). Chemokines are a superfamily of small secreted proteins that attract their targets by interacting with G protein-coupled receptors expressed on the migrating cell. CCL27 and CCR10 are involved in skin homeostasis and inflammatory response. CCL27 is found in human keratinocytes and mouse epidermis; CCR10 is expressed by melanocytes, dermal fibroblasts and dermal microvascular endothelial cells and in T cells, as well as in skin-derived Langerhans cells. CCL27 is involved in the preferential migration and recruitment of cutaneous lymphocyte-associated antigen CLA⁺ memory lymphocytes.

REFERENCES

1. Baggiolini, M. 1998. Chemokines and leukocyte traffic. *Nature* 392: 565-568.
2. Morales, J., et al. 1999. CTACK, a skin-associated chemokine that preferentially attracts skin-homing memory T cells. *Proc. Natl. Acad. Sci. USA* 96: 14470-14475.
3. Ishikawa-Mochizuki, I., et al. 1999. Molecular cloning of a novel C-C chemokine, interleukin-11 receptor α -locus chemokine (ILC), which is located on chromosome 9p13 and a potential homologue of a C-C chemokine encoded by molluscum contagiosum virus. *FEBS Lett.* 460: 544-548.
4. Hromas, R., et al. 1999. Isolation of ALP, a novel divergent murine C-C chemokine with a unique carboxy-terminal extension. *Biochem. Biophys. Res. Commun.* 258: 737-40.
5. Zlotnik, A., et al. 1999. Recent advances in chemokines and chemokine receptors. *Crit. Rev. Immunol.* 19: 1-47.

CHROMOSOMAL LOCATION

Genetic locus: Ccl27a (mouse) mapping to 4 A5.

SOURCE

CCL27 (DR33) is a rat monoclonal antibody raised against full length recombinant CCL27 of mouse origin.

PRODUCT

Each vial contains 100 μ g IgG_{2a} in 1.0 ml of PBS with < 0.1% sodium azide and protein stabilizer.

STORAGE

Store at 4° C, ****DO NOT FREEZE****. Stable for one year from the date of shipment. Non-hazardous. No MSDS required.

PROTOCOLS

See our web site at www.scbt.com for detailed protocols and support products.

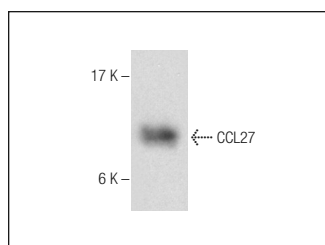
APPLICATIONS

CCL27 (DR33) is recommended for detection of CCL27 of mouse origin by Western Blotting (starting dilution 1:200, dilution range 1:100-1:1000), immuno-precipitation [1-2 μ g per 100-500 μ g of total protein (1 ml of cell lysate)], immunofluorescence (starting dilution 1:50, dilution range 1:50-1:500), immunohistochemistry (including paraffin-embedded sections) (starting dilution 1:50, dilution range 1:50-1:500) and solid phase ELISA (starting dilution 1:30, dilution range 1:30-1:3000).

Suitable for use as control antibody for CCL27 siRNA (m): sc-39347, CCL27 shRNA Plasmid (m): sc-39347-SH and CCL27 shRNA (m) Lentiviral Particles: sc-39347-V.

Molecular Weight of CCL27: 10 kDa.

DATA



CCL27 (DR33): sc-73787. Western blot analysis of mouse recombinant CCL27.

RESEARCH USE

For research use only, not for use in diagnostic procedures.