

Endoglycan (Y122): sc-73935

BACKGROUND

Endoglycan, also known as podocalyxin-like 2, exists as a disulfide-dependent homodimer and belongs to the CD34 family of proteins. Endoglycan is a proteoglycan modified with chondroitin sulfate chains and (with appropriate posttranslational modifications) functions as an L-Selectin ligand, interacting via sulfation on two tyrosine residues. Endoglycan contains a membrane proximal globular domain, a single-pass transmembrane domain, a mucin-like domain and a highly acidic N-terminal with O-linked sLex structures. It is widely expressed, with distribution including endothelial cells, hematopoietic precursors and leukocyte subpopulations. Endoglycan is similar to PSGL-1 in that it also exhibits catch-slip transitional bonds. These bonds help to mediate the rolling and tethering of circulating leukocytes on vascular surfaces, typically during immune surveillance and inflammation. The ligand activity of Endoglycan is dependent on sialylation and fucosylation and may mediate adhesion events.

REFERENCES

1. Sasseti, C., Van Zante, A. and Rosen, S.D. 2000. Identification of Endoglycan, a member of the CD34/podocalyxin family of sialomucins. *J. Biol. Chem.* 275: 9001-9010.
2. Simmons, P.J., Levesque, J.P. and Haylock, D.N. 2001. Mucin-like molecules as modulators of the survival and proliferation of primitive hematopoietic cells. *Ann. N.Y. Acad. Sci.* 938: 196-206.
3. Fieger, C.B., Sasseti, C.M. and Rosen, S.D. 2003. Endoglycan, a member of the CD34 family, functions as an L-Selectin ligand through modification with tyrosine sulfation and sialyl Lewis x. *J. Biol. Chem.* 278: 27390-27398.
4. Kerosuo, L., Juvonen, E., Alitalo, R., Gylling, M., Kerjaschki, D. and Miettinen, A. 2004. Podocalyxin in human haematopoietic cells. *Br. J. Haematol.* 124: 809-818.
5. Sarangapani, K.K., Yago, T., Klopocki, A.G., Lawrence, M.B., Fieger, C.B., Rosen, S.D., McEver, R.P. and Zhu, C. 2004. Low force decelerates L-Selectin dissociation from P-Selectin glycoprotein ligand-1 and Endoglycan. *J. Biol. Chem.* 279: 2291-2298.
6. van der Zwaag, B., Burbach, J.P., Scharfe, C., Oefner, P.J., Brunner, H.G., Padberg, G.W. and van Bokhoven, H. 2005. Identifying new candidate genes for hereditary facial paresis on chromosome 3q21-q22 by RNA *in situ* hybridization in mouse. *Genomics* 86: 55-67.
7. McEver, R.P. 2005. A sulfated address for lymphocyte homing. *Nat. Immunol.* 6: 1067-1069.
8. Furness, S.G. and McNagny, K. 2006. Beyond mere markers: functions for CD34 family of sialomucins in hematopoiesis. *Immunol. Res.* 34: 13-32.

CHROMOSOMAL LOCATION

Genetic locus: PODXL2 (human) mapping to 3q21.3.

SOURCE

Endoglycan (Y122) is a mouse monoclonal antibody raised against the extracellular domain of Endoglycan of human origin.

PRODUCT

Each vial contains 100 µg IgG_{2b} in 1.0 ml PBS with < 0.1% sodium azide and protein stabilizer.

APPLICATIONS

Endoglycan (Y122) is recommended for detection of Endoglycan of human origin by Western Blotting (starting dilution 1:200, dilution range 1:100-1:1000) and immunoprecipitation [1-2 µg per 100-500 µg of total protein (1 ml of cell lysate)].

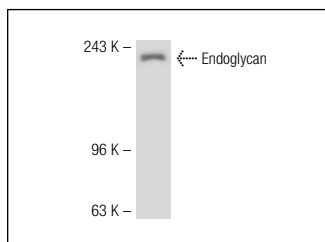
Suitable for use as control antibody for Endoglycan siRNA (h): sc-72322, Endoglycan shRNA Plasmid (h): sc-72322-SH and Endoglycan shRNA (h) Lentiviral Particles: sc-72322-V.

Molecular Weight of reduced Endoglycan: 150 kDa

Molecular Weight of non-reduced Endoglycan: 250 kDa.

Positive Controls: K-562 whole cell lysate: sc-2203, HL-60 whole cell lysate: sc-2209 or HEL 92.1.7 cell lysate: sc-2270.

DATA



Endoglycan (Y122): sc-73935. Western blot analysis of Endoglycan expression in K-562 whole cell lysate.

STORAGE

Store at 4° C, ****DO NOT FREEZE****. Stable for one year from the date of shipment. Non-hazardous. No MSDS required.

RESEARCH USE

For research use only, not for use in diagnostic procedures.

PROTOCOLS

See our web site at www.scbt.com for detailed protocols and support products.