

Kremen-1 (R17-2): sc-74206

BACKGROUND

The Wnt genes are a group of well conserved, cysteine-rich secreted glycoproteins that are required for numerous developmental processes including embryogenesis, asymmetric cell division and central nervous system (CNS) patterning. The association of the Wnt protein with the seven membrane spanning receptor frizzled activates dishevelled, which downregulates glycogen synthase kinase (GSK) through serine phosphorylation. Reduced levels of active GSK causes the accumulation of β -catenin and subsequent regulation of developmentally significant Wnt target genes. Wnt antagonists, Dickkopf (which includes Dkk1-4), frizzled-related protein (sFRP), Soggy-1, Kremen-1 and Wnt inhibitory factor-1 (WIF-1) are necessary to ensure normal spatial and temporal patterns of Wnt activity during developmental processes.

REFERENCES

1. Krasnow, R.E., Wong, L.L. and Adler, P.N. 1995. Dishevelled is a component of the frizzled signaling pathway in *Drosophila*. *Development* 121: 4095-4102.
2. Cadigan, K.M. and Nusse, R. 1997. Wnt signaling: a common theme in animal development. *Genes Dev.* 11: 3286-3305.
3. Sakanaka, C., Weiss, J.B. and Williams, L.T. 1998. Bridging of β -catenin and glycogen synthase kinase-3 β by Axin and inhibition of β -catenin-mediated transcription. *Proc. Natl. Acad. Sci. USA* 95: 3020-3023.
4. Glinka, A., Wu, W., Delius, H., Monaghan, A.P., Blumenstock, C. and Niehrs, C. 1998. Dickkopf-1 is a member of a new family of secreted proteins and functions in head induction. *Nature* 391: 357-362.
5. Fedi, P., Bafico, A., Nieto Soria, A., Burgess, W.H., Miki, T., Bottaro, D.P., Kraus, M.H. and Aaronson, S.A. 1999. Isolation and biochemical characterization of the human Dkk-1 homologue, a novel inhibitor of mammalian Wnt signaling. *J. Biol. Chem.* 274: 19465-19472.
6. Etheridge, S.L., Spencer, G.J., Heath, D.J. and Genever, P.G. 2004. Expression profiling and functional analysis of Wnt signaling mechanisms in mesenchymal stem cells. *Stem Cells* 22: 849-860.
7. Kulkarni, N.H., Halladay, D.L., Miles, R.R., Gilbert, L.M., Frolik, C.A., Galvin, R.J., Martin, T.J., Gillespie, M.T. and Onyia, J.E. 2005. Effects of parathyroid hormone on Wnt signaling pathway in bone. *J. Cell. Biochem.* 95: 1178-1190.

CHROMOSOMAL LOCATION

Genetic locus: KREMEN1 (human) mapping to 22q12.1; Kremen1 (mouse) mapping to 11 A1.

SOURCE

Kremen-1 (R17-2) is a rat monoclonal antibody raised against the extracellular domain of Kremen-1 of mouse origin.

PRODUCT

Each vial contains 100 μ g IgG_{2a} in 1.0 ml PBS with < 0.1% sodium azide and protein stabilizer.

APPLICATIONS

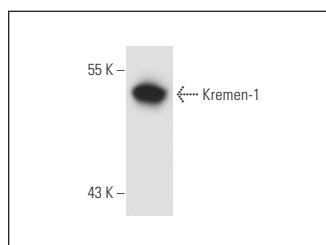
Kremen-1 (R17-2) is recommended for detection of Kremen-1 of mouse, rat and human origin by Western Blotting (starting dilution 1:200, dilution range 1:100-1:1000) and immunoprecipitation [1-2 μ g per 100-500 μ g of total protein (1 ml of cell lysate)]; non cross-reactive with Kremen-2.

Suitable for use as control antibody for Kremen-1 siRNA (h): sc-60899, Kremen-1 siRNA (m): sc-60900, Kremen-1 shRNA Plasmid (h): sc-60899-SH, Kremen-1 shRNA Plasmid (m): sc-60900-SH, Kremen-1 shRNA (h) Lentiviral Particles: sc-60899-V and Kremen-1 shRNA (m) Lentiviral Particles: sc-60900-V.

Molecular Weight of Kremen-1: 52 kDa.

Positive Controls: Daudi + IFN- α cell lysate: sc-2266.

DATA



Kremen-1 (R17-2): sc-74206. Western blot analysis of Kremen-1 expression in IFN- α -treated Daudi whole cell lysate.

STORAGE

Store at 4° C, **DO NOT FREEZE**. Stable for one year from the date of shipment. Non-hazardous. No MSDS required.

RESEARCH USE

For research use only, not for use in diagnostic procedures.

PROTOCOLS

See our web site at www.scbt.com for detailed protocols and support products.