

Bestrophin-2 (D-12): sc-74338

BACKGROUND

Bestrophin-2, also known as BEST2 or VMD2L1 (vitelliform macular dystrophy 2-like protein 1), is a 509 amino acid member of the bestrophin family of proteins. Members of the bestrophin family are transmembrane proteins that contain a high percentage of aromatic residues, a conserved RFP (Arg-Phe-Pro) motif and they function as anion channels. Bestrophin-2 forms a calcium-sensitive chloride channel located within the cell membrane. It is also believed that Bestrophin-2 channels may also conduct other physiological anions such as bicarbonate. Bestrophin-2 is mainly expressed in retinal pigment epithelium and colon.

CHROMOSOMAL LOCATION

Genetic locus: BEST2 (human) mapping to 19p13.2; Best2 (mouse) mapping to 8 C3.

SOURCE

Bestrophin-2 (D-12) is an affinity purified goat polyclonal antibody raised against a peptide mapping within an extracellular domain of Bestrophin-2 of human origin.

PRODUCT

Each vial contains 200 µg IgG in 1.0 ml of PBS with < 0.1% sodium azide and 0.1% gelatin.

Blocking peptide available for competition studies, sc-74338 P, (100 µg peptide in 0.5 ml PBS containing < 0.1% sodium azide and 0.2% BSA).

STORAGE

Store at 4° C, ****DO NOT FREEZE****. Stable for one year from the date of shipment. Non-hazardous. No MSDS required.

APPLICATIONS

Bestrophin-2 (D-12) is recommended for detection of Bestrophin-2 of mouse, rat and human origin by Western Blotting (starting dilution 1:200, dilution range 1:100-1:1000), immunoprecipitation [1-2 µg per 100-500 µg of total protein (1 ml of cell lysate)], immunofluorescence (starting dilution 1:50, dilution range 1:50-1:500) and solid phase ELISA (starting dilution 1:30, dilution range 1:30-1:3000).

Bestrophin-2 (D-12) is also recommended for detection of Bestrophin-2 in additional species, including equine, bovine and porcine.

Suitable for use as control antibody for Bestrophin-2 siRNA (h): sc-72639, Bestrophin-2 siRNA (m): sc-72640, Bestrophin-2 shRNA Plasmid (h): sc-72639-SH, Bestrophin-2 shRNA Plasmid (m): sc-72640-SH, Bestrophin-2 shRNA (h) Lentiviral Particles: sc-72639-V and Bestrophin-2 shRNA (m) Lentiviral Particles: sc-72640-V.

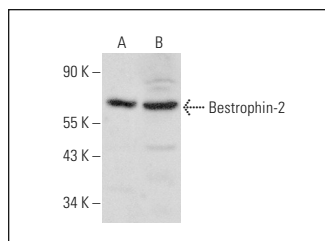
Molecular Weight of Bestrophin-2: 57 kDa.

Positive Controls: MDA-MB-231 cell lysate: sc-2232 or NIH/3T3 whole cell lysate: sc-2210.

RECOMMENDED SECONDARY REAGENTS

To ensure optimal results, the following support (secondary) reagents are recommended: 1) Western Blotting: use donkey anti-goat IgG-HRP: sc-2020 (dilution range: 1:2000-1:100,000) or Cruz Marker™ compatible donkey anti-goat IgG-HRP: sc-2033 (dilution range: 1:2000-1:5000), Cruz Marker™ Molecular Weight Standards: sc-2035, TBS Blotto A Blocking Reagent: sc-2333 and Western Blotting Luminol Reagent: sc-2048. 2) Immunoprecipitation: use Protein A/G PLUS-Agarose: sc-2003 (0.5 ml agarose/2.0 ml). 3) Immunofluorescence: use donkey anti-goat IgG-FITC: sc-2024 (dilution range: 1:100-1:400) or donkey anti-goat IgG-TR: sc-2783 (dilution range: 1:100-1:400) with UltraCruz™ Mounting Medium: sc-24941.

DATA



Bestrophin-2 (D-12): sc-74338. Western blot analysis of Bestrophin-2 expression in MDA-MB-231 (A) and NIH/3T3 (B) whole cell lysates.

RESEARCH USE

For research use only, not for use in diagnostic procedures.

PROTOCOLS

See our web site at www.scbt.com or our catalog for detailed protocols and support products.

MONOS
Satisfaction
Guaranteed

Try **Bestrophin-2 (D-7): sc-376351** or **Bestrophin-2 (B-5): sc-376660**, our highly recommended monoclonal alternatives to Bestrophin-2 (D-12).